

INDUSTRIAL WINCH

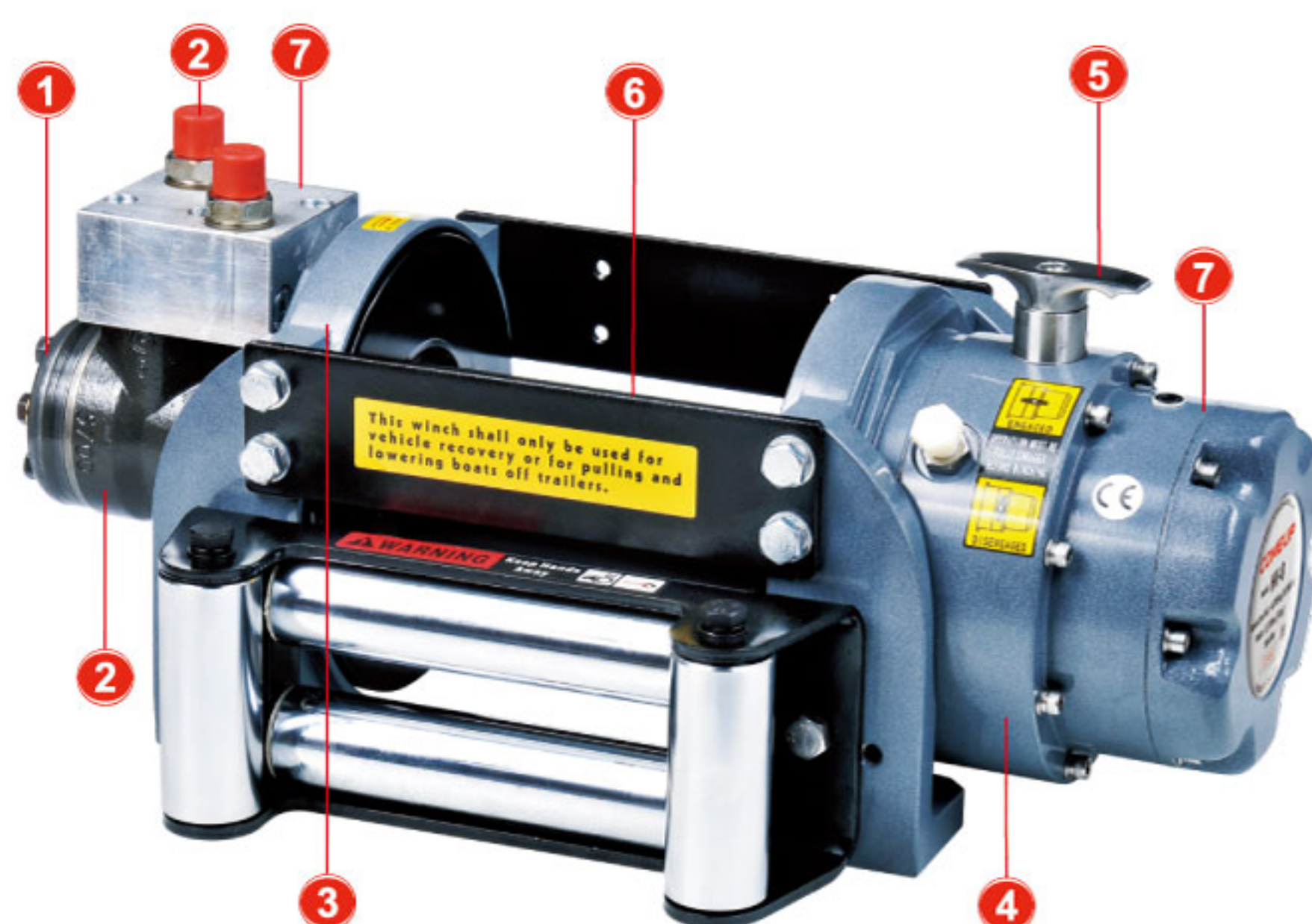
As a professional winch manufacturer, COMEUP provides different models of hydraulic or electric recovery winches and heavy duty hoists for industrial applications. COMEUP Industrial Winches comes with the supreme power and reliability to handle the most demanding situations, including both military and commercial industries. A greater D/d ratio (drum diameter/wire rope) allows for heavy duty applications on car transporters, wreckers, tractors, Lorries and fire / rescue vehicles. COMEUP industrial winches meet international standards such as SAE J706, CE Machinery Directive 2006/42/EC, and REMSA and compliant with EN 14492-1 requirements. It wins the clients' trust and appreciation through reliable quality, state-of-the-art process and innovation.

▴ HYDRAULIC RECOVERY WINCH

▴ ELECTRIC RECOVERY WINCH

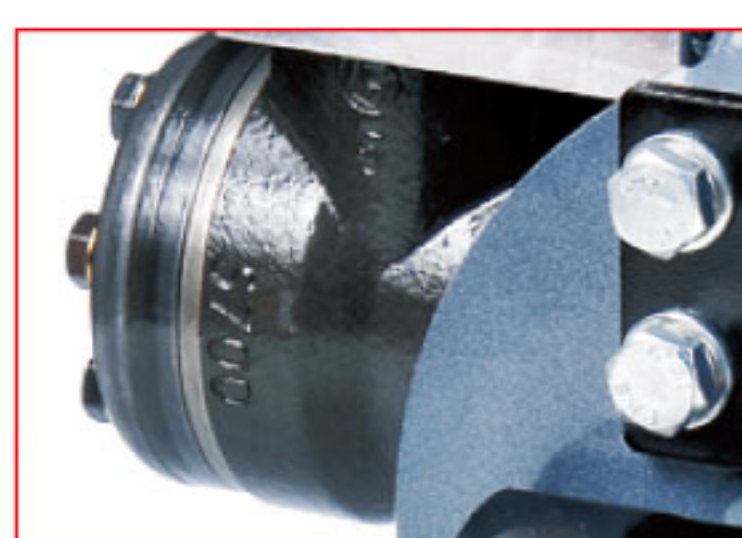
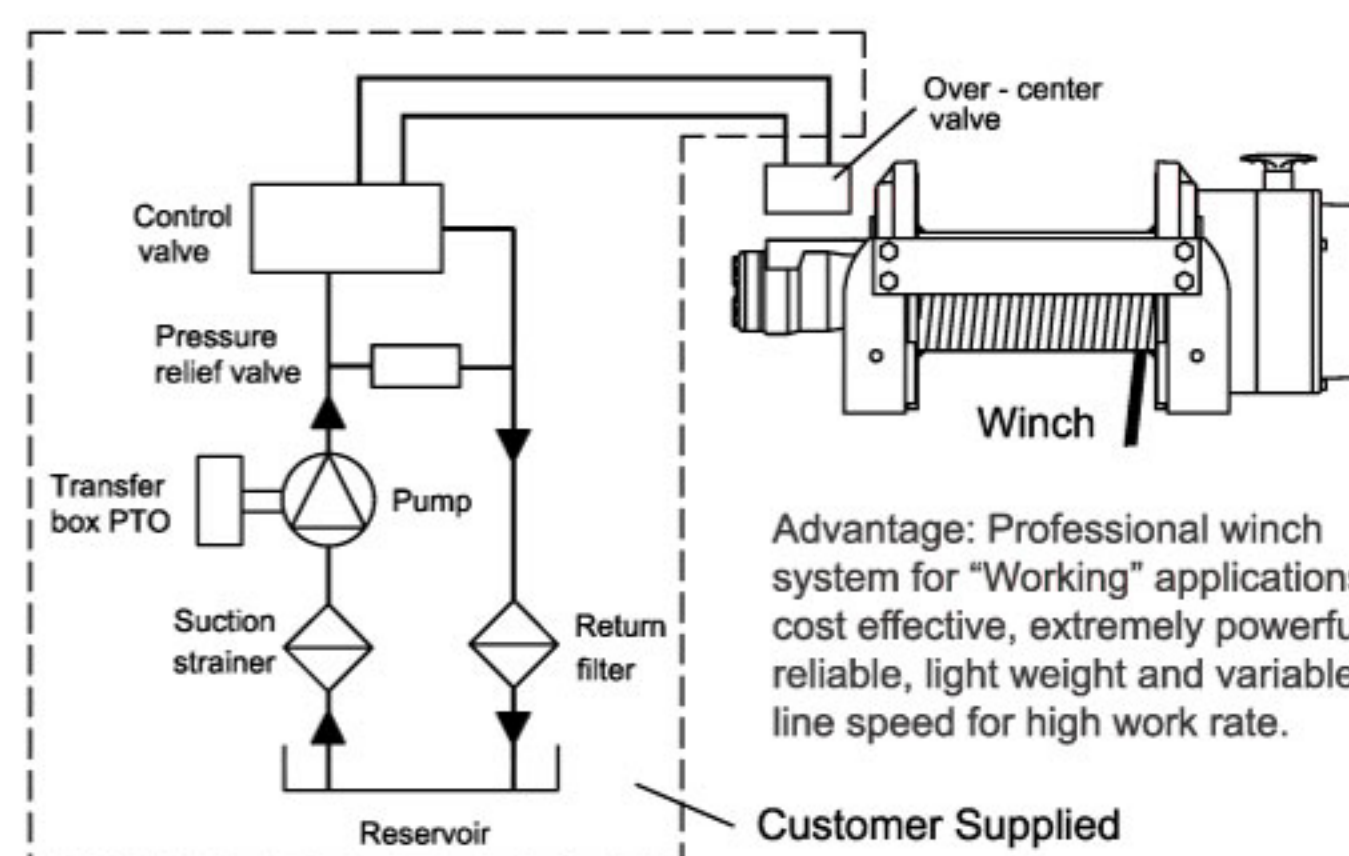
▴ HEAVY DUTY HOIST



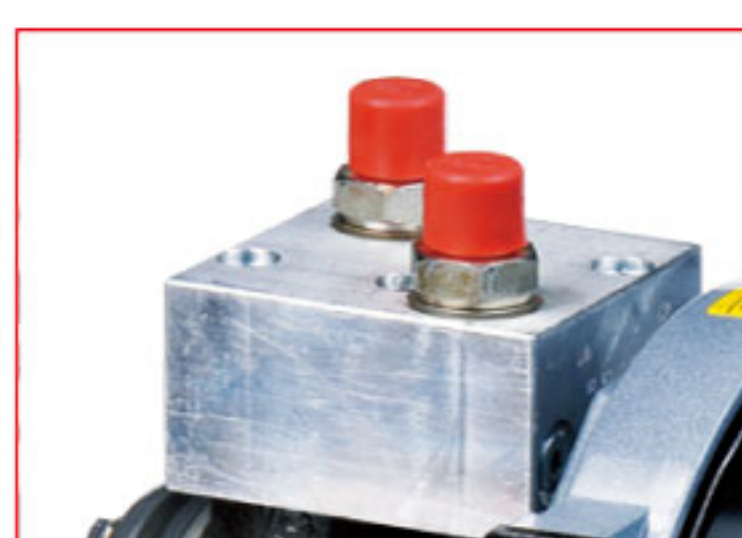


Hydraulic System Installation

(Powered by a PTO / power take off unit driven pump)



- 1. Extreme motor**
Highly efficient and constant operating torque output



- 2. Powered by a PTO device**
Adjustable oil flow and pressure allow variable line pull and speed



- 3. Outstanding and elegant design**
Aluminum die cast housings with steel drum



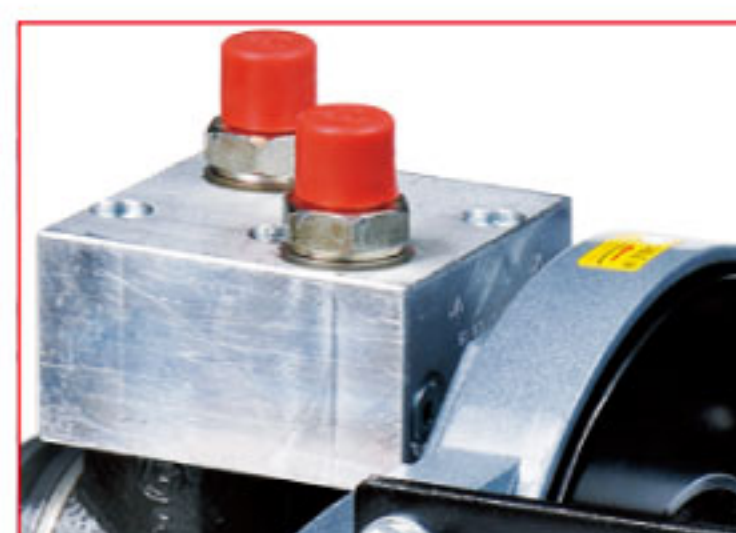
- 4. 2-stage planetary gear train**
Less gear reduction ratio for maximum rated line speed



- 5. Turn clutch by ergonomic T-handle for rapid rope payout**
Easy to turn the T-handle for rapid wire rope payout and workable for left or right side location



- 6. EN 14492-1 supported**
10:1 D/d ratio and 2:1 wire rope strength allow for severe duty car and commercial recovery. (Wire rope is sold separately)



- 7. Doubled failsafe brakes**
Mechanical drag brake and over-center valve providing full 100% braking



HYDRAULIC RECOVERY WINCH

Powered by a PTO (power take off) unit driven pump, COMEUP Hydraulic Recovery Winches feature a professional hydraulic system for "Working" applications at cost effective, extremely powerful, reliable, light weight and variable line speed for high work rate. They come with a drag brake and over-center valve providing complete braking without slip. The efficient and constant operating high torque motor supports professional applications in tough situations. All COMEUP hydraulic recovery winches are for a particular application such as rescuing and recovering vehicles, cargo trucks, vehicle recovery and many other commercial vehicles.

Summary:

- Powered by a PTO/power take off unit driven pump
- Fast and variable recovery speeds for high work rate
- Efficient and constant operating high torque motor
- 2 stage planetary gear train for greater pulling force
- Turn clutch by ergonomic T-handle for rapid wire rope payout
- Drag brake and over-center valve providing complete braking
- EN 14492-1 supported: 10:1 D/d ratio and 2:1 wire rope strength allow severe duty vehicles and commercial recovery
- Meet SAE J706, CE Machinery Directive 2006/42/EC, REMSA Standards and support EN 14492-1.



HV-8 3.6 Tonnes Hydraulic Recovery Winch

- Rated Line Pull: **3,630 kg / 8,000 lb (SAE J706 rating)**
3,560 kg (EN 14492-1 rating)
- Part Number: **PN 680816** Std. drum
PN 681091 Long drum
PN 681123 Std. drum (Clutch in left side)
PN 681347 Long drum (Clutch in left side)
- Meet SAE J706, CE Machinery Directive 2006/42/EC, and REMSA Standards & EN 14492-1 supported

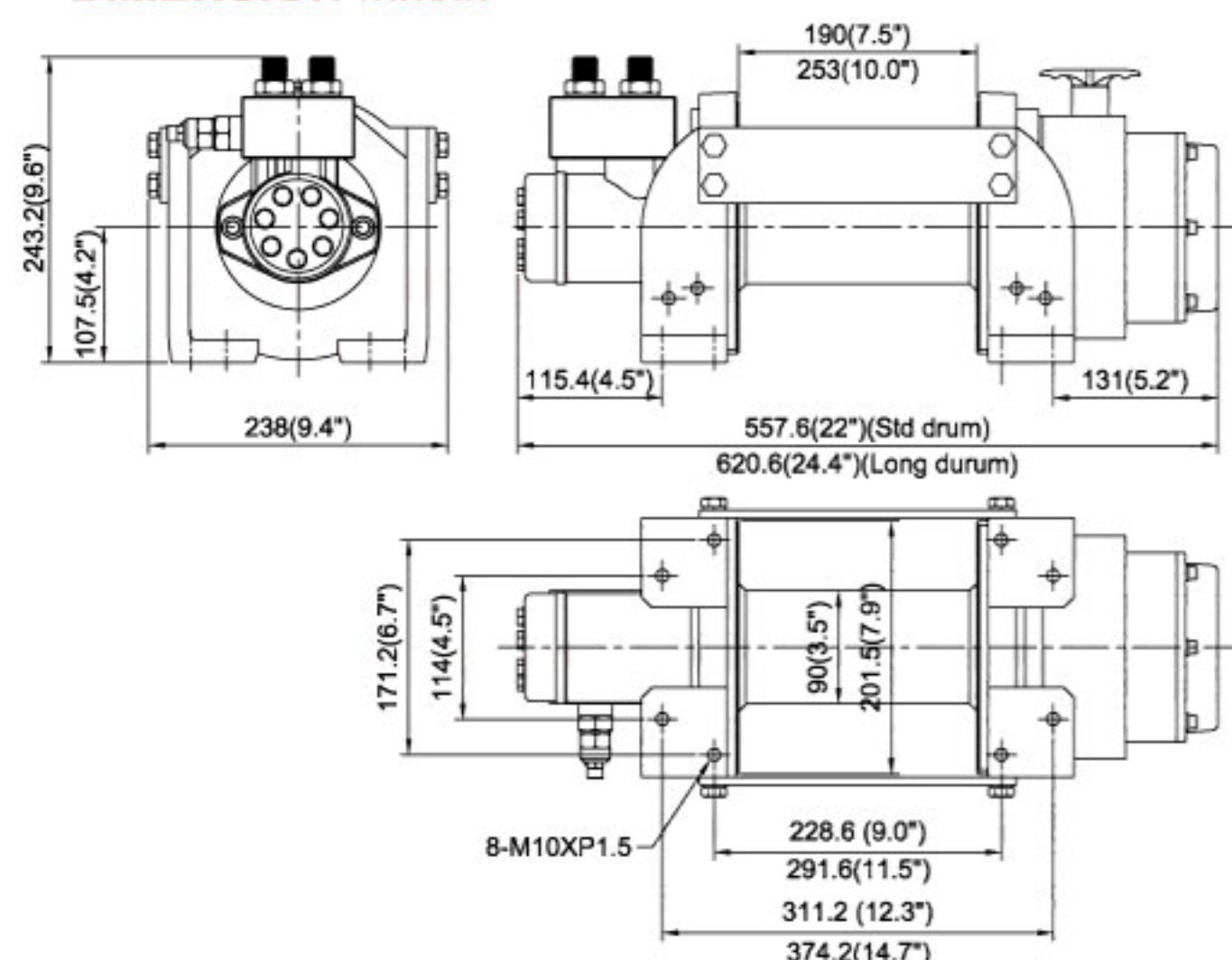
SPECIFICATIONS

Model Number		HV-8
Rated line pull (1 st layer)	SAE J706 rating	3,630 kg / 8,000 lb
	EN 14492-1 rating	3,560 kg
Line speed at 60lt/min (1 st layer)	mpm	15
	fpm	49
Operation pressure		150 bar / 2,175 psi
Max oil flow		60 l / min (15.9 g / min)
Hydraulic motor		77.8 cm ³ / rev (4.7 in ³ / rev)
Gear train		2 stage planetary gears
Gear ratio		16:1
Winch construction		Aluminum die cast housings with steel drum
Clutch (freespooling)		Rotating ring gear
Brake		Spring applied drag brake together with over-center valve supplied
Rotation of winch		Wire rope shall be under-wound orientation only
Drum size (mm x mm)	Std Drum	90 x 190 (3.5" x 7.5")
	Long Drum	90 x 253 (3.5" x 10")
Mounting bolts pattern (mm x mm)	Std Drum	228.6 x 171.2 (9.0" x 6.7")
		311.2 x 114 (12.3" x 4.5")
	Long Drum	291.6 x 171.2 (11.5" x 6.7")
		374.2 x 114 (14.7" x 4.5")
Wire rope recommended	Grade	1,960 N/mm ²
	Diameter (mm)	10 (3/8")
	Capacity (m)	Std Drum 30 (98')
		Long Drum 40 (131')
	Breaking strength (KN)	69.8
Winch weight	Std Drum	35.5 kg / 78.1 lb
	Long Drum	37.5 kg / 82.7 lb
Gross weight	Std Drum	43.3 kg / 95.3 lb
	Long Drum	45.3 kg / 99.9 lb
Box dimension, mm (L x D x H)	Std Drum	600 x 370 x 285 (23.6" x 14.6" x 11.2")
	Long Drum	665 x 370 x 285 (26.2" x 14.6" x 11.2")

PERFORMANCE DATA Line Pull and Rope Capacity

Layer of Wire Rope	Pull by Layer kg / lb	Line Speed at 60 l / min (15.9 g / min), mpm / fpm	Total Rope on the Drum m/ft (Std drum)	(Long drum)
1 st	3,630 / 8,000	15.0 / 49.0	5.8 / 19.0	7.8 / 25.6
2 nd	3,025 / 6,669	18.2 / 59.7	12.8 / 42.0	17.1 / 56.1
3 rd	2,593 / 5,717	21.2 / 69.6	20.9 / 68.6	28.0 / 91.9
4 th	2,269 / 5,002	24.2 / 79.4	30 / 98	40 / 131

DIMENSION mm/in



HV-10 4.5 Tonnes Hydraulic Recovery Winch

- Rated Line Pull: **4,535 kg / 10,000 lb (SAE J706 rating)**
4,300 kg (EN 14492-1 rating)
- Part Number: **PN 682546** Std. drum
PN 683129 Std. drum (Clutch in left side)
- Meet SAE J706, CE Machinery Directive 2006/42/EC, and REMSA Standards & EN 14492-1 supported

SPECIFICATIONS

Model Number		HV-10
Rated line pull (1 st layer)	SAE J706 rating	4,535 kg / 10,000 lb
	EN 14492-1 rating	4,300 kg
Line speed at 60lt/min (1 st layer)	mpm	14
	fpm	46
Operation pressure		150 bar / 2,175 psi
Max oil flow		60 l / min (15.9 g / min)
Hydraulic motor		97.3 cm ³ / rev (5.9 in ³ / rev)
Gear train		2 stage planetary gears
Gear ratio		16:1
Winch construction		Aluminum die cast housings with steel drum
Clutch (freespooling)		Rotating ring gear
Brake		Spring applied drag brake together with over-center valve supplied
Rotation of winch		Wire rope shall be under-wound orientation only
Drum size (mm x mm)		102 x 253 (4.0" x 10")
Mounting bolts pattern (mm x mm)		291.6 x 171.2 (11.5" x 6.7") 374.2 x 114 (14.7" x 4.5")
Wire rope recommended	Grade	1,960 N/mm ²
	Diameter (mm)	11 (7/16")
	Capacity (m)	27 (89')
	Breaking strength (KN)	84.4
Winch weight		37 kg / 81.4 lb
Gross weight		46.6 kg / 102.5 lb
Box dimension, mm (L x D x H)		665 x 370 x 285 (26.2" x 14.6" x 11.2")

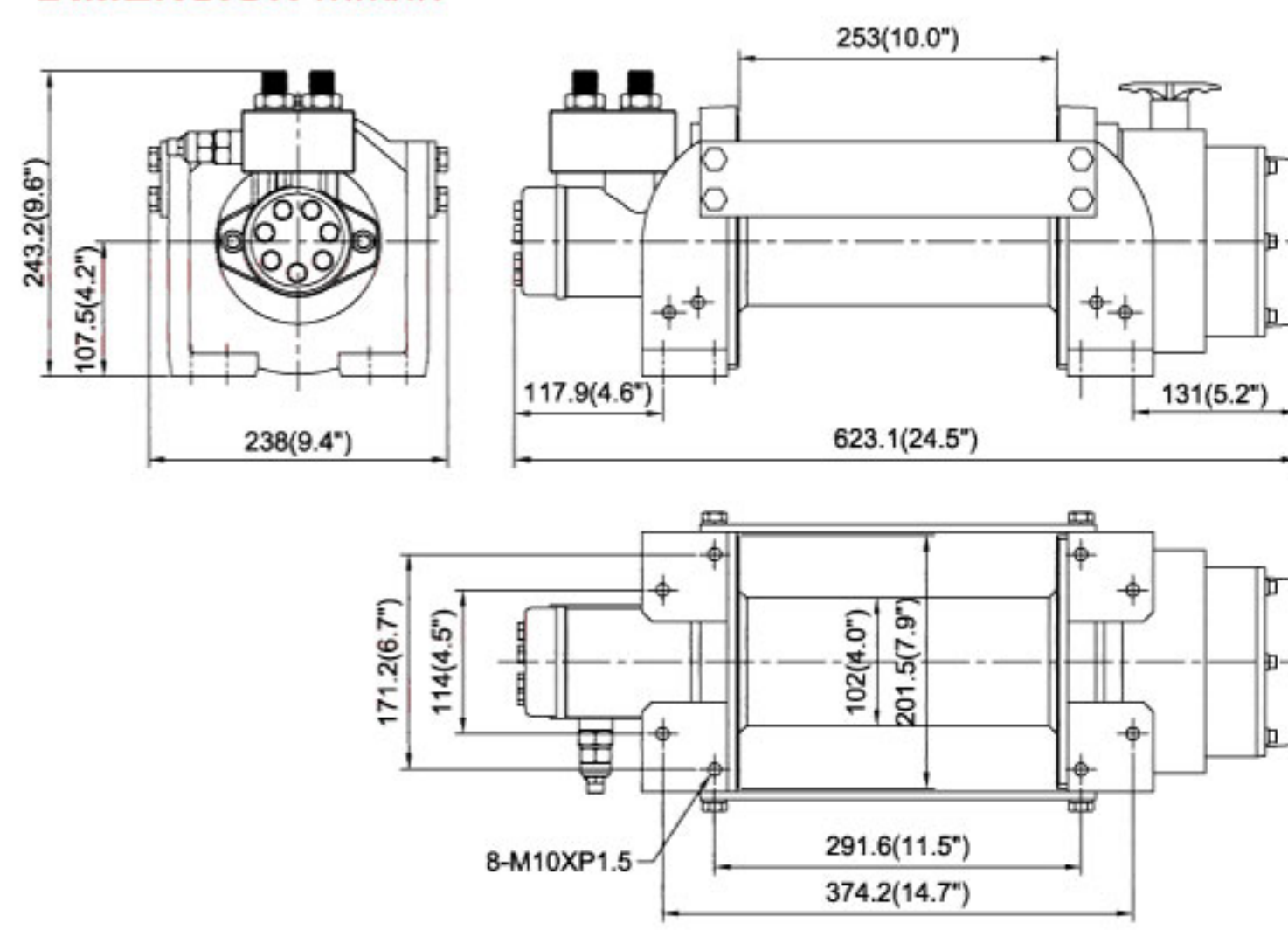
Compliant with EN 14492-1 requirements for vehicle recovery winch:

- The working coefficient for the first rope layer on the drum shall be at least 2.
- The D/d ratio to the center of the rope shall be at least 10 for the drum.

PERFORMANCE DATA Line Pull and Rope Capacity

Layer of Wire Rope	Pull by Layer kg / lb	Line Speed at 60 l / min (15.9 g / min), mpm / fpm	Total Rope on the Drum m/ft
1 st	4,535 / 10,000	14.0 / 46.0	8.0 / 26.2
2 nd	3,796 / 8,369	16.3 / 53.5	17.5 / 57.4
3 rd	3,264 / 7,196	19.0 / 62.3	27.0 / 89.0

DIMENSION mm/in





HV-12 5.4 Tonnes Hydraulic Recovery Winch

- Rated Line Pull: **5,440 kg / 12,000 lb (SAE J706 rating)**
5,100 kg (EN 14492-1 rating)
- Part Number: **PN 684311** Std. drum
PN 685433 Std. drum (Clutch in left side)
- Meet SAE J706, CE Machinery Directive 2006/42/EC, and REMSA Standards & EN 14492-1 supported

HV-15 6.8 Tonnes Hydraulic Recovery Winch

- Rated Line Pull: **6,800 kg / 15,000 lb**
(EN 14492-1 & SAE J706 rating)
- Part Number: **PN 686732** Std. drum
PN 687548 Std. drum (Clutch in left side)
- Meet SAE J706, CE Machinery Directive 2006/42/EC, and REMSA Standards & EN 14492-1 supported

SPECIFICATIONS

Model Number		HV-12	HV-15
Rated line pull (1 st layer)	SAE J706 rating	5,440 kg / 12,000 lb	6,800 kg / 15,000 lb
	EN 14492-1 rating	5,100 kg	6,800 kg
Line speed at 60lt/min (1 st layer)	mpm	10	9
	fpm	33	30
Operation pressure		150 bar / 2,175 psi	
Max oil flow		60 l / min (15.9 g / min)	
Hydraulic motor		125 cm ³ / rev (7.6 in ³ / rev)	156 cm ³ / rev (9.5 in ³ / rev)
Gear train		2 stage planetary gears	
Gear ratio		19.4:1	
Winch construction		Aluminum die cast housings with steel drum	
Clutch (freespooling)		Rotating ring gear	
Brake		Spring applied drag brake together with over-center valve supplied	
Rotation of winch		Wire rope shall be under-wound orientation only	
Drum size (mm x mm)		114 x 255 (4.5" x 10.0")	127 x 255 (5.0" x 10.0")
Mounting bolts pattern (mm x mm)		303.5 x 114 (12.0" x 4.5")	
		368.5 x 171.2 (14.5" x 6.7")	
Wire rope recommended	Grade	1,960 N/mm ²	
	Diameter (mm)	12 (1/2")	14 (9/16")
	Capacity (m)	39 (128')	27 (89')
	Breaking strength (KN)	100.5	137
Winch weight		71 kg / 156.5 lb	72 kg / 158.7 lb
Gross weight		87 kg / 191.8 lb	88 kg / 194 lb
Box dimension, mm (L x D x H)		715 x 415 x 311 (28.1" x 16.3" x 12.2")	

Compliant with EN 14492-1 requirements for vehicle recovery winch:

- The working coefficient for the first rope layer on the drum shall be at least 2.
- The D/d ratio to the center of the rope shall be at least 10 for the drum.

PERFORMANCE DATA Line Pull and Rope Capacity

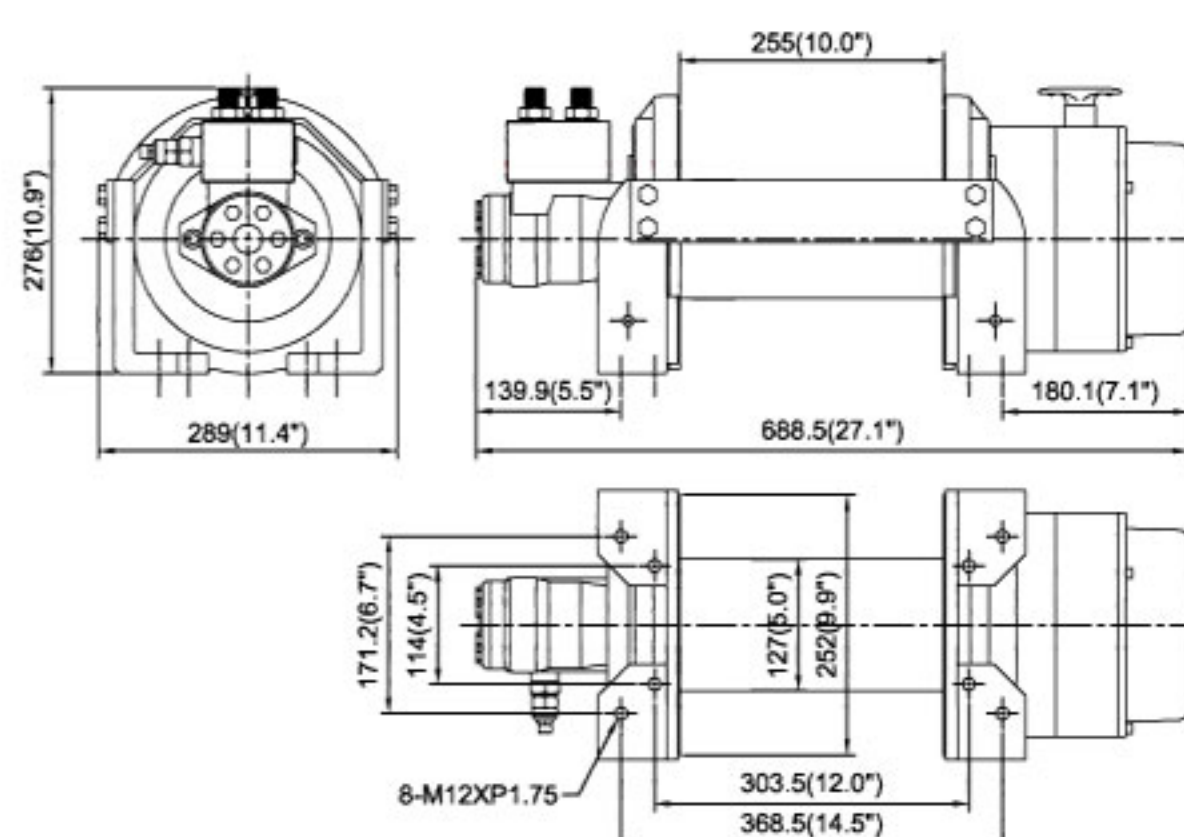
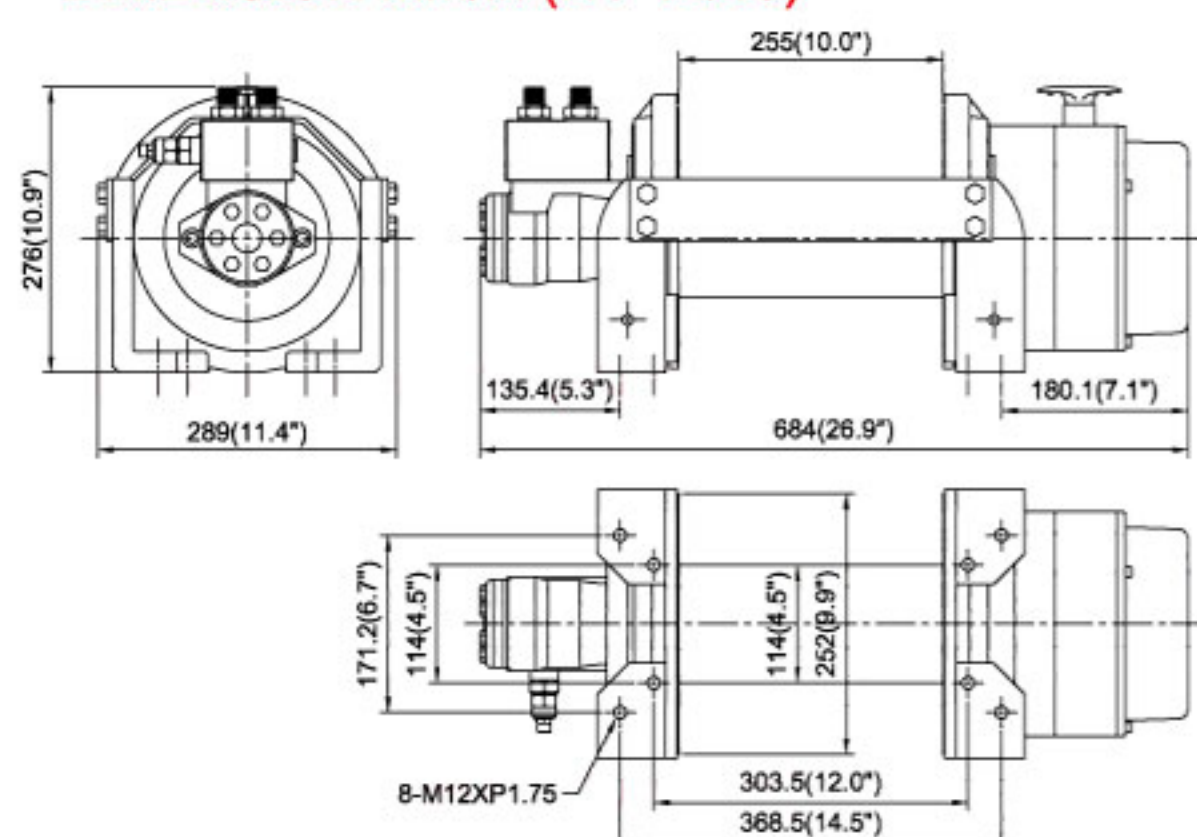
HV-12

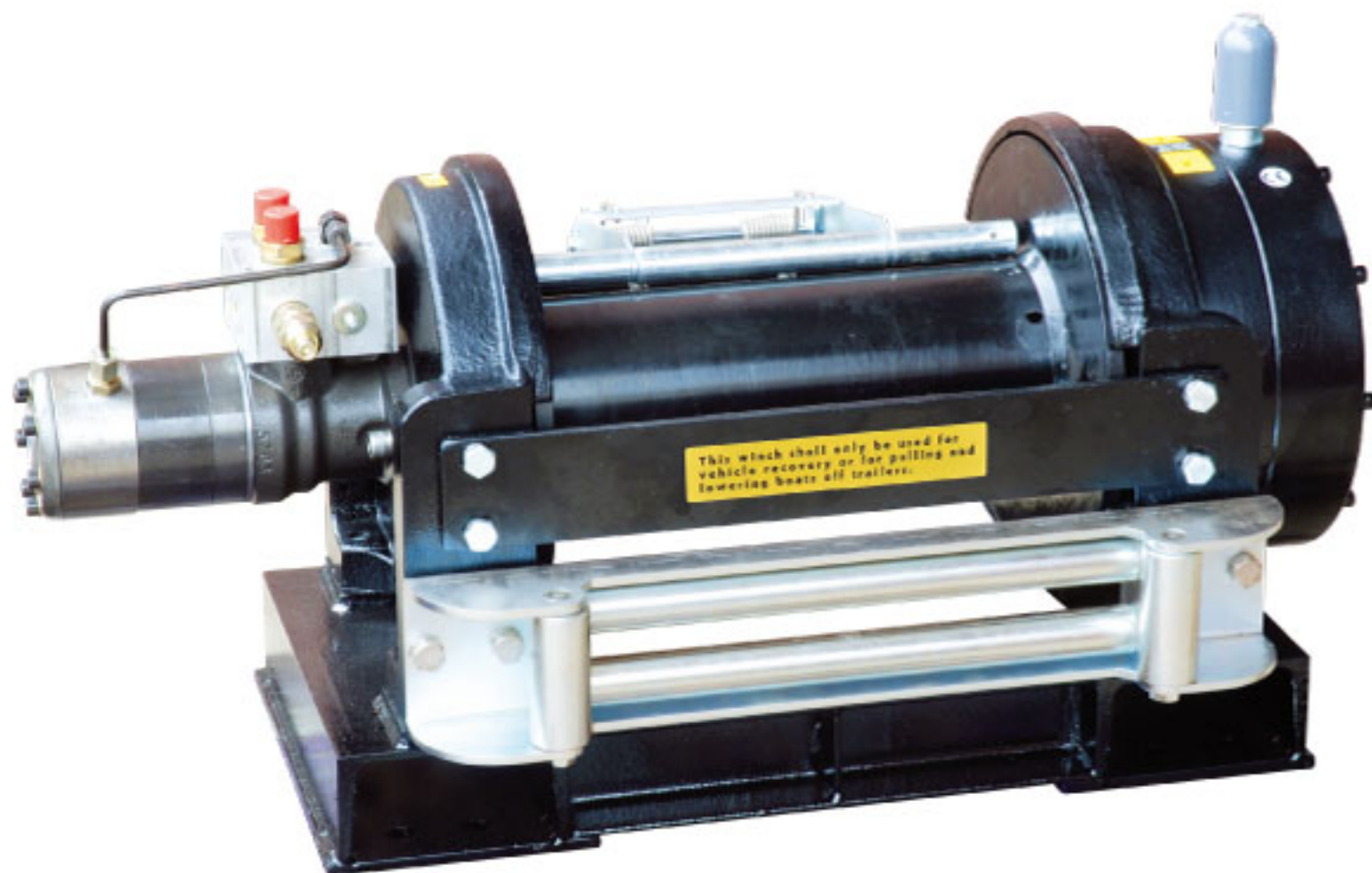
Layer of Wire Rope	Pull by Layer kg / lb	Line Speed at 60 l / min (15.9 g / min), mpm / fpm	Total Rope on the Drum m/ft
1 st	5,440 / 12,000	10.0 / 33.0	8.2 / 26.9
2 nd	4,570 / 10,075	11.6 / 38.1	18.0 / 59.1
3 rd	3,939 / 8,684	13.5 / 44.3	29.3 / 96.1
4 th	3,462 / 7,632	15.4 / 50.5	39.0 / 128.0

HV-15

Layer of Wire Rope	Pull by Layer kg / lb	Line Speed at 60 l / min (15.9 g / min), mpm / fpm	Total Rope on the Drum m/ft
1 st	6,800 / 15,000	9.0 / 30.0	7.8 / 25.6
2 nd	5,673 / 12,507	10.5 / 34.4	17.3 / 56.8
3 rd	4,867 / 10,730	12.3 / 40.4	27.0 / 89.0

DIMENSION mm/in (HV-12/15)





HV-20000 Hydraulic Recovery Winch

- Rated Line Pull: **9,070 kg / 20,000 lb** (SAE J706 rating)
- Part Number: **PN 686541**
- Meet SAE J706, CE Machinery Directive 2006/42/EC



HV-30000 Hydraulic Recovery Winch

- Rated Line Pull: **13,610 kg / 30,000 lb** (SAE J706 rating)
- Part Number: **PN 686811**
- Meet SAE J706, CE Machinery Directive 2006/42/EC

SPECIFICATIONS

Model Number		HV-20000	HV-30000
Rated line pull (1 st layer)		9,070 kg / 20,000 lb	13,610 kg / 30,000 lb
Line speed at 60lt/min (1 st layer)	mpm	7.2	4.6
	fpm	23.6	15
Operation pressure		175 bar / 2,540 psi	150 bar / 2,175 psi
Max oil flow		60 l / min (15.9 g / min)	
Hydraulic motor		125 cm ³ / rev (7.6 in ³ / rev)	160 cm ³ / rev (9.7 in ³ / rev)
Gear train		2 stage planetary gears	
Gear ratio		32:1	43.1:1
Winch construction		Steel cast housings with steel drum	
Clutch (freespooling)		Rotating ring gear	
Brake		Hydraulic motor with negative brake together with over-center valve supplied	
Rotation of winch		Wire rope shall be under-wound orientation only	
Drum size (mm x mm)		140 x 370 (5.5" x 14.6")	152.5 x 350 (6.0" x 13.8")
Mounting bolts pattern (mm x mm)		470 x 254 (18.5" x 10.0")	457.2 x 355.6 (18.0" x 14.0")
		571.6 x 254 (22.5" x 10.0")	558.8 x 355.6 (22.0" x 14.0")
Wire rope recommended	Grade	1,770 N/mm ² (6 x W(29)+IWRC)	
	Diameter (mm)	14 (9/16")	16 (5/8")
	Capacity (m)	80 (265')	91 (300')
	Breaking strength (KN)	129	169
Winch weight		200 kg / 440 lb	360 kg / 792 lb
Gross weight		230 kg / 506 lb	390 kg / 858 lb
Box dimension, mm (L x D x H)		940 x 500 x 670 (37" x 19.7" x 26.4")	980 x 560 x 750 (38.6" x 22" x 29.5")

PERFORMANCE DATA Line Pull and Rope Capacity

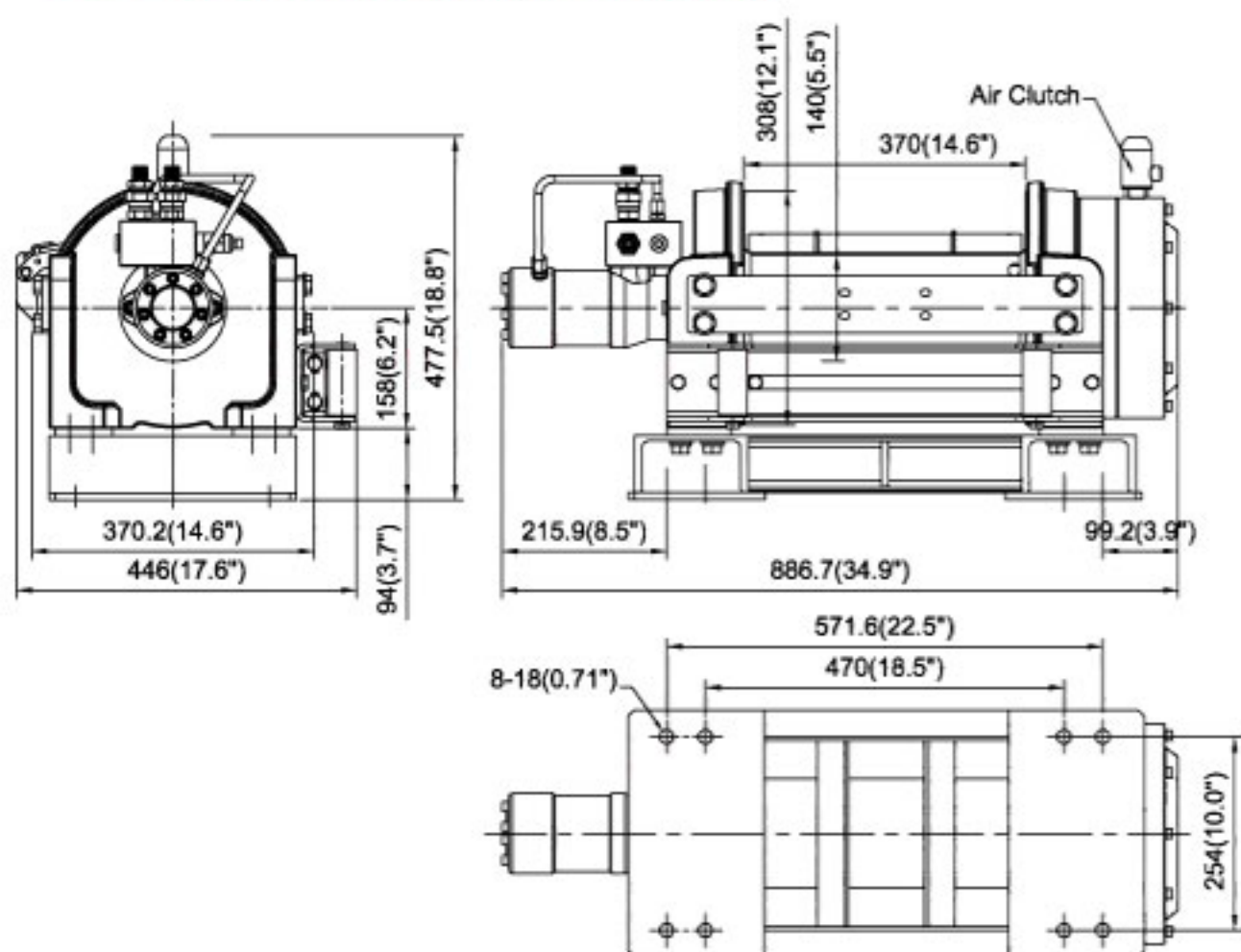
HV-20000

Layer of Wire Rope	Pull by Layer kg / lb	Line Speed at 60 l / min (15.9 g / min), mpm / fpm	Total Rope on the Drum m/ft
1 st	9,070 / 20,000	7.2 / 23.6	12.3 / 40.4
2 nd	7,673 / 16,916	8.5 / 27.9	26.8 / 87.9
3 rd	6,649 / 14,659	9.8 / 32.2	43.6 / 143.0
4 th	5,866 / 12,932	11.1 / 36.4	62.6 / 205.4
5 th	5,248 / 11,570	12.4 / 40.7	80.0 / 265.0

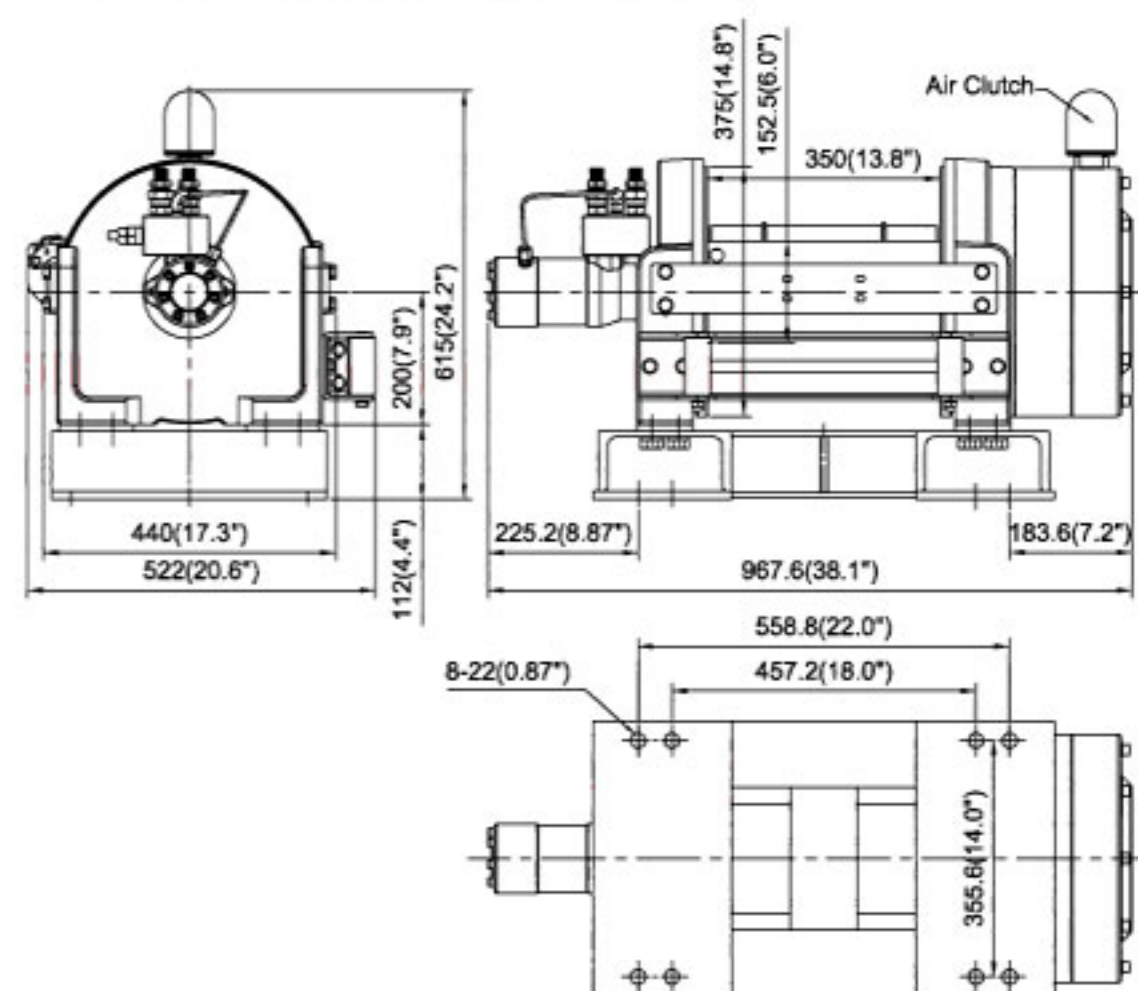
HV-30000

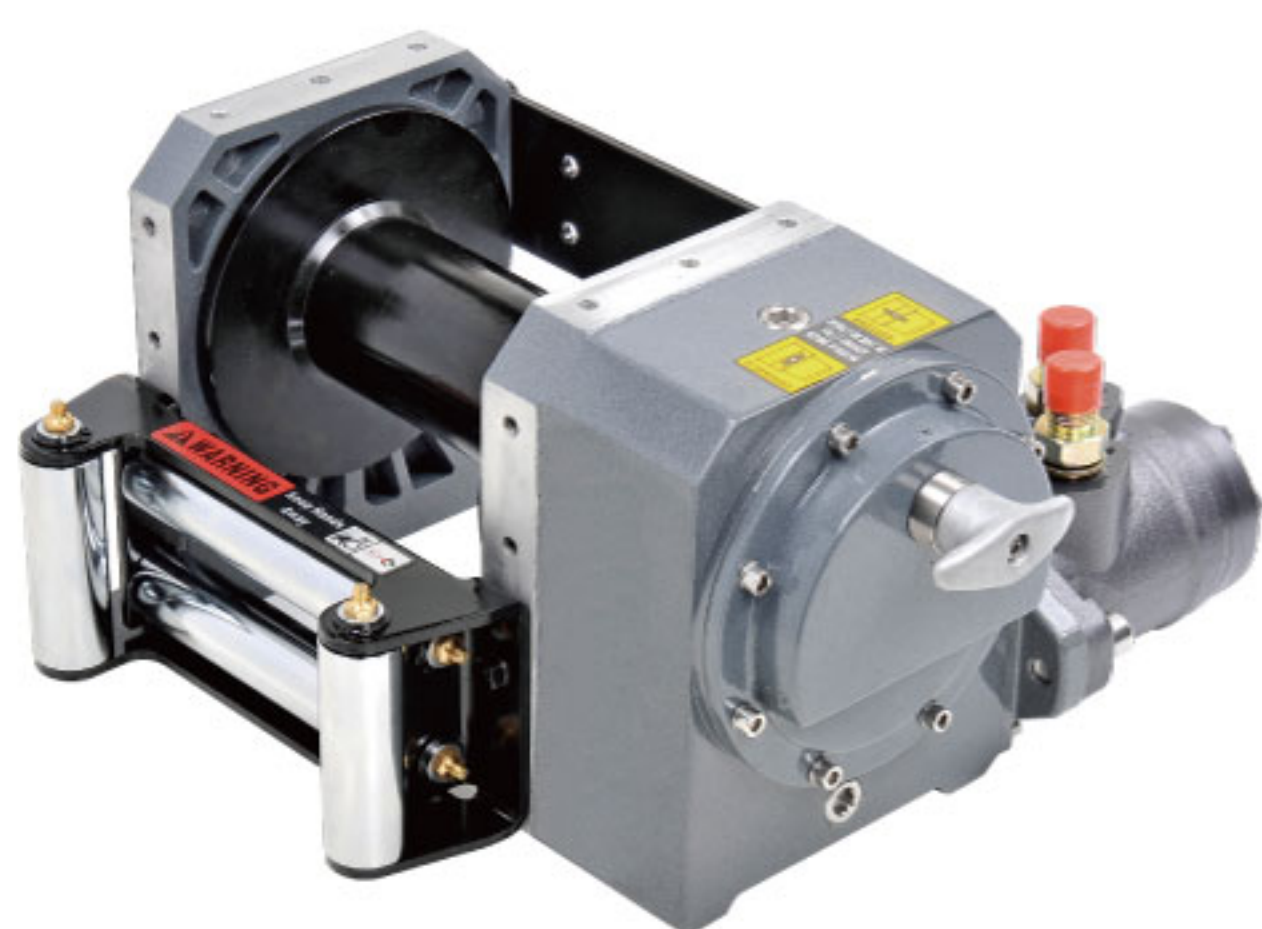
Layer of Wire Rope	Pull by Layer kg / lb	Line Speed at 60 l / min (15.9 g / min), mpm / fpm	Total Rope on the Drum m/ft
1 st	13,610 / 30,000	4.6 / 15.0	11.1 / 36.4
2 nd	11,438 / 25,261	5.5 / 18.0	24.2 / 79.4
3 rd	9,864 / 21,746	6.4 / 21.0	39.4 / 129.3
4 th	8,670 / 19,114	7.3 / 24.0	56.8 / 186.4
5 th	7,735 / 17,053	8.1 / 26.6	76.2 / 250.0
6 th	6,981 / 15,390	9.0 / 29.5	91.0 / 300.0

DIMENSION mm/in (HV-20000)



DIMENSION mm/in (HV-30000)





Yak 5 Hydraulic Worm Gear Winch

- Rate Line Pull: **2,268 kg / 5,000 lb (SAE J706 Rating)**
2,200 kg (EN 14492-1 rating)
- Part Number: **PN 681330** Std. drum
PN 681350 Long drum
- Meet SAE J706, CE Machinery Directive 2006/42/EC, and REMSA Standards & EN 14492-1 supported

Yak 7 Hydraulic Worm Gear Winch

- Rate Line Pull: **3,175 kg / 7,000 lb (SAE J706 Rating)**
3,200 kg (EN 14492-1 rating)
- Part Number: **PN 681260** Std. drum
PN 681266 Long drum
- Meet SAE J706, CE Machinery Directive 2006/42/EC, and REMSA Standards & EN 14492-1 supported

SPECIFICATIONS

Model Number		Yak 5	Yak 7
Rated line pull (1 st layer)	SAE J706 rating	2,268 kg / 5,000 lb	3,175 kg / 7,000 lb
	EN 14492-1 rating	2,200 kg	3,200 kg
Line speed (1 st layer)	mpm	4.4 at 45 l / min	5.2 at 40 l / min
	fpm	14.4 at 11.9 g / min	17.1 at 10.6 g / min
Operation pressure		60 bar / 870 psi	110 bar / 1,595 psi
Max oil flow		45 l / min (11.9 g / min)	40 l / min (10.6 g / min)
Hydraulic motor		51.7 cm ³ / rev (3.2 in ³ / rev)	48.6 cm ³ / rev (3.0 in ³ / rev)
Gear train		1 stage worm gear	
Gear ratio		50:1	
Winch construction		Aluminum die cast housings with steel drum	
Clutch (freespooling)		Worm gear disengaged	
Brake		Irreversible worm gear	
Rotation of winch		Wire rope shall be under-wound orientation only	
Drum size (mm x mm)	Std. drum	72 x 160 (2.8" x 6.3")	90 x 160 (3.5" x 6.3")
	Long drum	72 x 240 (2.8" x 9.5")	90 x 240 (3.5" x 9.5")
Mounting bolts pattern (mm x mm)	Std. drum	130 x 211 (5.1" x 8.3")	
	Long drum	130 x 291 (5.1" x 11.5")	
Wire rope recommended	Grade	1,960 N/mm ²	
	Diameter (mm)	8 (5/16")	10 (3/8")
	Capacity (m)	Std. drum	40 (131')
		Long drum	60 (197')
	Breaking strength (KN)	44.7	69.8
Winch weight	Std. drum	26 kg / 59.3 lb	29 kg / 63.9 lb
	Long drum	29 kg / 63.9 lb	33 kg / 72.8 lb
Gross weight	Std. drum	30 kg / 66.1 lb	33 kg / 72.8 lb
	Long drum	33 kg / 72.8 lb	37 kg / 81.6 lb
Box dimension, mm (L x D x H)	Std. drum	417 x 386 x 256 (16.4" x 15.2" x 10.1")	
	Long drum	497 x 386 x 256 (19.6" x 15.2" x 10.1")	

Compliant with EN 14492-1 requirements for recovery winches:

- The working coefficient for the first rope layer on the drum shall be at least 2.
- The D/d ratio to the center of the rope shall be at least 10 for the drum.

PERFORMANCE DATA Line Pull and Rope Capacity

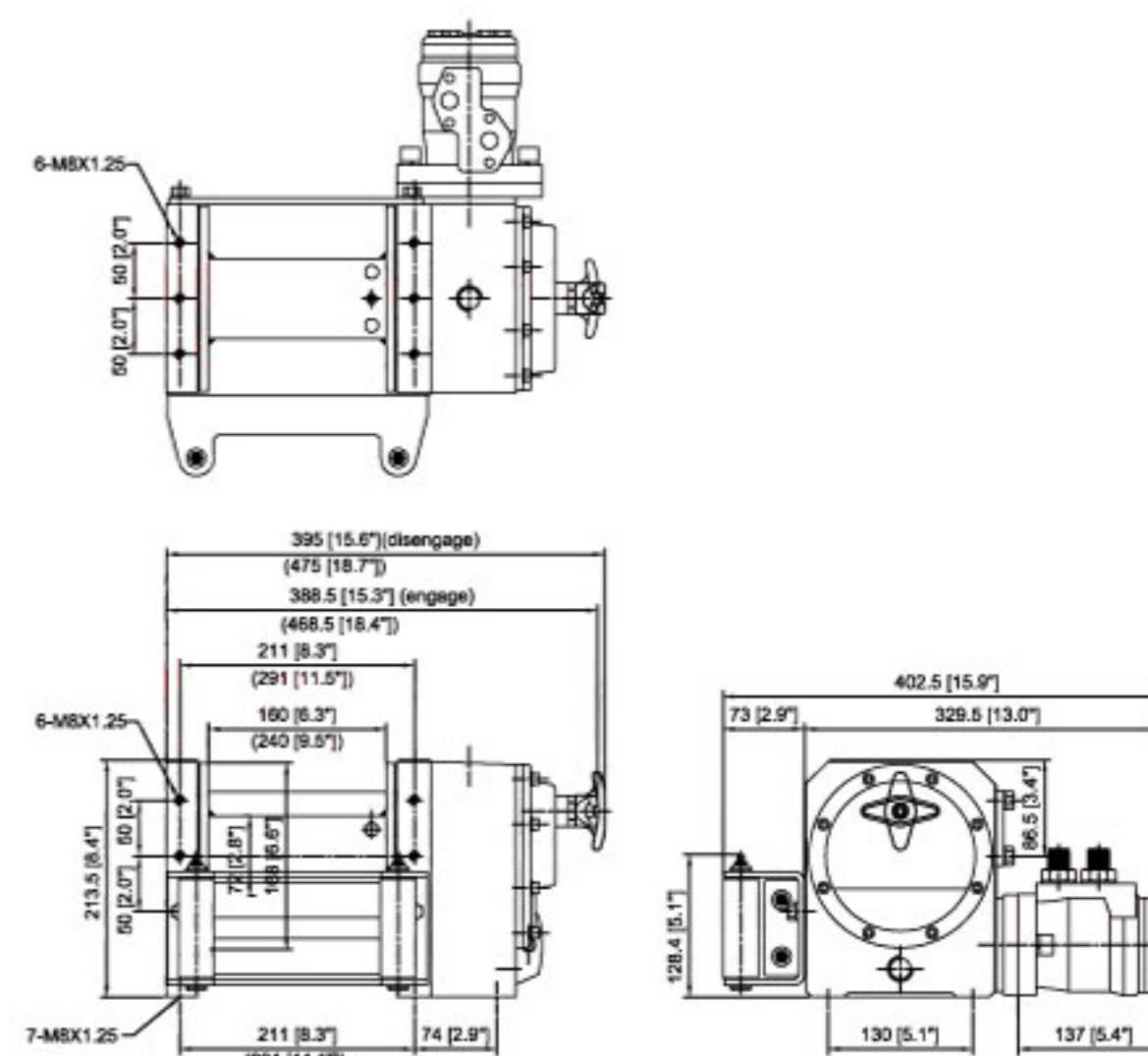
Yak 5

Layer of Wire Rope	Pull by layer kg / lb	Line Speed at 45 l / min (11.9 g / min), mpm / fpm	Total Rope on the Drum m/ft	
			(Std drum)	(Long drum)
1 st	2,268 / 5,000	4.4 / 14.4	4.9 / 16.1	7.4 / 24.3
2 nd	1,890 / 4,167	5.3 / 17.4	10.8 / 35.4	16.3 / 53.5
3 rd	1,620 / 3,571	6.1 / 20.0	17.6 / 57.7	26.7 / 87.6
4 th	1,418 / 3,126	7.0 / 23.0	25.5 / 83.7	38.6 / 126.6
5 th	1,260 / 2,778	7.9 / 25.9	34.3 / 112.5	51.9 / 170.3
6 th	1,134 / 2,500	8.8 / 28.9	40.0 / 131.0	60.0 / 197.0

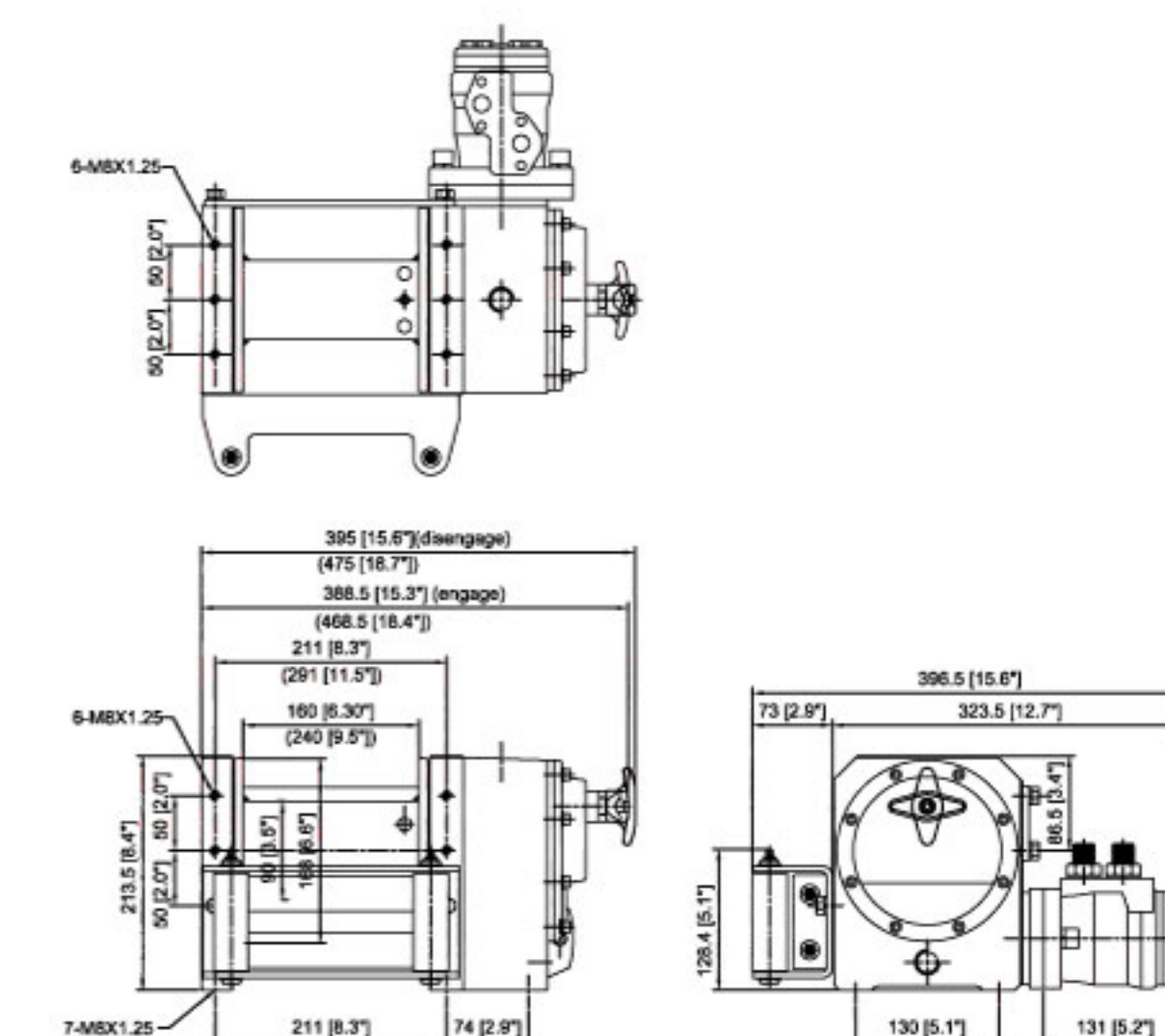
Yak 7

Layer of Wire Rope	Pull by layer kg / lb	Line Speed at 40 l / min (10.6 g / min), mpm / fpm	Total Rope on the Drum m/ft	
			(Std drum)	(Long drum)
1 st	3,175 / 7,000	5.2 / 17.1	4.9 / 16.1	7.4 / 24.3
2 nd	2,646 / 5,833	6.2 / 20.3	10.7 / 35.1	16.2 / 53.1
3 rd	2,268 / 5,000	7.2 / 23.6	17.5 / 57.4	26.6 / 87.3
4 th	1,984 / 4,374	8.3 / 27.2	24.0 / 79.0	35.0 / 115.0

DIMENSION mm/in (Yak 5)



DIMENSION mm/in (Yak 7)



ELECTRIC RECOVERY WINCH

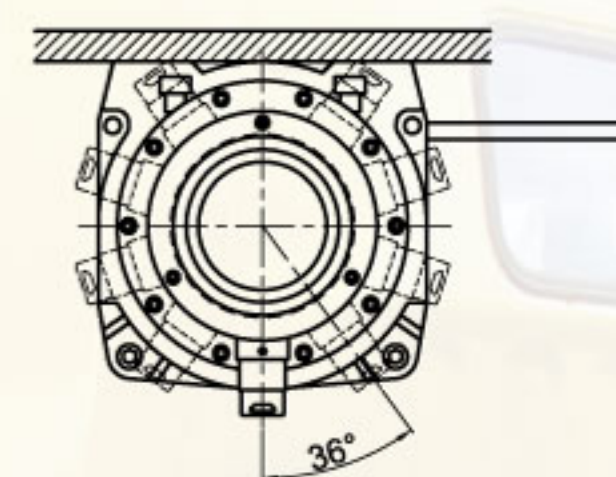
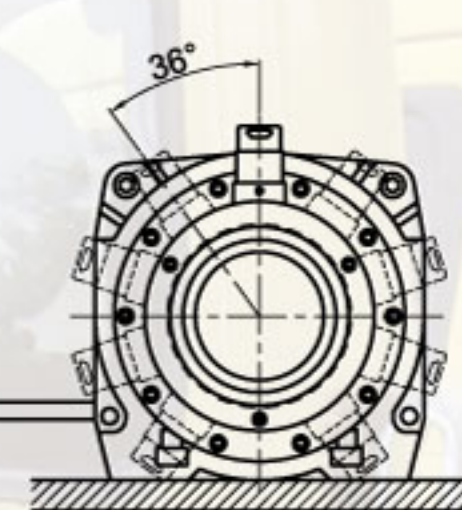
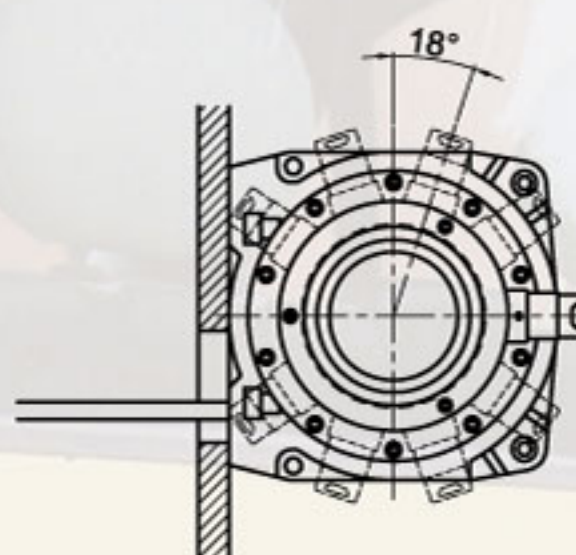
COMEUP

COMEUP new Rhino series is a high performance recovery winch and comes with high efficiency 3-stage planetary gear train, heavy duty series wound motor to give high torque and fast line speed output. Submersible sealed contactor handles high amps and allows higher duty cycle. Plus the over-load protector function that is built-in the control box prevents overloading of the winch. The U.S. Germany, UK. France, etc patented automatic CSB (Cone Brake Structure) performs instant braking without slip. It requires limited maintenance and with ease. The rotating ring gear clutch (Freespooling) is a pull and turn design for rapid wire rope payout. It ensures maximum performance in the toughest environments and is ideal for commercial, industrial and severe duty applications. The 10:1 D/d ratio allows heavy duty applications on car transporter wrecker, tractor, lorry and fire / rescue engine

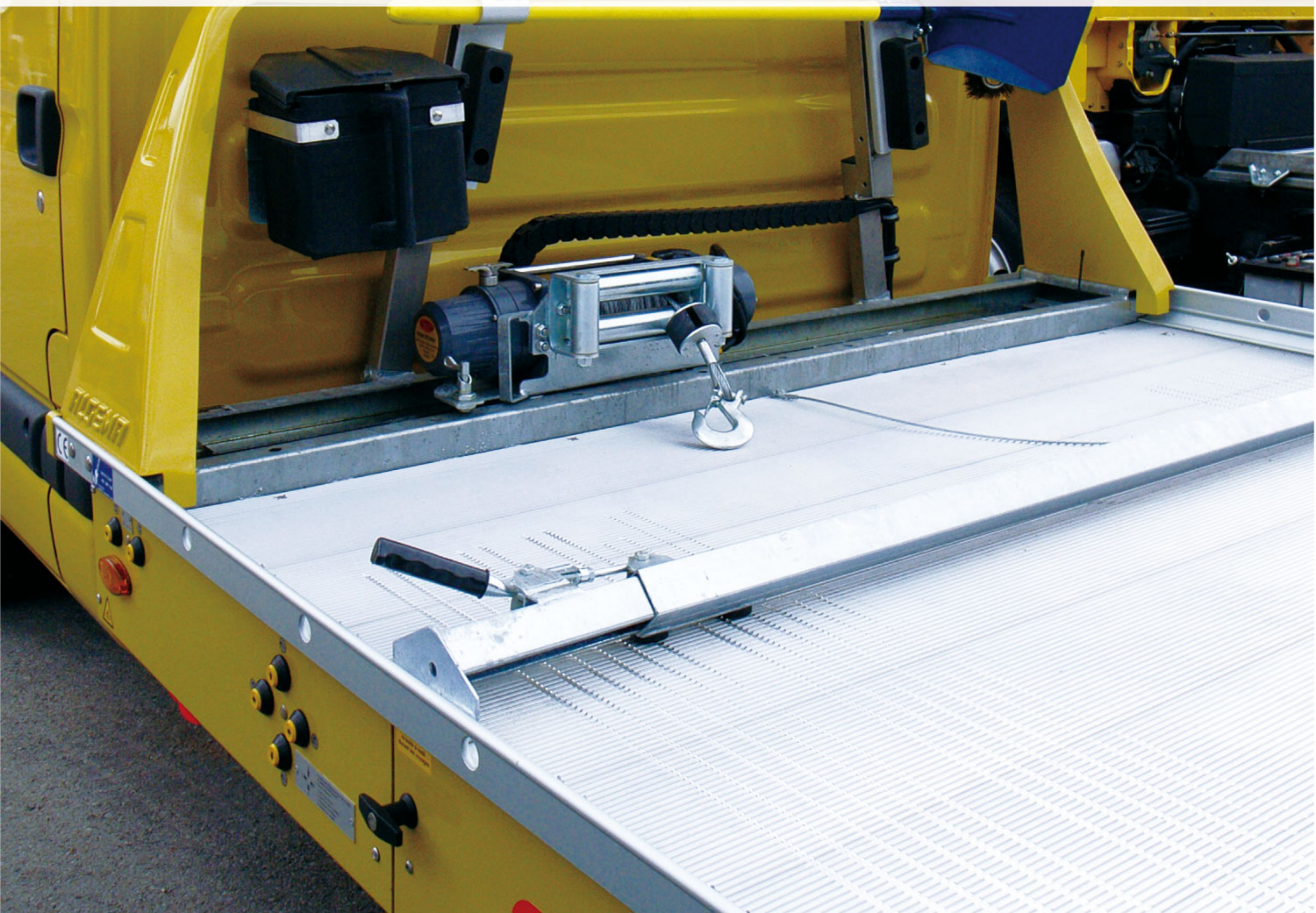
- Reliable electric winch for commercial, industrial and severe duty applications.
- 10 equally positioned pin holes and an ergonomic T-handle make it possible to reposition freespool clutch.
- Over-load protector built-in the control box prevents overloading of the winch.
- Hardened steel, 3-stage planetary gear train provides efficient and reliable operation.
- Water-proof remote control with thermometric LED indicator alerts when the motor is over-heated.
- U.S. Germany, U.K. France, etc patented mechanical cone brake holds the full load without slipping.
- Submersible sealed contactor handles high amps and allows higher duty cycle.
- Meet SAE J706, CE Machinery Directive 2006/42/EC, and EN 14492-1 standards.



► The over-load protector built-in the control box designs to prevent overheating of the winch



► 10 equally positioned pin holes ensure seamless clutch transmission and make it easily rotate by 36° increments





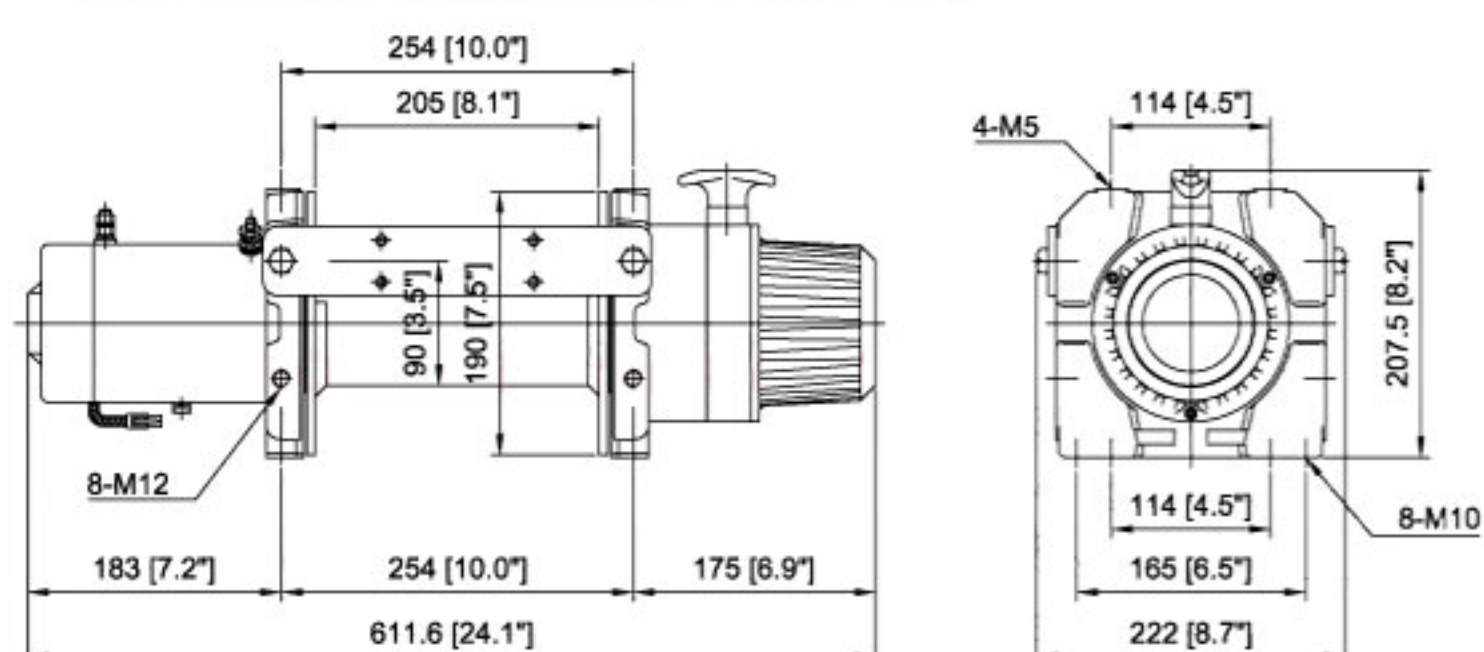
Rhino 8 Electric Recovery Winch

- Rate Line Pull: **3,630 kg / 8,000 lb (SAE J706 rating)**
3,560 kg (EN 14492-1 rating)
- Part Number: **PN 850812** 12V DC motor
PN 850824 24V DC motor
- Meet SAE J706, CE Machinery Directive 2006/42/EC, and REMSA Standards & EN 14492-1 supported

SPECIFICATIONS

Model Number		Rhino 8	Rhino 12
Rated line pull	SAE J706 rating	3,630 kg / 8,000 lb	5,440 kg / 12,000
	EN 14492-1 rating	3,560 kg	5,100 kg
Motor	12V	3,430 w / 4.6 hp	4,180 w / 5.6 hp
	24V	1,940 w / 2.6 hp	2,690 w / 3.6 hp
Gear train 3 stage planetary gears			
Gear ratio		211:1	315:1
Clutch (freespooling) Rotating ring gear			
Brake (outside the drum) Automatic, full load CBS			
Drum size (mm x mm)		90 x 205 (3.5" x 8.1")	114 x 195.5 (4.5" x 7.7")
Winch construction Aluminum die cast housings with steel drum			
Rotation of winch Wire rope shall be under-wound orientation only			
Mounting bolts pattern (mm x mm)		254 x 114 (10" x 4.5")	254 x 165 (10" x 6.5")
		254 x 165 (10" x 6.5")	
Wire rope	Grade	1,960 N/mm ² (Galvanized aircraft A7 x 19)	
	Recommended Diameter (mm)	10 (3/8")	12 (1/2")
	Capacity (m)	30.5 (100')	30.5 (100')
	Breaking strength (KN)	69.8	100.5
Winch weight		31 kg / 68.3 lb	47 kg / 104 lb
Gross weight		47 kg / 104 lb	61 kg / 134 lb
Box dimension, mm (L x D x H)		650 x 260 x 440	693 x 313 x 473
		(25.6" x 10.2" x 17.3")	(27.3" x 12.3" x 18.6")

DIMENSION mm/in Rhino 8 (12V DC)



Rhino 12 Electric Recovery Winch

- Rate Line Pull: **5,440 kg / 12,000 lb (SAE J706 rating)**
5,100 kg (EN 14492-1 rating)
- Part Number: **PN 851212** 12V DC motor
PN 851224 24V DC motor
- Meet SAE J706, CE Machinery Directive 2006/42/EC, and REMSA Standards & EN 14492-1 supported

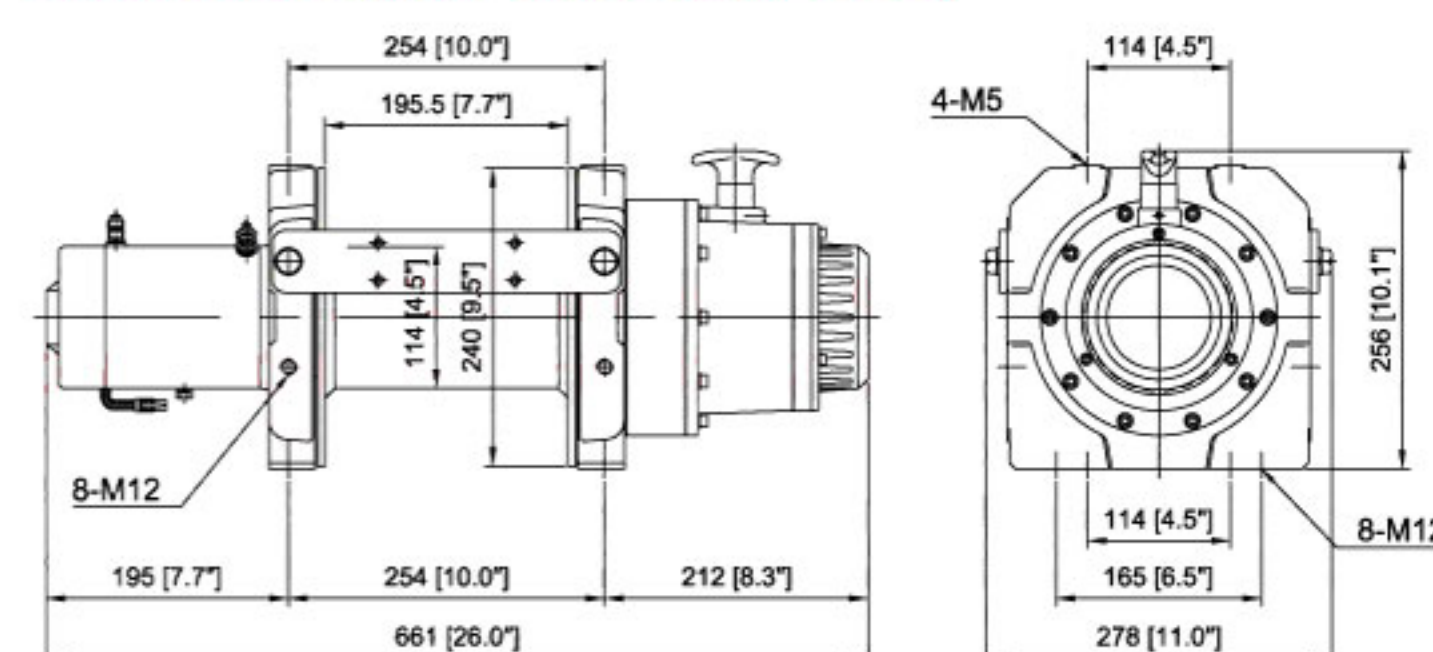
PERFORMANCE DATA

Line Speed and Amp. Draw (1 st layer of wire rope on the drum)						
Model Number	Rhino 8			Rhino 12		
Line Pull kg / lb	Line Speed mpm / fpm	Amp. Draw 12V	Amp. Draw 24V	Line Speed mpm / fpm	Amp. Draw 12V	Amp. Draw 24V
No Load	9.0 / 29.5	45	30	10 / 32.8	40	35
907 / 2,000	3.0 / 10.0	90	60	-	-	-
1,814 / 4,000	1.5 / 5.0	180	120	4.4 / 14.4	140	110
2,722 / 6,000	1.0 / 3.3	260	180	-	-	-
3,630 / 8,000	0.7 / 2.3	340	230	3.5 / 11.5	280	210
4,535 / 10,000	-	-	-	1.5 / 5.0	350	260
5,440 / 12,000	-	-	-	1.3 / 4.3	420	310

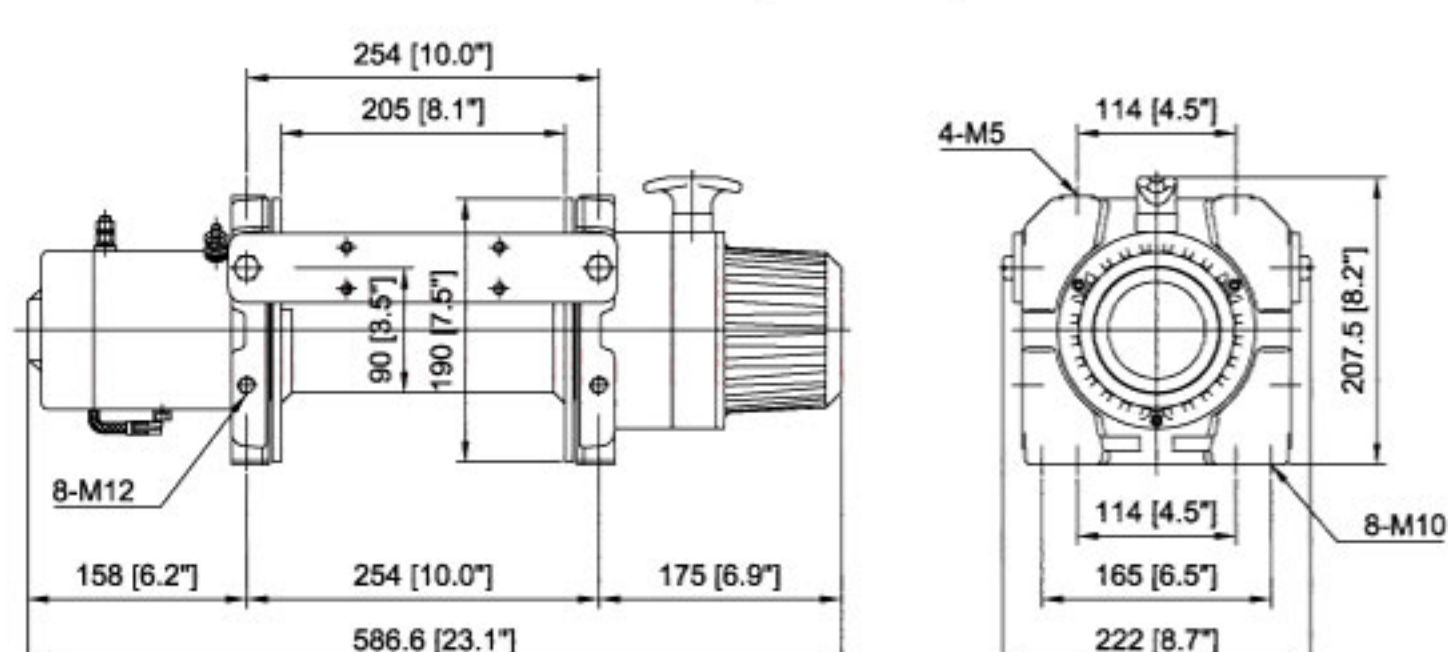
Line Pull and Rope Capacity					
Model Number	Rhino 8			Rhino 12	
Layer of Wire Rope	Pull by layer kg / lb	Total Rope on the Drum m / ft	Pull by layer kg / lb	Total Rope on the Drum m / ft	
1 st	3,630 / 8,000	6.3 / 20.7	5,440 / 12,000	5.9 / 19.4	
2 nd	3,025 / 6,669	13.8 / 45.3	4,534 / 9,996	13 / 42.7	
3 rd	2,593 / 5,717	22.6 / 74.1	3,885 / 8,565	21.4 / 70.2	
4 th	2,269 / 5,002	30.5 / 100	3,399 / 7,494	30.5 / 100	

- Compliant with EN 14492-1 requirements for recovery winches
- The working coefficient for the first rope layer on the drum shall be at least 2.
 - The D/d ratio to the center of the rope shall be at least 10 for the drum.

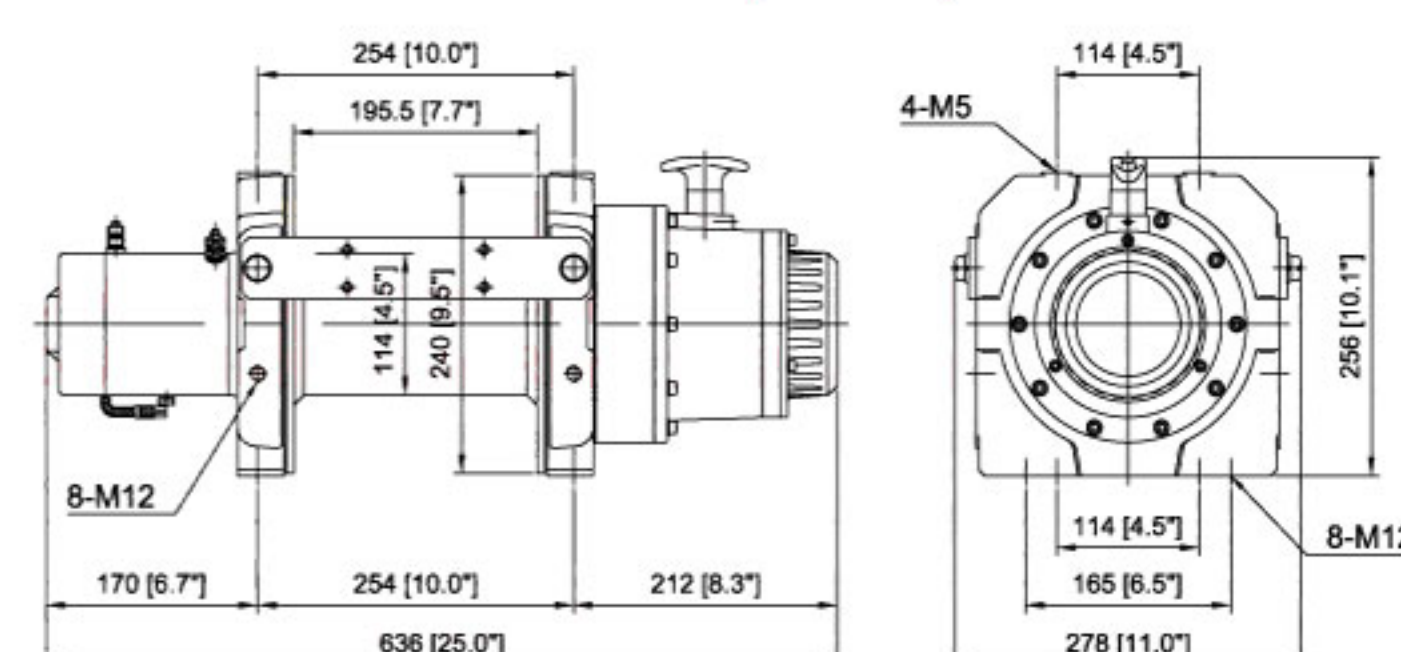
DIMENSION mm/in Rhino 12 (12V DC)



DIMENSION mm/in Rhino 8 (24V DC)



DIMENSION mm/in Rhino 12 (24V DC)





Wolf 8.5 Electric Worm Gear Winch

- Rated Line Pull: **3,856 kg / 8,500 lb**
- Part Number: **PN 780254** 12V DC motor
PN 780988 24V DC motor
- Meet SAE J706, CE Machinery Directive 2006/42/EC



Wolf 12.0 Electric Worm Gear Winch

- Rated Line Pull: **5,443 kg / 12,000 lb**
- Part Number: **PN 782478** 12V DC motor
PN 783415 24V DC motor
- Meet SAE J706, CE Machinery Directive 2006/42/EC

COMEUP worm gear winch comes with heavy duty series wound motor for high torque output and fast line speed under extreme operating condition. It features robust and extreme heavy duty worm drive, detachable weather-resistant control box to be mounted anywhere on the vehicle, 2 stage spur gear plus 1 exceptionally strong worm gear for reversing protection. All worm gear winches come with a mechanism lever clutch (Freespooling) for rapid wire rope payout. The irreversible worm gear brake as well as an auxiliary mechanism ratchet wheel brake performs instant braking and no slip. They are ideal for light commercial applications of car transporter, wrecker, tractor, lorry and fire / rescue engine.

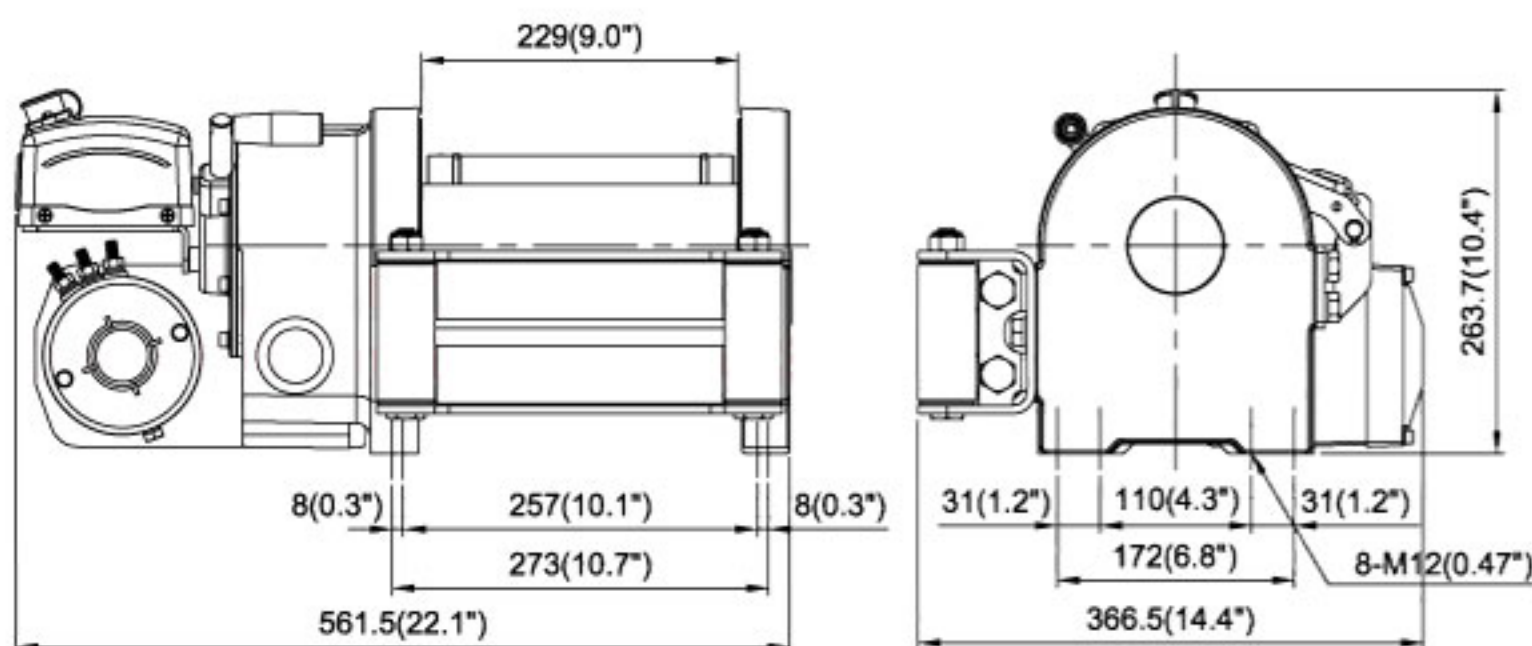
SPECIFICATIONS

Model Number		Wolf 8.5	Wolf 12.0
Rated line pull (1 st layer)		3,856 kg / 8,500 lb	5,443 kg / 12,000 lb
Motor	12V	3,430 w / 4.6 hp	
	24V	1,940 w / 2.6 hp	2,240 w / 3.0 hp
Gear train		2 stage spur gears PLUS worm gear	
Gear ratio		228.9:1	424:1
Clutch (freespooling)		Mechanism lever	
Brake		Irreversible worm gear brake PLUS mechanism ratchet wheel brake	
Rope size (mm x m)		8.0 x 45 (5/16" x 150')	9.5 x 30.5 (3/8" x 100')
Rope type		Galvanized aircraft A7 x 19	
Drum size (mm x mm)		82 x 229 (3.2" x 9")	89 x 229 (3.5" x 9")
Mounting bolts pattern (mm x mm)		273 x 172 (10.7" x 6.8") 257 x 110 (10.1" x 4.3")	
Winch weight		40 kg / 88.2 lb	41 kg / 90.4 lb
Gross weight		51 kg / 112.5 lb	
Box dimension, mm (L x D x H)		610 x 427 x 350 (24" x 16.8" x 13.8")	

PERFORMANCE DATA

Line Speed and Amp. Draw (1 st layer of wire rope on the drum)							Line Pull and Rope Capacity					
Model Number		Wolf 8.5		Wolf 12.0			Model Number		Wolf 8.5		Wolf 12.0	
Line Lift	Line Speed	Amp. Draw		Line Speed	Amp. Draw		Layer of Wire	Pull by Layer	Total Rope on	Pull by Layer	Total Rope on	
kb / lb	mpm / fpm	12V	24V	mpm / fpm	12V	24V	Rope	kg / lb	the Drum m/ft	kg / lb	the Drum m/ft	
No Load	10.6 / 34.8	55	40	6.2 / 20.3	70	40	1 st	3,856 / 8,500	8.0 / 26.4	5,443 / 12,000	7.3 / 24.0	
907 / 2,000	4.3 / 14.1	120	70	-	-	-	2 nd	3,279 / 7,229	17.5 / 57.4	4,563 / 10,060	16.0 / 52.6	
1,814 / 4,000	3.0 / 9.8	200	100	-	-	-	3 rd	2,853 / 6,289	28.4 / 93.1	3,928 / 8,659	26.1 / 85.8	
2,722 / 6,000	2.4 / 7.9	255	130	2.7 / 8.9	180	85	4 th	2,524 / 5,566	40.7 / 133.4	3,448 / 7,601	30.5 / 100	
3,629 / 8,000	2.0 / 6.6	320	160	1.7 / 5.6	270	120	5 th	2,264 / 4,991	45.0 / 150.0			
3,856 / 8,500	1.8 / 5.9	350	170	-	-	-						
4,535 / 10,000	-	-	-	1.4 / 4.6	310	150						
5,443 / 12,000	-	-	-	1.0 / 3.3	350	190						

DIMENSION mm/in (Wolf 8.5/12.0)



COMEUP heavy duty hoist provides an answer to the health and safety recommendations for manual lifting. They come with a U.S. Germany, U.K, France, etc. patented automatic, full load CBS (Cone Brake Structure) PLUS an auxiliary inverted current brake hold full load. The series wound motor with high torque and fast line speed and high efficiency 3-stage planetary gear train makes effortless lifting of heavy-weights. It helps you work more efficiently.

- Heavy duty series wound motor gives high torque and fast line speed.
- Detachable control box mounted anywhere on the vehicle.
- High efficiency 3-stage planetary gear train for greater pulling force.
- The U.S. Germany, U.K., France, etc patents of automatic, full load CBS (Cone Brake Structure) PLUS an auxiliary inverted current brake-hold full load without slip.
- In compliance with ANSI B30.5 standard, $D/d \geq 18$, and wire rope safety factor ≥ 3.5
- Provide an answer to the health and safety recommendations for manual lifting.
- Meet ANSI B30.5 and CE Machinery Directive 2006/42/EC.



DHC-1200 Heavy Duty Hoist

- Rated Line Lift: **544 kg / 1,200 lb**
- Part Number: **PN 750552** 12V DC motor
PN 750566 24V DC motor



DHC-1600 Heavy Duty Hoist

- Rated Line Lift: **726 kg / 1,600 lb**
- Part Number: **PN 750937** 12V DC motor
PN 750985 24V DC motor

SPECIFICATIONS

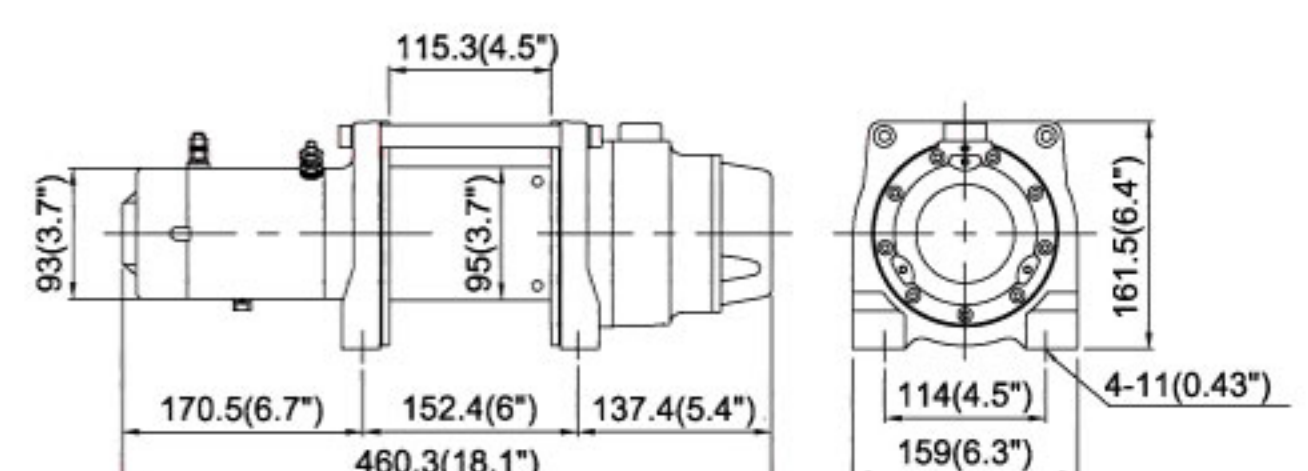
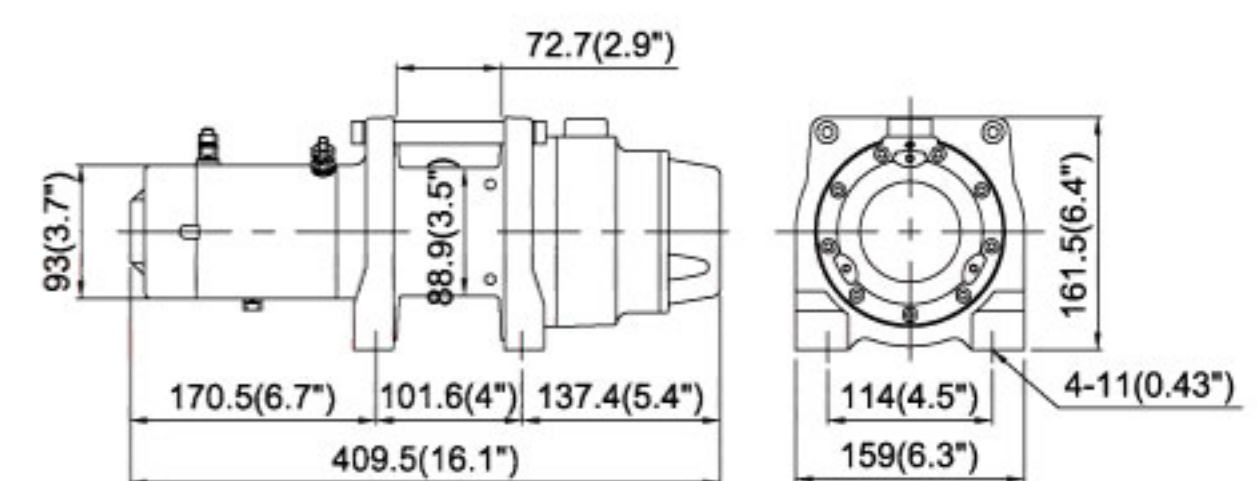
Model Number		DHC-1200	DHC-1600
Rated line lifting (1 st layer)		544 kg / 1,200 lb	726 kg / 1,600 lb
Motor	12V	900 w / 1.2 hp	
	24V	600 w / 0.8 hp	
Gear train		3 stage planetary gears	
Gear ratio		216:1	
Brake		Automatic, full load CBS (Cone Brake Structure) PLUS an auxiliary inverted current brake	
Rope size (mm x m)		4.8 x 18.3 (3/16" x 60')	5.5 x 19.8 (7/32" x 65')
Rope type		Galvanized aircraft A7 x 19	
Drum size (mm x mm)		89 x 72.7 (3.5" x 2.9")	95 x 115.3 (3.8" x 4.5")
Mounting bolts pattern (mm x mm)		101.6 x 114 (4" x 4.5")	152.4 x 114 (6" x 4.5")
Winch weight		13.8 kg / 30.4 lb	15 kg / 33 lb
Gross weight		22 kg / 48.4 lb	24 kg / 52.8 lb
Box dimension, mm (L x D x H)		440 x 287 x 193 (17.3" x 11.3" x 7.6")	490 x 287 x 193 (17.3" x 11.3" x 7.6")

PERFORMANCE DATA

Line Speed and Amp. Draw (1 st layer of wire rope on the drum)					Line Lift and Rope Capacity		
Model Number					Model Number		
DHC-1200					DHC-1200		
Line Lift kb / lb	Line Speed mpm / fpm	Amp. Draw 12V	Amp. Draw 24V	Percentage Duty Cycle %ED	Layer of Wire Rope	Lift by Layer kg / lb	Total Rope on the Drum m/ft
No Load	12.5 / 41.0	60	35	25	1 st	544 / 1,200	4.2 / 13.8
113 / 250	9.5 / 31.2	80	50	23	2 nd	494 / 1,089	8.8 / 28.9
227 / 500	8.0 / 26.2	100	60	20	3 rd	452 / 996	6.6 / 21.7
340 / 750	7.0 / 23.0	120	68	18	4 th	416 / 917	18.3 / 60.0
454 / 1,000	6.2 / 20.3	135	75	15			
544 / 1,200	5.5 / 18.0	150	80	13			

Line Speed and Amp. Draw (1 st layer of wire rope on the drum)					Line Lift and Rope Capacity		
Model Number					Model Number		
DHC-1600					DHC-1600		
Line Lift kb / lb	Line Speed mpm / fpm	Amp. Draw 12V	Amp. Draw 24V	Percentage Duty Cycle %ED	Layer of Wire Rope	Lift by Layer kg / lb	Total Rope on the Drum m/ft
No Load	14.0 / 45.9	60	35	25	1 st	726 / 1,600	6.3 / 20.7
113 / 250	10.6 / 34.8	80	60	23	2 nd	653 / 1,440	13.4 / 44.0
227 / 500	8.9 / 29.2	110	80	20	3 rd	594 / 1,309	19.8 / 65.0
340 / 750	7.7 / 25.3	135	90	18			
454 / 1,000	6.2 / 20.3	160	100	15			
544 / 1,200	5.0 / 16.4	180	110	13			
726 / 1,600	4.5 / 14.8	200	120	11			

DIMENSION mm/in (DHC-1200/1600)



DHC-2000 Heavy Duty Hoist

- Rated Line Lift: **907 kg / 2,000 lb**
- Part Number: **PN 751004** 12V DC motor
PN 751383 24V DC motor



DHC-3000 Heavy Duty Hoist

- Rated Line Lift: **1,361 kg / 3,000 lb**
- Part Number: **PN 751516** 12V DC motor
PN 751680 24V DC motor



SPECIFICATIONS

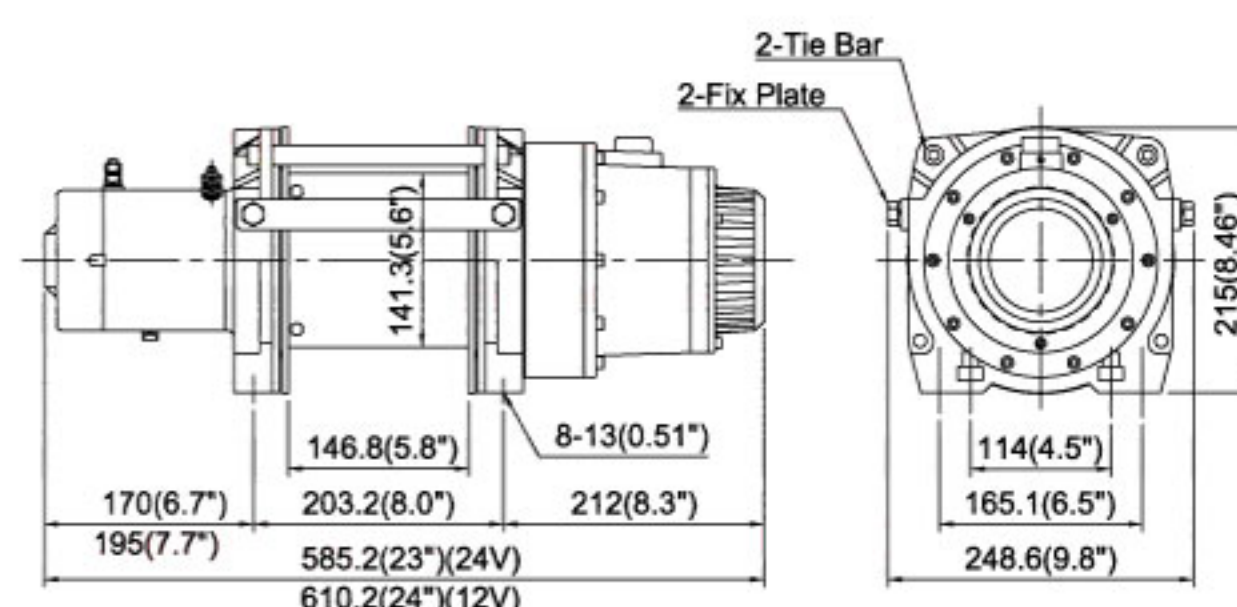
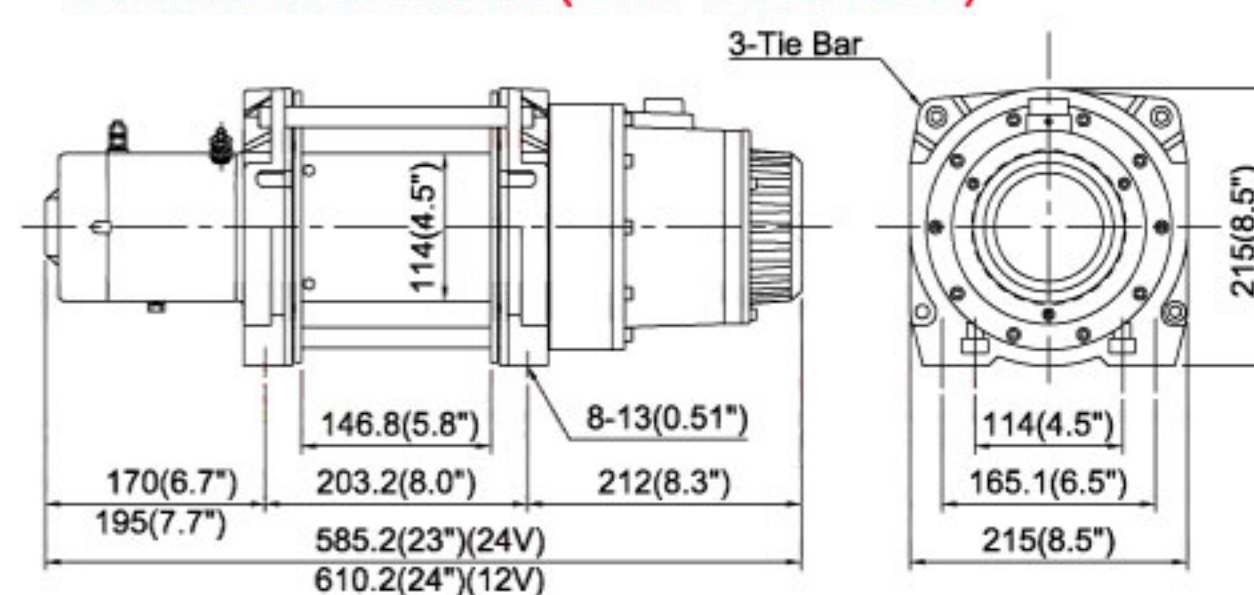
Model Number		DHC-2000	DHC-3000
Rated line lifting (1 st layer)		907 kg / 2,000 lb	1,361 kg / 3,000 lb
Motor	12V	4,180 w / 5.6 hp	
	24V	2,690 w / 3.6 hp	
Gear train		3 stage planetary gears	
Gear ratio		261:1	315:1
Brake		Automatic, full load CBS (Cone Brake Structure) PLUS an auxiliary inverted current brake	
Rope size (mm x m)		6.3 x 30.5 (1/4" x 100')	8.3 x 22.9 (21/64" x 75')
Rope type		Galvanized aircraft A7 x 19	
Drum size (mm x mm)		114 x 146.8 (4.5" x 5.8")	141.3 x 146.8 (5.6" x 5.8")
Mounting bolts pattern (mm x mm)		203.2 x 114 (8" x 4.5")	
Winch weight		37 kg / 81.6 lb	40 kg / 88 lb
Gross weight		48 kg / 105.6 lb	54.5 kg / 119.7 lb
Box dimension, mm (L x D x H)		620 x 360 x 263 (24.4" x 14.2" x 10.4")	

PERFORMANCE DATA

Line Speed and Amp. Draw (1 st layer of wire rope on the drum)					Line Lift and Rope Capacity		
Model Number	DHC-2000				Model Number	DHC-2000	
Line Lift kb / lb	Line Speed mpm / fpm	Amp. Draw 12V 24V	Percentage Duty Cycle %ED		Layer of Wire Rope	Lift by Layer kg / lb	Total Rope on the Drum m/ft
No Load	10.2 / 33.5	75 50	25		1 st	907 / 2,000	8.5 / 27.9
227 / 500	7.1 / 23.3	140 80	23		2 nd	820 / 1,808	17.9 / 58.7
454 / 1,000	6.0 / 19.7	170 100	20		3 rd	748 / 1,649	28.2 / 92.5
680 / 1,500	4.9 / 16.1	190 120	18		4 th	688 / 1,517	30.5 / 100
907 / 2,000	4.2 / 13.8	210 140	15				

Line Speed and Amp. Draw (1 st layer of wire rope on the drum)					Line Lift and Rope Capacity		
Model Number	DHC-3000				Model Number	DHC-3000	
Line Lift kb / lb	Line Speed mpm / fpm	Amp. Draw 12V 24V	Percentage Duty Cycle %ED		Layer of Wire Rope	Lift by Layer kg / lb	Total Rope on the Drum m/ft
No Load	11.7 / 38.4	80 50	25		1 st	1,361 / 3,000	8.1 / 26.6
227 / 500	8.8 / 28.9	130 75	23		2 nd	1,225 / 2,701	17.1 / 56.1
454 / 1,000	7.6 / 24.9	165 100	20		3 rd	1,114 / 2,456	22.9 / 75
680 / 1,500	6.5 / 21.3	190 125	18				
907 / 2,000	5.6 / 18.4	210 140	15				
1,134 / 2,500	4.9 / 16.1	230 155	14				
1,361 / 3,000	4.3 / 14.1	250 170	13				

DIMENSION mm/in (DHC-2000/3000)



Remote Control

PN 880025

Switch W/5 m (17') cord for DHC-1200/1600/2000/3000, Wolf 8.5/12.0

PN 880126

Switch W/5 m (17') cord for Rhino 8/12
(coming with protective thermal sensor LED)



DC Solenoid

PN 881077 (12V) / **PN 881078** (24V)
for DHC-1200/1600/2000/3000



Sealed Contactor

PN 881355 (12V) / **PN 881356** (24V)
400A, for Wolf 8.5/12.0, Rhino 8/12

PN 881357 (12V) / **PN 881358** (24V)
250A, for DHC-1200/1600/2000/3000



• PN 881355
• PN 881356



• PN 881357
• PN 881358

Snatch Block

PN 881079

Max load 10,000 kg/22,000 lb
for DHC-1200/1600/2000/3000, Yak 5/7

PN 881082

Max load 13,610 kg/30,000 lb
for HV-8/10/12, Wolf 8.5/12.0, Rhino 8/12



• PN 881079



• PN 881082

Battery Isolation Switch

PN 881097

2 Position Off-On 12V 500 Amp for Wolf 8.5/12.0,
DHC-1200/1600/2000/3000, Rhino 8/12



Roller Fairlead

PN 880160

179 mm throat for HV-8 Std. drum

PN 880180

245 mm throat for HV-8 Long drum, HV-10/12/15

PN 880023

210 mm throat for Wolf 8.5 / 12.0

PN 880198

362 mm throat for HV-20000

PN 880216

342 mm throat for HV-30000

PN 881587

210 mm throat for Rhino 8/12

PN 881479

149 mm throat for Yak 5/7 Std. drum

PN 881480

229 mm throat for Yak 5/7 Long drum



Detachable Control Box

PN 881153 (12V) / **PN 881154** (24V) for DHC-1200/1600/2000/3000

PN 880340 (12V) / **PN 880341** (24V) for Wolf 8.5/12.0

PN 881581 (12V) / **PN 881582** (24V)

for Rhino 8 (comes with built-in over-load protector)

PN 881645 (12V) / **PN 881646** (24V)

for Rhino 12 (comes with built-in over-load protector)



• PN 881153 (12V)
• PN 881154 (24V)



• PN 880340 (12V)
• PN 880341 (24V)



• PN 881581 (12V) / PN 881582 (24V)
• PN 881645 (12V) / PN 881646 (24V)

Cable Tensioner

PN 881238

for HV-8 Std. drum

PN 880179

for HV-8 Long drum, HV-10/12/15

PN 880197

for HV-20000

PN 880215

for HV-30000

PN 880358

for Wolf 8.5/12.0

PN 881236

for Yak 5/7 Std. drum

PN 881237

for Yak 5/7 Long drum

PN 881667

for Rhino 8/12



Air Clutch

PN 880181

for HV-8/10/12/15/20000,

PN 880213

for HV-30000



Extended Clutch Kit

PN 881314

for HV-8/10/12/15



Over Center Valve

PN 880145

70-210 bar setting for HV-8/10/12/15

PN 880184

70-210 bar setting for HV-20000

PN 880201

70-210 bar setting for HV-30000



Wire Rope with Hook

PN 881245 4.8 mm x 19.8 m for DHC-1200

PN 881147 5.5 mm x 19.8 m for DHC-1600

PN 881149 6.3 mm x 30.5 m for DHC-2000

PN 881150 8.3 mm x 22.9 m for DHC-3000

PN 881239 8.0 mm x 45 m for Wolf 8.5

PN 880106 9.5 mm x 30.5 m for Wolf 12.0



Winch Accessory Kit

Heavy Duty Kit

Part Number: **PN 881095**

for HV-8/10/12, Wolf 8.5/12.0, Rhino 8/12, Yak 5/7

• 13,610 kg / 30,000 lb maximum capacity snatch block, **PN 881082**

• 100mm x 2.4m (4" x 8') tree trunk protector strap, **PN 881091**

• 75mm x 9m (3" x 30') recovery strap rated

to 9,797 kg / 21,600 lb, **PN 881090**

• Bow shackle, 20 mm (3/4") pin diameter, **PN 881092**

• 3 m of 8 mm (10' of 5/16") grade 70 choker chain with hooks, **PN 881096**

• Winch cover, **PN 881094**

• Leather gloves, **PN 881089**

• Nylon soft case, **PN 881093**



Emergency Stop Switch

• 400A **PN 881093**



Industrial Winch & Accessories

Series		Hydraulic Recovery Winch							
Model Number		HV-8	HV-10	HV-12	HV-15	HV-20000	HV-30000	Yak 5	Yak 7
Gear Train		Planetary gears						Worm gears	
Rated Line Pull	SAE J706 rating	3,630 kg / 8,000 lb	4,535 kg / 10,000 lb	5,440 kg / 12,000 lb	6,800 kg / 15,000 lb	9,070 kg / 20,000 lb	13,610 kg / 30,000 lb	2,268 kg / 5,000 lb	3,175 kg / 7,000 lb
	EN 14492-1 rating	3,560 kg	4,300 kg	5,100 kg	6,800 kg	-	-	2,200 kg	3,200 kg
Over-Center Valve		●	●	●	●	●	●	●	●
Roller Fairlead	For std. drum	●	●	●	●	●	●	●	●
	For long drum	●	-	-	-	-	-	●	●
Cable Tensioner	For std. drum	◎	◎	◎	◎	●	●	◎	◎
	For long drum	◎	-	-	-	-	-	◎	◎
Air Clutch		◎	◎	◎	◎	●	●	-	-
Snatch Block		◎	◎	◎	-	-	-	◎	◎
Base Plate		-	-	-	-	●	●	-	-

Series		Electric Recovery Winch				Heavy Duty Hoist			
Model Number		Rhino 8	Rhino 12	Wolf 8.5	Wolf 12.0	DHC-1200	DHC-1600	DHC-2000	DHC-3000
Gear Train		Planetary gears		Worm gears		Planetary gears			
Rated Line Pull or Lifting Load	SAE J706 rating	3,630 kg / 8,000 lb	5,440 kg / 12,000 lb	3,856 kg / 8,500 lb	5,443 kg / 12,000 lb	544 kg / 1,200 lb	726 kg / 1,600 lb	907 kg / 2,000 lb	1,361 kg / 3,000 lb
	EN 14492-1 rating	3,560 kg	5,100 kg	-	-	-	-	-	-
Remote Control		●	●	●	●	●	●	●	●
Control Box	12V	●	●	●	●	●	●	●	●
	24V	●	●	●	●	●	●	●	●
Wire Rope w/Hook		◎	◎	●	●	●	●	●	●
Roller Fairlead		●	●	●	●	-	-	-	-
Battery Lead		●	●	●	●	●	●	●	●
Cable Tensioner		◎	◎	●	●	-	-	-	-
Snatch Block		◎	◎	◎	◎	◎	◎	◎	◎

● Means as a standard accessory / ◎ Means as an option accessory

APPAREL

Cap

Unstructured black brushed cotton cap with COMEUP logo embroidered on front and "Work Tough, Play Tough" on back. The white shape on the visor of a cap delivers bright COMEUP Tough's spirit. **PN 881660**



Flag



• Flag - Red with White, 144 x 96 cm

Polo Shirt, **PN 881659**

M/L/XL



Sticker



• Sticker 45 cm positive



• Sticker 10 cm positive

Duffel Bag

The duffel bag was a black nylon soft duffel bag. Suitable for traveler usage or be a Winch Accessory kit. **PN 881661**

- Dimensions, cm (L x D x H) : 50 x 25 x 26
- Durable nylon construction
- Heavy-duty zippers
- Reinforced stitching



Environmental Protection Bag



• Dimension, cm (L x D x H) : 45 x 12 x 35