



• Limited One (1) Year Warranty

INDUSTRIAL WINCH

As a professional winch manufacturer, COMEUP provides different models of hydraulic or electric recovery winches and heavy duty hoists for industrial applications. COMEUP Industrial Winches comes with the supreme power and reliability to handle the most demanding situations, including both military and commercial purposes. A greater D/d ratio (wire rope/drum diameter) allows for heavy duty applications on car transporters, wreckers, tractors, trucks and fire / rescue vehicles. COMEUP industrial winches meet international standards such as SAE J706, CE Machinery Directive 2006/42/EC, and EN 14492-1:2006 Power Driven Winches. It wins the clients' trust and appreciation through reliable quality, state-of-the-art process and innovation.

▲ HYDRAULIC RECOVERY WINCH



▲ ELECTRIC RECOVERY WINCH



▲ HEAVEY DUTY HOIST



HYDRAULIC RECOVERY WINCH

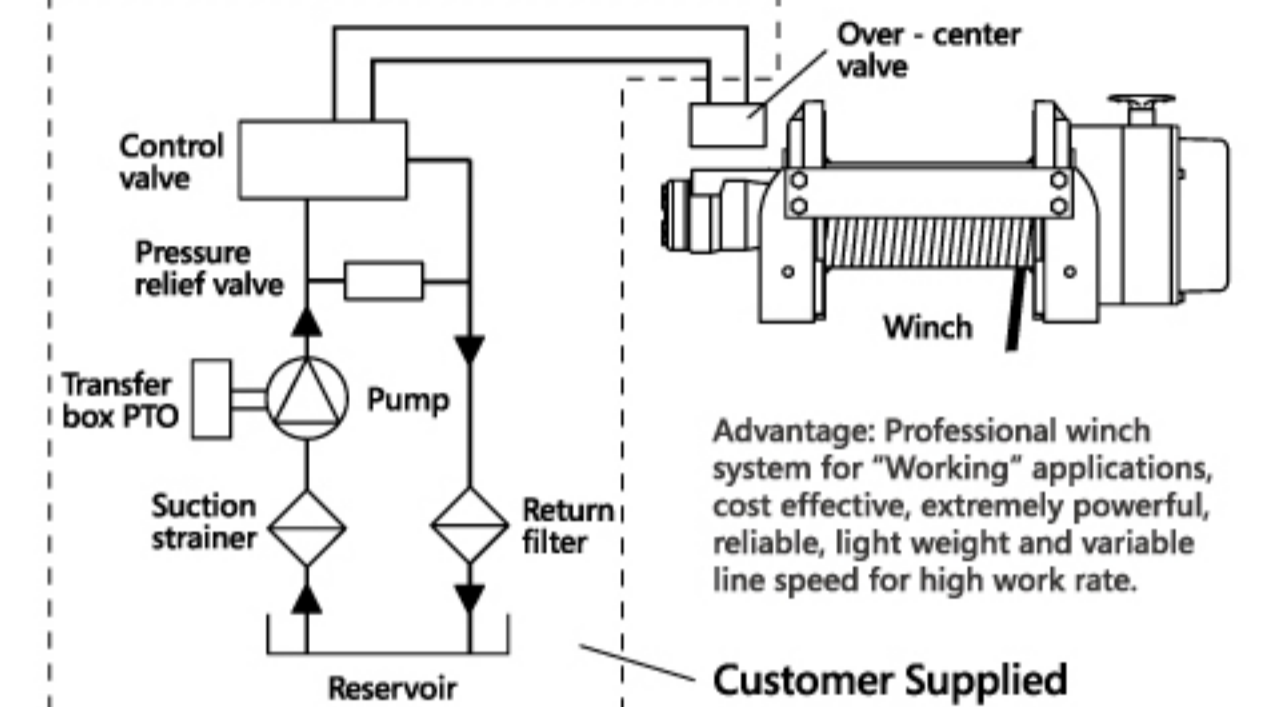
Powered by a PTO (power take off) unit driven pump, COMEUP Hydraulic Recovery Winches feature a professional hydraulic system for "Working" applications at cost effective, extremely powerful, reliable, light weight and variable line speed for high work rate. They come with a drag brake and over-center valve providing complete braking without slip. The efficient and constant operating high torque motor supports professional applications in tough situations. All COMEUP hydraulic recovery winches are for a particular applications such as rescuing and recovering vehicles, cargo trucks, vehicle recovery and many other commercial vehicles.

Summary:

- Powered by an onboard hydraulic pump or PTO
- Fast and variable recovery speeds for high speed working
- Efficient and constant operating high torque motor
- 2 stage planetary gear train for greater pulling force
- Turn clutch by ergonomic T-handle for rapid wire rope payout
- Drag brake and over-center valve providing complete braking
- EN 14492-1 supported: 10:1 D/d ratio and 2:1 wire rope strength allow severe duty vehicles and commercial recovery
- Meet SAE J706, CE Machinery Directive 2006/42/EC, and EN 14492-1:2006 Power Driven Winches.

Hydraulic System Installation

(Powered by a PTO/power take off unit driven pump)



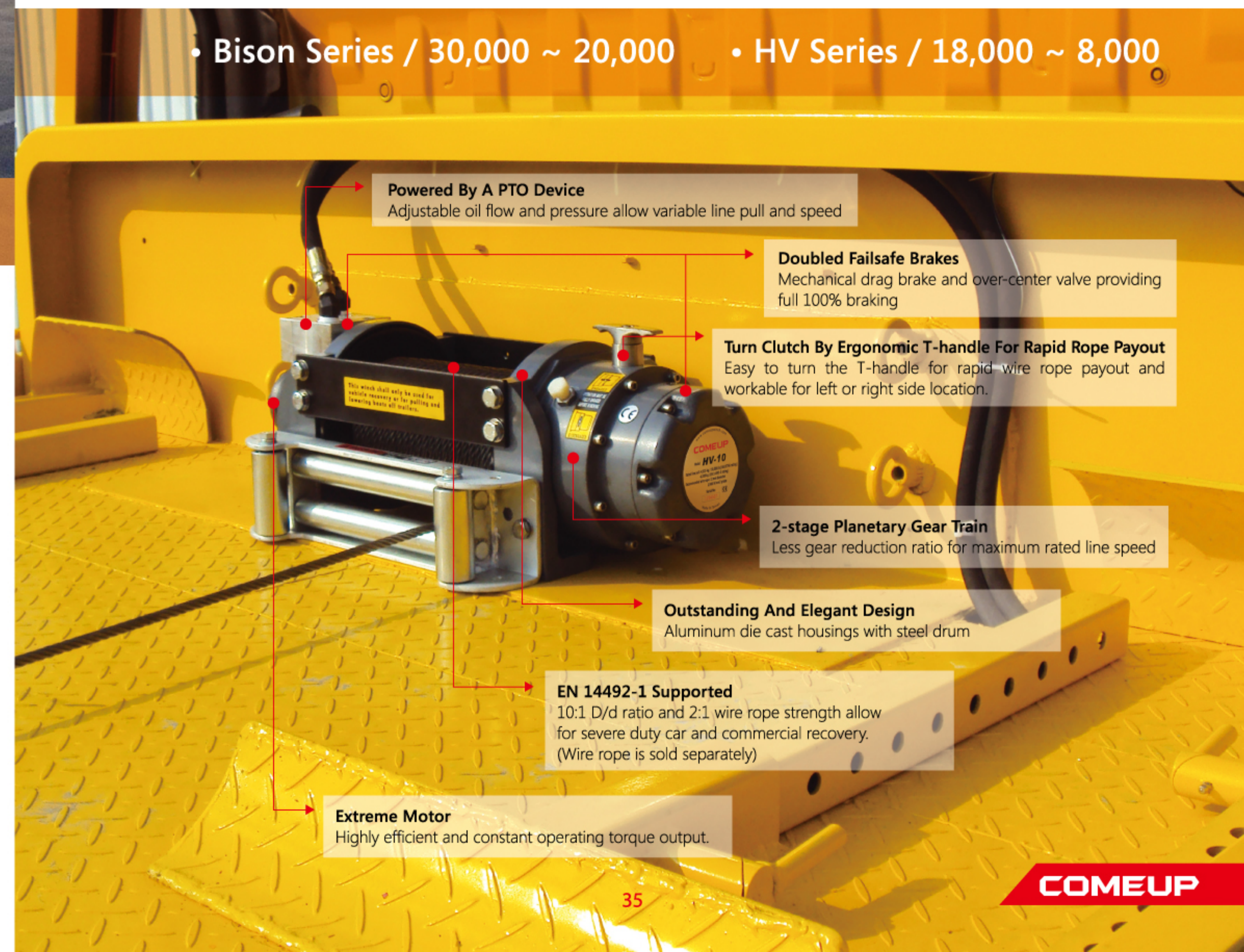
Advantage: Professional winch system for "Working" applications, cost effective, extremely powerful, reliable, light weight and variable line speed for high work rate.

Compliant with EN 14492-1 requirements for vehicle recovery winch:

- * The working coefficient for the first rope layer on the drum shall be at least 2
- * The D/d ratio to the center of the rope shall be at least 10 for the drum.
- * Drum freeboard shall be at least 1.5 x rope diameter.

• Bison Series / 30,000 ~ 20,000

• HV Series / 18,000 ~ 8,000



Powered By A PTO Device

Adjustable oil flow and pressure allow variable line pull and speed

Doubled Failsafe Brakes

Mechanical drag brake and over-center valve providing full 100% braking

Turn Clutch By Ergonomic T-handle For Rapid Rope Payout

Easy to turn the T-handle for rapid wire rope payout and workable for left or right side location.

2-stage Planetary Gear Train

Less gear reduction ratio for maximum rated line speed

Outstanding And Elegant Design

Aluminum die cast housings with steel drum

EN 14492-1 Supported

10:1 D/d ratio and 2:1 wire rope strength allow for severe duty car and commercial recovery. (Wire rope is sold separately)

Extreme Motor

Highly efficient and constant operating torque output.



HYDRAULIC RECOVERY WINCH

Bison

COMEUP new Bison series are design to be used for severe duty trailers, roll-back carriers, and commercial recovery applications. It provide line pull of 20,000 ~ 30,000 lb rating with high efficient motor and power by a PTO driven pump with variable recovery speeds for high working. Moreover built-in air clutch for rapid wire rope payout. The new brake patented MDB (Multi-Disc Brake) functions for holding a full load. Bison series winch meet Machinery Directive 2006/42/EC and CE specifications. Roller fairlead, cable tensioner and two ways counterbalance valve come as standard accessories.

Powered by a PTO (power take off unit) driven pump with variable recovery speeds for high working.



Bison 30 Hydraulic Recovery Winch



- Rated Line Pull: **13,600 kg / 30,000 lb** (SAE J706 rating)
- Part Number: **PN 683030** Std. drum
- Meet SAE J706 and CE Machinery Directive 2006/42/EC

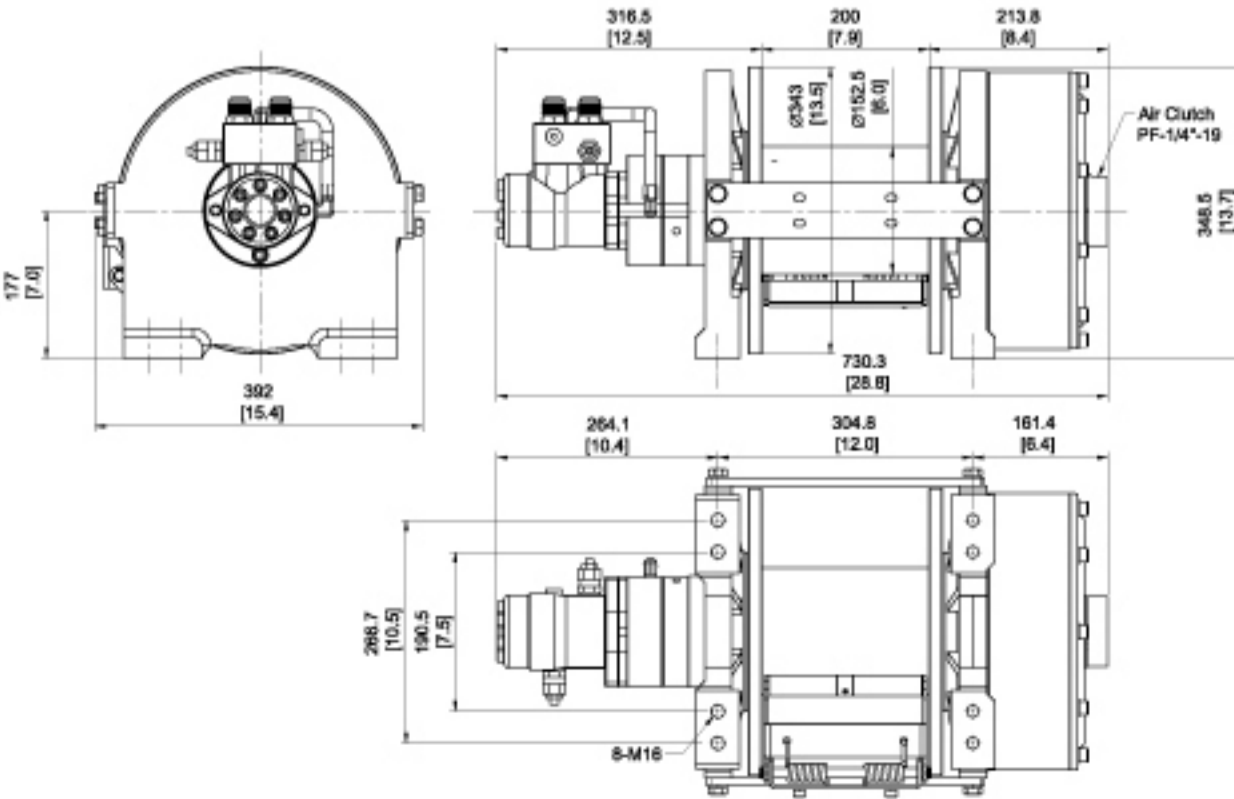
SPECIFICATIONS :

- **Line speed (at 1st layer of rope)** : 5 mpm at 60 l/min (16 fpm at 15.9 g/min)
- **Operation pressure** : 150 bar / 2,175 psi
- **Max oil flow** : 60 l/min (15.9 g/min)
- **Hydraulic motor** : 155.7 cm³ / rev (9.5 in³ / rev)
- **Gear ratio** : 2-stage planetary gear 41:1
- **Winch construction** : Cast housing with steel drum
- **Clutch (Freespooling)** : Output shaft disengaged
- **Brake** : Multi-Disc Brake (MDB) patented
- **Rotation of winch** : Wire rope shall be under-wound orientation only
- **Drum barrel diameter** : 152.5 mm (6")
- **Drum flange diameter** : 343 mm (13.5")
- **Distance between flanges** : 200 mm (7.9")
- **Mounting bolts pattern** : 190.5 x 304.8 mm (7.5" x 12.0")
266.7 x 304.8 mm (10.5" x 12.0")
- **Wire rope recommended** : 16 mm (5/8") diameter, 1,960 N/mm² grade 43 m (141'), a minimum breaking strength of 179 KN is required
- **Winch weight** : 160 kg / 352 lb
- **Gross weight** : 190 kg / 419 lb
- **Box dimension** : 860 x 500 x 510 mm (33.6" x 19.7" x 16.3")

PERFORMANCE DATA

Line Pull and Rope Capacity			Line Speed
Layer of Wire Rope	Pull by Layer, kg / lb	Total Rope on the Drum, m / ft	at 60 l/min (15.9 g/min) mpm / fpm
1 st	13,600 / 30,000	6 / 20	5 / 16
2 nd	11,438 / 25,216	14 / 44	5.9 / 19
3 rd	9,864 / 21,745	22 / 73	6.9 / 23
4 th	8,670 / 19,115	32 / 104	7.8 / 26
5 th	7,735 / 17,052	43 / 141	8.8 / 29

DIMENSION mm/in



HV-20000 Hydraulic Recovery Winch



- Rated Line Pull: **9,070 kg / 20,000 lb** (SAE J706 rating)
- Part Number: **PN 686541**
- Meet SAE J706 and CE Machinery Directive 2006/42/EC

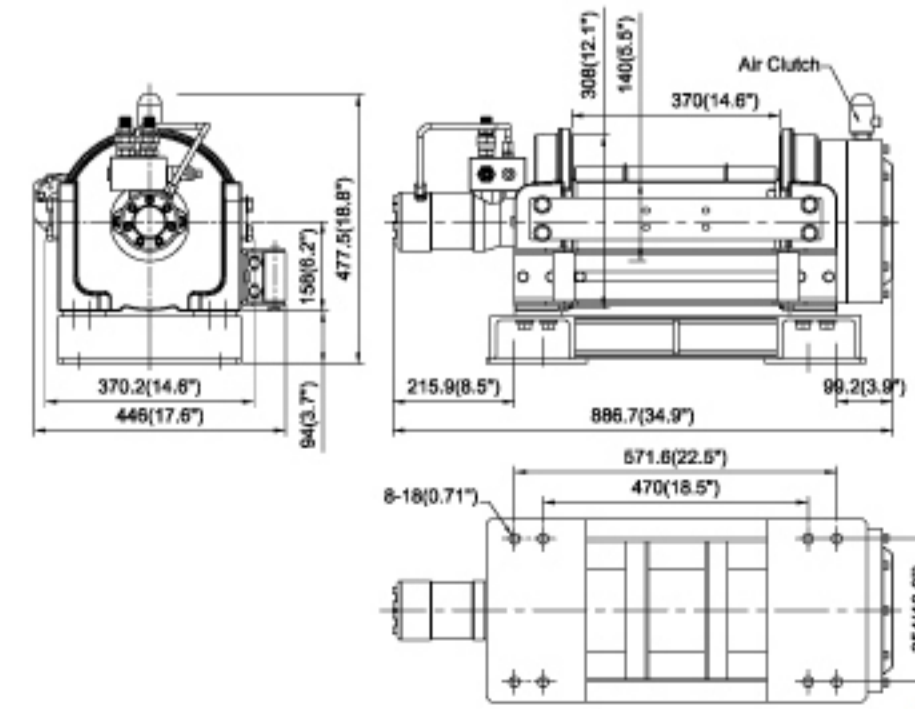
SPECIFICATIONS :

- **Line speed (at 1st layer of rope)** : 7.2 mpm at 60 l/min (23.6 fpm at 15.9 g/min)
- **Operation pressure** : 175 bar / 2,540 psi
- **Max oil flow** : 60 l/min (15.9 g/min)
- **Hydraulic motor** : 125 cm³ / rev (7.6 in³ / rev)
- **Gear ratio** : 2-stage planetary gear 32:1
- **Winch construction** : Steel cast housings with steel drum
- **Clutch (Freespooling)** : Rotating ring gear
- **Brake** : Hydraulic motor with negative brake together with over-center valve supplied
- **Rotation of winch** : Wire rope shall be under-wound orientation only
- **Drum barrel diameter** : 140 mm (5.5")
- **Drum flange diameter** : 308 mm (12.1")
- **Distance between flanges** : 370 mm (14.6")
- **Mounting bolts pattern** : 470 x 254 mm (18.5" x 10.0")
571.6 x 254 mm (22.5" x 10.0")
- **Wire rope recommended** : 14 mm (9/16") diameter, 1,770 N/mm² grade 80 m (265'), a minimum breaking strength of 129 KN is required
- **Winch weight** : 200 kg / 440 lb
- **Gross weight** : 230 kg / 506 lb
- **Box dimension** : 940 x 500 x 670 mm (37" x 19.7" x 26.4")

PERFORMANCE DATA

Line Pull and Rope Capacity			Line Speed
Layer of Wire Rope	Pull by Layer, kg / lb	Total Rope on the Drum, m / ft	at 60 l/min (15.9 g/min) mpm / fpm
1 st	9,070 / 20,000	12.3 / 40.4	7.2 / 23.6
2 nd	7,673 / 16,916	26.8 / 87.9	8.5 / 27.9
3 rd	6,649 / 14,659	43.6 / 143	9.8 / 32.2
4 th	5,866 / 12,932	62.6 / 205.4	11.1 / 36.4
5 th	5,248 / 11,570	80 / 265	12.4 / 40.7

DIMENSION mm/in



HV-15 Hydraulic Recovery Winch

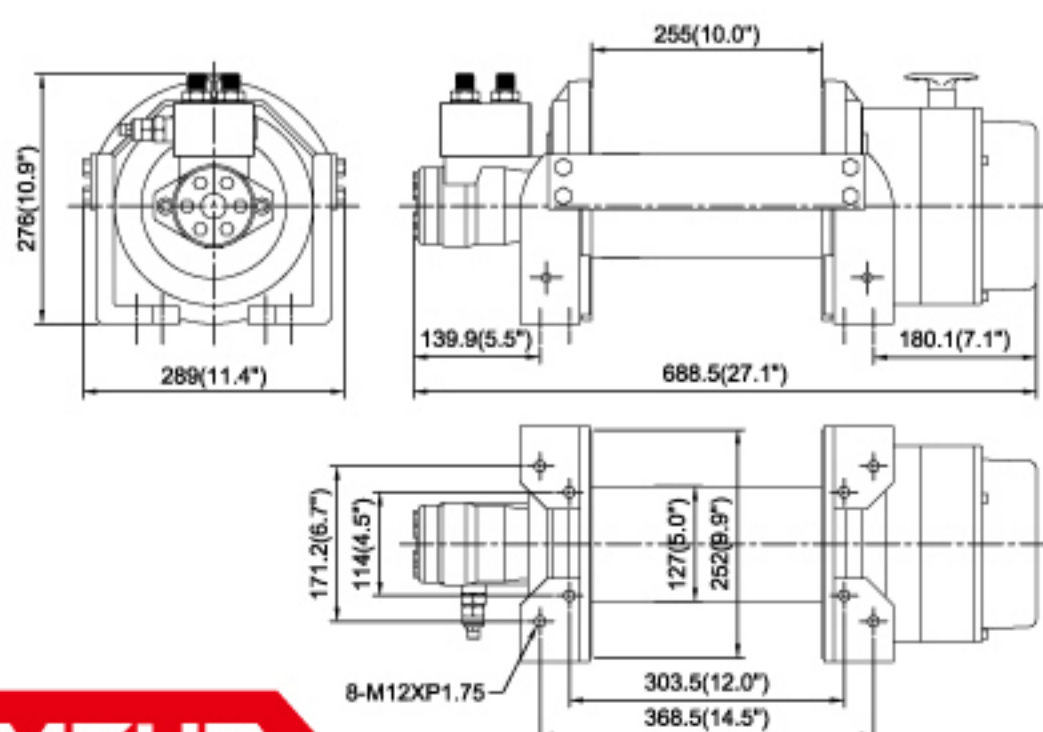
- Rated Line Pull: **6,800 kg / 15,000 lb**
(EN 14492-1 rating & SAE J706 rating)
- Part Number: **PN 686732** Std. drum
PN 687548 Std. drum (Clutch in left side)
- Meet SAE J706, CE Machinery Directive 2006/42/EC,
and EN 14492-1:2006 Power Driven Winches

SPECIFICATIONS :

- Line speed (at 1st layer of rope)** : 9 mpm at 60 l/min (30 fpm at 15.9 g/min)
- Operation pressure** : 150 bar / 2,175 psi
- Max oil flow** : 60 l/min (15.9 g/min)
- Hydraulic motor** : 156 cm³ / rev (9.5 in³ / rev)
- Gear ratio** : 2-stage planetary gear 19.4:1
- Winch construction** : Aluminum die cast housings with steel drum
- Clutch (Freespooling)** : Rotating ring gear
- Brake** : Spring applied drag brake together with over-center valve supplied
- Rotation of winch** : Wire rope shall be under-wound orientation only
- Drum barrel diameter** : 127 mm (5.0")
- Drum flange diameter** : 252 mm (9.9")
- Distance between flanges** : 255 mm (10")
- Mounting bolts pattern** : 303.5 x 114 mm (12.0" x 4.5")
368.5 x 171.2 mm (14.5" x 6.7")
- Wire rope recommended** : 14 mm (9/16") diameter, 1,960 N/mm² grade
27 m (89'), a minimum breaking strength of 137 KN (30,742 lbf) is required.
- Winch weight** : 72 kg / 158.7 lb
- Gross weight** : 88 kg / 194 lb
- Box dimension** : 715 x 415 x 311 mm (28.1" x 16.3" x 12.2")

PERFORMANCE DATA

Line Pull and Rope Capacity			Line Speed
Layer of Wire Rope	Pull by Layer, kg / lb	Total Rope on the Drum, m / ft	at 60 l/min (15.9 g/min) mpn / fpm
1 st	6,800 / 15,000	7.8 / 25.6	9 / 30
2 nd	5,673 / 12,507	17.3 / 56.8	10.5 / 34.4
3 rd	4,867 / 10,730	27 / 89	12.3 / 40.4

DIMENSION mm/in**HV-12 Hydraulic Recovery Winch**

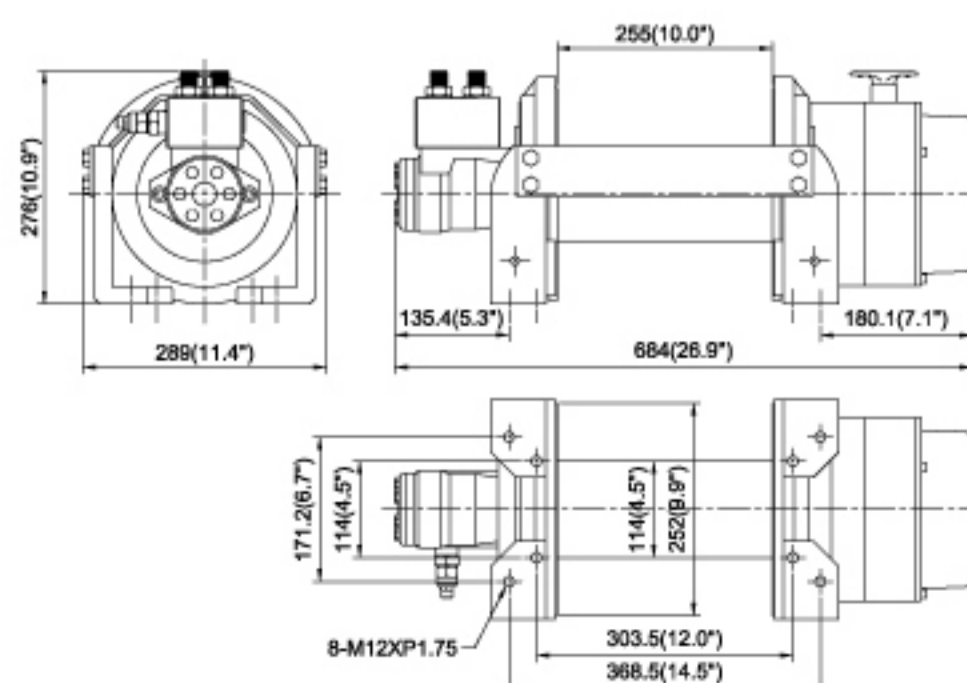
- Rated Line Pull: **5,440 kg / 12,000 lb** (SAE J706 rating)
5,100 kg (EN 14492-1 rating)
- Part Number: **PN 684311** Std. drum
PN 685433 Std. drum (Clutch in left side)
- Meet SAE J706, CE Machinery Directive 2006/42/EC,
and EN 14492-1:2006 Power Driven Winches

SPECIFICATIONS :

- Line speed (at 1st layer of rope)** : 10 mpm at 60 l/min (33 fpm at 15.9 g/min)
- Operation pressure** : 150 bar / 2,175 psi
- Max oil flow** : 60 l/min (15.9 g/min)
- Hydraulic motor** : 125 cm³ / rev (7.6 in³ / rev)
- Gear ratio** : 2-stage planetary gear 19.4:1
- Winch construction** : Aluminum die cast housings with steel drum
- Clutch (Freespooling)** : Rotating ring gear
- Brake** : Spring applied drag brake together with over-center valve supplied
- Rotation of winch** : Wire rope shall be under-wound orientation only
- Drum barrel diameter** : 114 mm (4.5")
- Drum flange diameter** : 252 mm (9.9")
- Distance between flanges** : 255 mm (10")
- Mounting bolts pattern** : 303.5 x 114 mm (12.0" x 4.5")
368.5 x 171.2 mm (14.5" x 6.7")
- Wire rope recommended** : 12 mm (1/2") diameter, 1,960 N/mm² grade
39 m (128'), a minimum breaking strength of 100.5 KN (22,552 lbf) is required.
- Winch weight** : 71 kg / 156.5 lb
- Gross weight** : 87 kg / 191.8 lb
- Box dimension** : 715 x 415 x 311 mm (28.1" x 16.3" x 12.2")

PERFORMANCE DATA

Line Pull and Rope Capacity			Line Speed
Layer of Wire Rope	Pull by Layer, kg / lb	Total Rope on the Drum, m / ft	at 60 l/min (15.9 g/min) mpn / fpm
1 st	5,440 / 12,000	8.2 / 26.9	10 / 33
2 nd	4,570 / 10,075	18 / 59.1	11.6 / 38.1
3 rd	3,939 / 8,684	29.3 / 96.1	13.5 / 44.3
4 th	3,462 / 7,632	39 / 128	15.4 / 50.5

DIMENSION mm/in**HV-10 Hydraulic Recovery Winch**

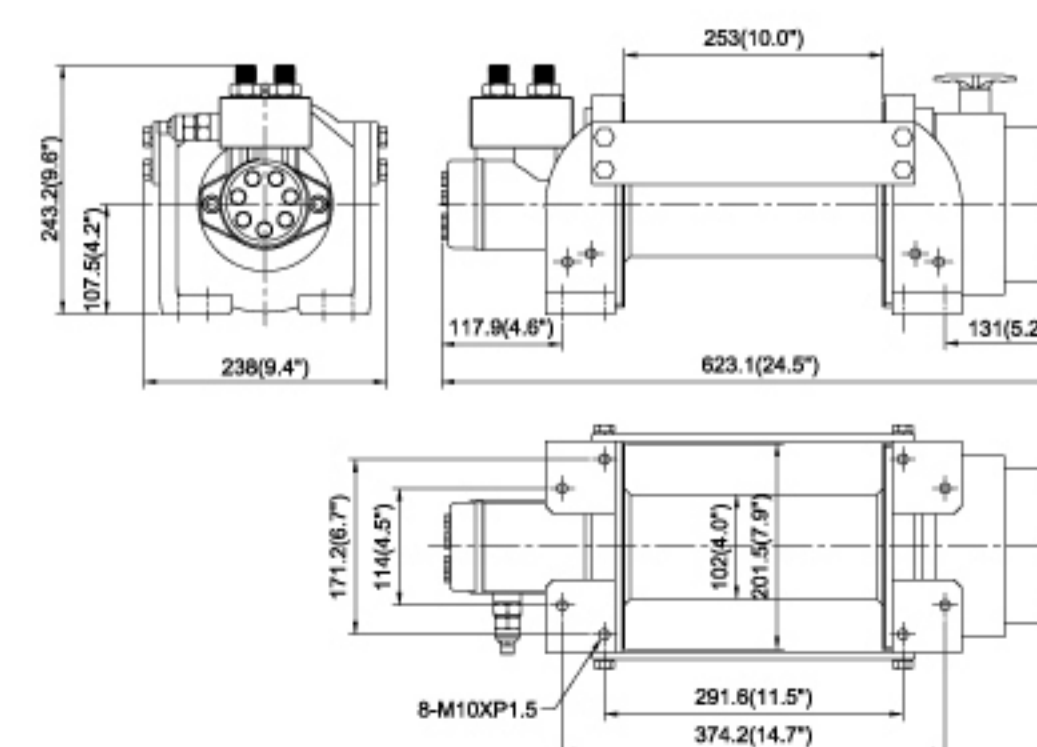
- Rated Line Pull: **4,535 kg / 10,000 lb** (SAE J706 rating)
4,300 kg (EN 14492-1 rating)
- Part Number: **PN 682546** Std. drum
PN 683129 Std. drum (Clutch in left side)
- Meet SAE J706, CE Machinery Directive 2006/42/EC,
and EN 14492-1:2006 Power Driven Winches

SPECIFICATIONS :

- Line speed (at 1st layer of rope)** : 14 mpm at 60 l/min (46 fpm at 15.9 g/min)
- Operation pressure** : 150 bar / 2,175 psi
- Max oil flow** : 60 l/min (15.9 g/min)
- Hydraulic motor** : 97.3 cm³ / rev (5.9 in³ / rev)
- Gear ratio** : 2-stage planetary gear 16:1
- Winch construction** : Aluminum die cast housings with steel drum
- Clutch (Freespooling)** : Rotating ring gear
- Brake** : Spring applied drag brake together with over-center valve supplied
- Rotation of winch** : Wire rope shall be under-wound orientation only
- Drum barrel diameter** : 102 mm (4.0")
- Drum flange diameter** : 201.5 mm (7.9")
- Distance between flanges** : 253 mm (10")
- Mounting bolts pattern** : 291.6 x 171.2 mm (11.5" x 6.7")
374.2 x 114 mm (14.7" x 4.5")
- Wire rope recommended** : 11 mm (7/16") diameter, 1,960 N/mm² grade
27 m (89'), a minimum breaking strength of 84.4 KN (18,939 lbf) is required
- Winch weight** : 37 kg / 81.4 lb
- Gross weight** : 46.6 kg / 102.5 lb
- Box dimension** : 665 x 370 x 285 mm (26.2" x 14.6" x 11.2")

PERFORMANCE DATA

Line Pull and Rope Capacity			Line Speed
Layer of Wire Rope	Pull by Layer, kg / lb	Total Rope on the Drum, m / ft	at 60 l/min (15.9 g/min) mpn / fpm
1 st	4,535 / 10,000	8 / 26.2	14 / 46
2 nd	3,796 / 8,369	17.5 / 57.4	16.3 / 53.5
3 rd	3,264 / 7,196	27 / 89	19 / 62.3

DIMENSION mm/in**HV-8 Hydraulic Recovery Winch**

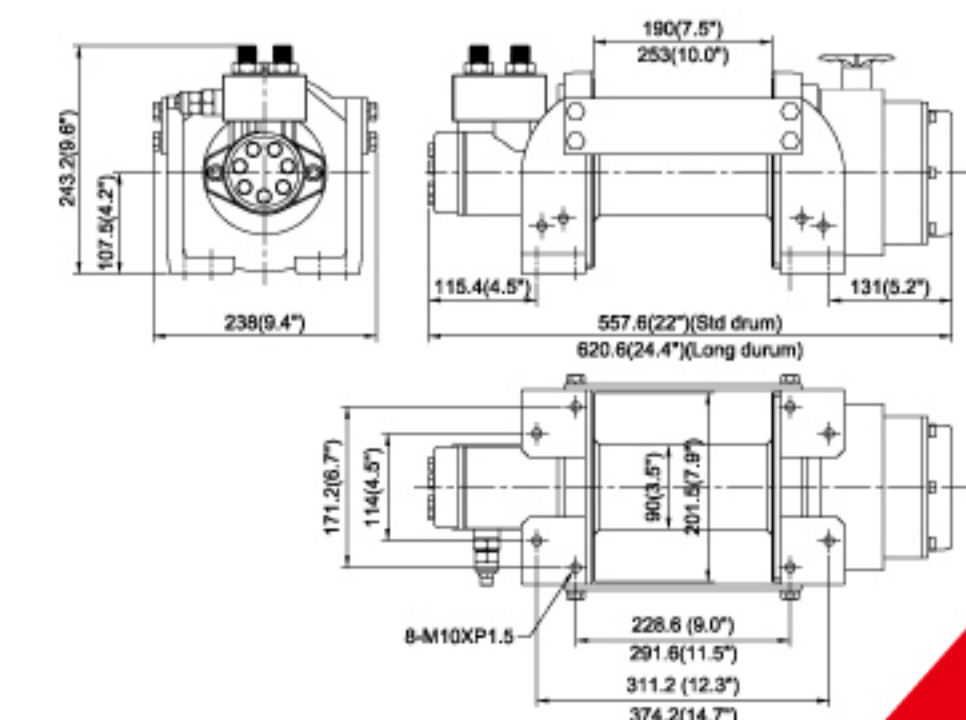
- Rated Line Pull: **3,630 kg / 8,000 lb** (SAE J706 rating)
3,560 kg (EN 14492-1 rating)
- Part Number: **PN 680816** Std. drum
PN 681091 Long drum
PN 681123 Std. drum (Clutch in left side)
PN 681347 Long drum (Clutch in left side)
- Meet SAE J706, CE Machinery Directive 2006/42/EC,
and EN 14492-1:2006 Power Driven Winches

SPECIFICATIONS :

- Line speed (at 1st layer of rope)** : 15 mpm at 60 l/min (49 fpm at 15.9 g/min)
- Operation pressure** : 150 bar / 2,175 psi
- Max oil flow** : 60 l/min (15.9 g/min)
- Hydraulic motor** : 77.8 cm³ / rev (4.7 in³ / rev)
- Gear ratio** : 2-stage planetary gear 16:1
- Winch construction** : Aluminum die cast housings with steel drum
- Clutch (Freespooling)** : Rotating ring gear
- Brake** : Spring applied drag brake together with over-center valve supplied
- Rotation of winch** : Wire rope shall be under-wound orientation only
- Drum barrel diameter** : 90 mm (3.5")
- Drum flange diameter** : 201.5 mm (7.9")
- Distance between flanges** : 190 mm (7.5") - Std. drum / 253 mm (10") - Long drum
- Mounting bolts pattern** :
Std. drum - 228.6 x 171.2 mm (9.0" x 6.7") ; 311.2 x 114 mm (12.3" x 4.5")
Long drum - 291.6 x 171.2 mm (11.5" x 6.7") ; 374.2 x 114 mm (14.7" x 4.5")
- Wire rope recommended** : 10 mm (3/8") diameter, 1,960 N/mm² grade
30 m (98') for Std. drum ; 40 m (131') for Long drum, a minimum breaking strength of 69.8 KN (15,663 lbf) is required.
- Winch weight** : 35.5 kg / 78.1 lb (Std. drum) ; 37.5 kg / 82.7 lb (Long drum)
- Gross weight** : 43.3 kg / 95.3 lb (Std. drum) ; 45.3 kg / 99.9 lb (Long drum)
- Box dimension** : 600 x 370 x 285 mm (23.6" x 14.6" x 11.2") - Std. drum
665 x 370 x 285 mm (26.5" x 14.6" x 11.2") - Long drum

PERFORMANCE DATA

Line Pull and Rope Capacity			Line Speed	
Layer of Wire Rope	Pull by Layer, kg / lb	Total Rope on the Drum, m / ft		at 60 l/min (15.9 g/min)
		Std. drum	Long drum	mpn / fpm
1 st	3,630 / 8,000	5.8 / 19	7.8 / 25.6	15 / 49
2 nd	3,025 / 6,669	12.8 / 42	17.1 / 56.1	18.2 / 59.7
3 rd	2,593 / 5,717	20.9 / 68.6	28 / 91.9	21.2 / 69.8
4 th	2,269 / 5,002	30 / 98	40 / 131	24.2 / 79.4

DIMENSION mm/in



HYDRAULIC WORM GEAR WINCH

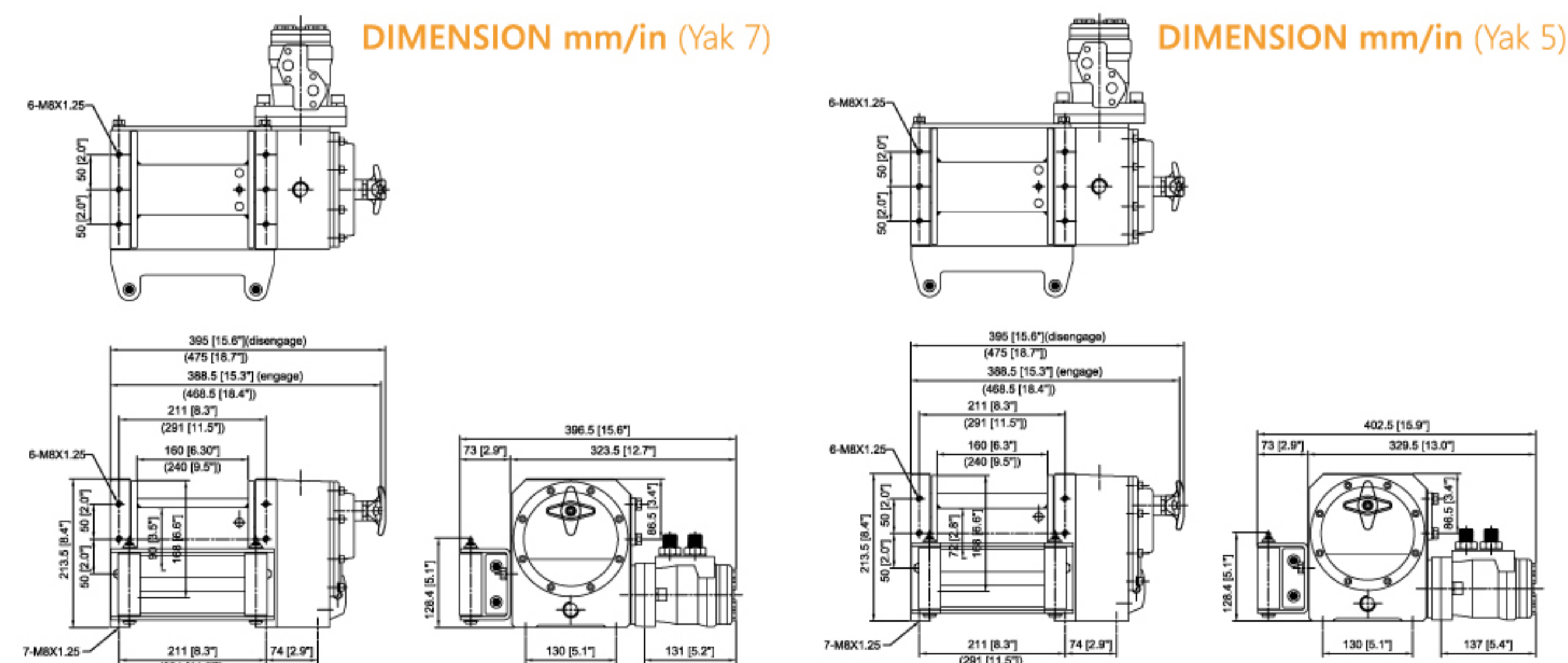
Yak Series

- Powered by an onboard hydraulic pump or PTO
- Fast and variable recovery speeds for high working rate
- High efficient and constant-operating torque motor
- Irreversible single stage worm gear provides instant braking and slip free operation
- An ergonomic T-handle for rapid wire rope payout
- Heavy duty roller fairlead with grease zerk fittings
- EN 14492-1 supported: 10:1 D/d ratio, 2:1 wire rope strength and 1.5d freeboard for severe duty car and commercial recovery
- Standard Compliance: CE Machinery Directive 2006/42/EC, EN 14492-1:2006 Power Driven Winches and SAE J706

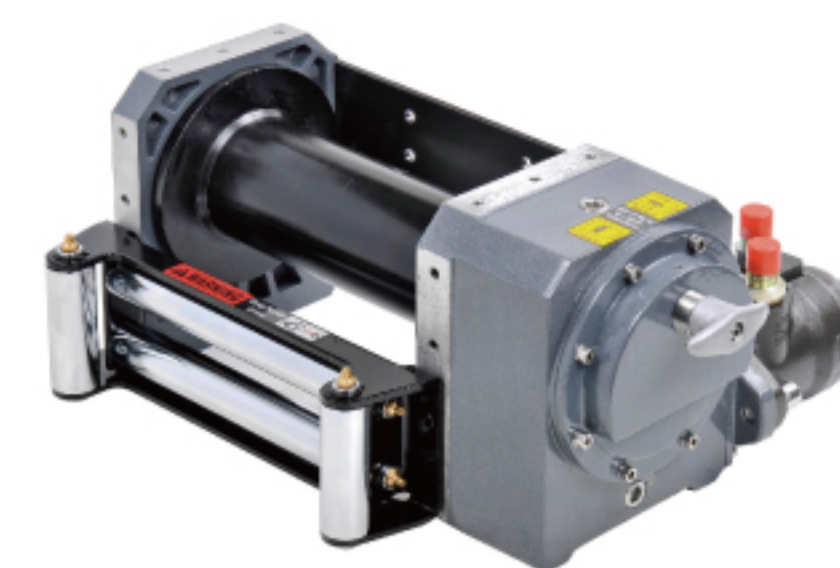


Compliant with EN 14492-1 requirements for recovery winch:

- * The working coefficient for the first rope layer on the drum shall be at least 2..
- * The D/d ratio to the center of the rope shall be at least 10 for the drum.
- * Drum freeboard shall be at least 1.5 x rope diameter.



Yak 7 Hydraulic Worm Gear Winch



- Rated Line Pull: **3,175 kg / 7,000 lb (SAE J706 rating)**
3,200 kg (EN 14492-1 rating)
- Part Number: **PN 681260** Std. drum
PN 681266 Long drum
- Meet SAE J706, CE Machinery Directive 2006/42/EC, and EN 14492-1:2006 Power Driven Winches.

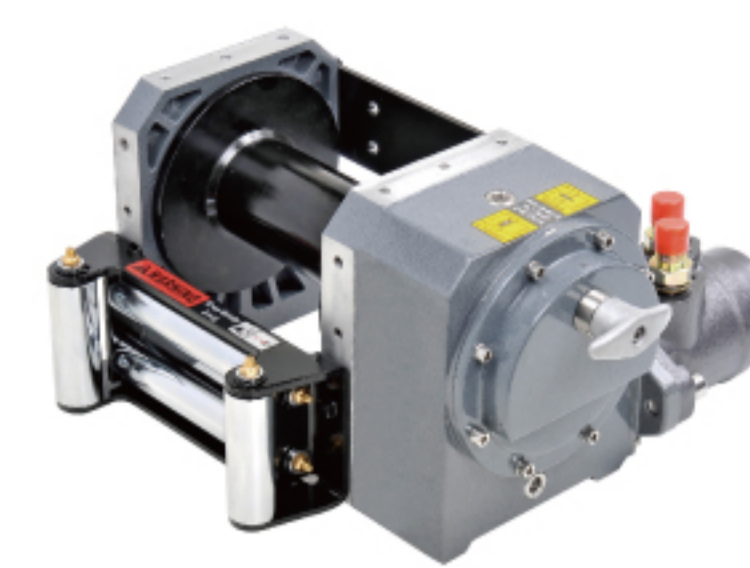
SPECIFICATIONS :

- **Line speed (at 1st layer of rope)** : 5.2 mpm at 40 l/min (17.1 fpm at 10.6 g/min)
- **Operation pressure** : 110 bar / 1,595 psi
- **Max oil flow** : 40 l/min (10.6g /min)
- **Hydraulic motor** : 48.6 cm³ / rev (3.0 in³ / rev)
- **Gear ratio** : 1-stage worm gear 50:1
- **Winch construction** : Aluminum die cast housings with steel drum
- **Clutch (Freespooling)** : Worm gear disengaged
- **Brake** : Irreversible worm gear
- **Rotation of winch** : Wire rope shall be under-wound orientation only
- **Drum barrel diameter** : 90 mm (3.5")
- **Drum flange diameter** : 168 mm (6.6")
- **Distance between flanges** : 160 mm (6.3") - Std. drum
240 mm (9.5") - Long drum
- **Mounting bolts pattern** : 130 x 211 mm (5.1" x 8.3") - Std. drum
130 x 291 mm (5.1" x 11.5") - Long drum
- **Wire rope recommended** :
* 10 mm x 10.7 m for Std. drum and 16.2 m for Long drum, 1,960N/mm² grade with a minimum breaking strength of 69.8 KN required for EN 14492-1 rating
* 3/8" x 57.4' for Std. drum and 87.3' for Long drum, EIPS grade with a minimum breaking strength of 15,663 lbf required for SAE J706 rating
- **Winch weight** : 29 kg / 63.9 lb (Std. drum) ; 33 kg / 72.8 lb (Long drum)
- **Gross weight** : 33 kg / 72.8 lb (Std. drum) ; 37 kg / 81.6 lb (Long drum)
- **Box dimension** : 417 x 386 x 256 mm (16.4" x 15.2" x 10.1") - Std. drum
497 x 386 x 256 mm (19.6" x 15.2" x 10.1") - Long drum

PERFORMANCE DATA

Layer of Wire Rope	Line Pull and Rope Capacity	Line Speed		
		Pull by Layer, kg / lb	Total Rope on the Drum, m / ft	at 40 l/min (10.6 g/min) mpn / fpm
1 st	3,175 / 7,000	4.9 / 16.1	7.4 / 24.3	5.2 / 17.1
2 nd	2,646 / 5,833	10.7 / 35.1	16.2 / 53.1	6.2 / 20.3
3 rd	2,268 / 5,000	17.5 / 57.4	26.6 / 87.3	7.2 / 23.6

Yak 5 Hydraulic Worm Gear Winch



- Rated Line Pull: **2,268 kg / 5,000 lb (SAE J706 rating)**
2,200 kg (EN 14492-1 rating)
- Part Number: **PN 681330** Std. drum
PN 681350 Long drum
- Meet SAE J706, CE Machinery Directive 2006/42/EC, and EN 14492-1:2006 Power Driven Winches

SPECIFICATIONS :

- **Line speed (at 1st layer of rope)** : 4.4 mpm at 45 l/min (14.4 fpm at 11.9 g/min)
- **Operation pressure** : 60 bar / 870 psi
- **Max oil flow** : 45 l/min (11.9 g/min)
- **Hydraulic motor** : 51.7 cm³ / rev (3.2 in³ / rev)
- **Gear ratio** : 1-stage worm gear 50:1
- **Winch construction** : Aluminum die cast housings with steel drum
- **Clutch (Freespooling)** : Worm gear disengaged
- **Brake** : Irreversible worm gear
- **Rotation of winch** : Wire rope shall be under-wound orientation only
- **Drum barrel diameter** : 72 mm (2.8")
- **Drum flange diameter** : 168 mm (6.6")
- **Distance between flanges** : 160 mm (6.3") - Std. drum
240 mm (9.5") - Long drum
- **Mounting bolts pattern** : 130 x 211 mm (5.1" x 8.3") - Std. drum
130 x 291 mm (5.1" x 11.5") - Long drum
- **Wire rope recommended** :
* 8 mm x 25.5 m for Std. drum and 38.6 m for Long drum, 1,960N/mm² grade with a minimum breaking strength of 44.7 KN required for EN 14492-1 rating
* 5/16" x 112.5' for Std. drum and 170.3' for Long drum, EIPS grade with a minimum breaking strength of 10,030 lbf required for SAE J706 rating
- **Winch weight** : 26 kg / 59.3 lb (Std. drum) ; 29 kg / 63.9 lb (Long drum)
- **Gross weight** : 30 kg / 66.1 lb (Std. drum) ; 33 kg / 72.8 lb (Long drum)
- **Box dimension** : 417 x 386 x 256 mm (16.4" x 15.2" x 10.1") - Std. drum
497 x 386 x 256 mm (19.6" x 15.2" x 10.1") - Long drum

PERFORMANCE DATA

Layer of Wire Rope	Line Pull and Rope Capacity	Line Speed		
		Pull by Layer, kg / lb	Total Rope on the Drum, m / ft	at 45 l/min (11.9 g/min) mpn / fpm
1 st	2,268 / 5,000	4.9 / 16.1	7.4 / 24.3	4.4 / 14.4
2 nd	1,890 / 4,167	10.8 / 35.4	16.2 / 53.5	5.3 / 17.4
3 rd	1,620 / 3,571	17.6 / 57.7	26.7 / 87.6	6.1 / 20
4 th	1,418 / 3,126	25.5 / 83.7	38.6 / 126.6	7 / 23
5 th	1,260 / 2,778	34.3 / 112.5	51.9 / 170.3	7.9 / 25.9

ELECTRIC RECOVERY WINCH

COMEUP, as an international brand of winch manufacturer, is aiming to provide a superior product that is inherently safe to operate in all conditions by all users. COMEUP further assures that its industrial winches comply with all European Standards and Directives including but not limited to EN 14492-1, the Machinery Safety regulations and all current Health and Safety regulations. The lastest COMEUP Rhino Series winch is designed to comply the above regulation requirements that ensures maximum performance in the toughest environment and is ideal for commercial, industrial and severe duty application by its features below



FEATURES

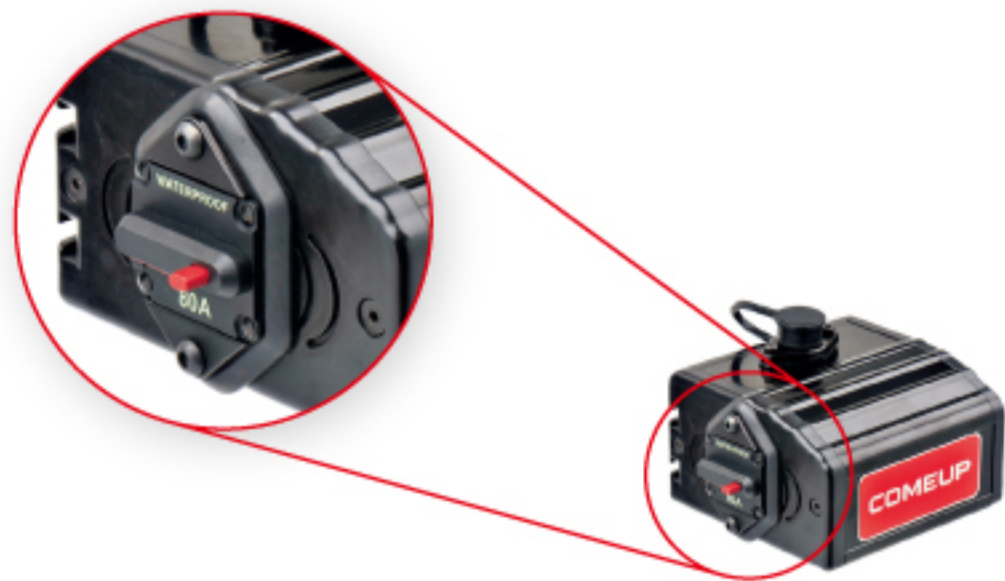
- Reliable electric winch for commercial, industrial and severe duty applications
- 10 equally positioned pin holes with a ergonomic T-handle make end housing may be rotated in 36 degree increments
- Hardened steel, 3-stage planetary gear train for efficient and reliable operation
- Water-proof remote control with thermometric LED indicator alerts when the motor is over-heated
- U.S. Germany, U.K. France, etc patented mechanical cone brake holds full load
- Over-load protector build-in the control box prevents the overloading of the winch
- Submersible sealed contactor handles high amps and allows higher duty cycle
- Standard Compliance: CE Machinery Directive 2006/42/EC, CE EMC Directive 2004/108/EC, EN 14492-1:2006 Power Driven Winches and SAE J706

Compliant with EN 14492-1 requirements for recovery winch:

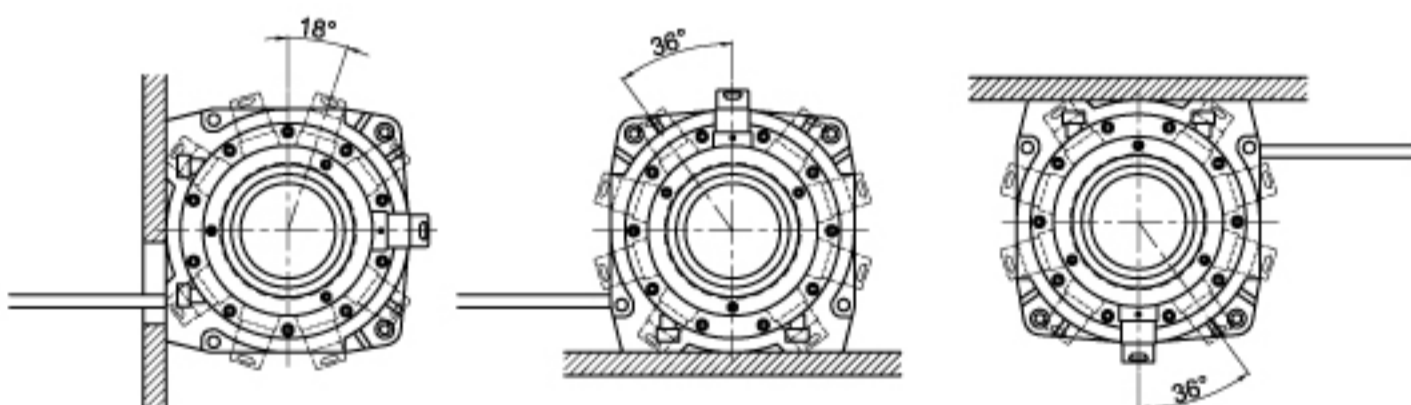
- The working coefficient for the first rope layer on the drum shall be at least 2
- The D/d ratio to the center of the rope shall be at least 10 for the drum.
- Drum freeboard shall be at least 1.5 x rope diameter

OLP (Over-Load Protector) function

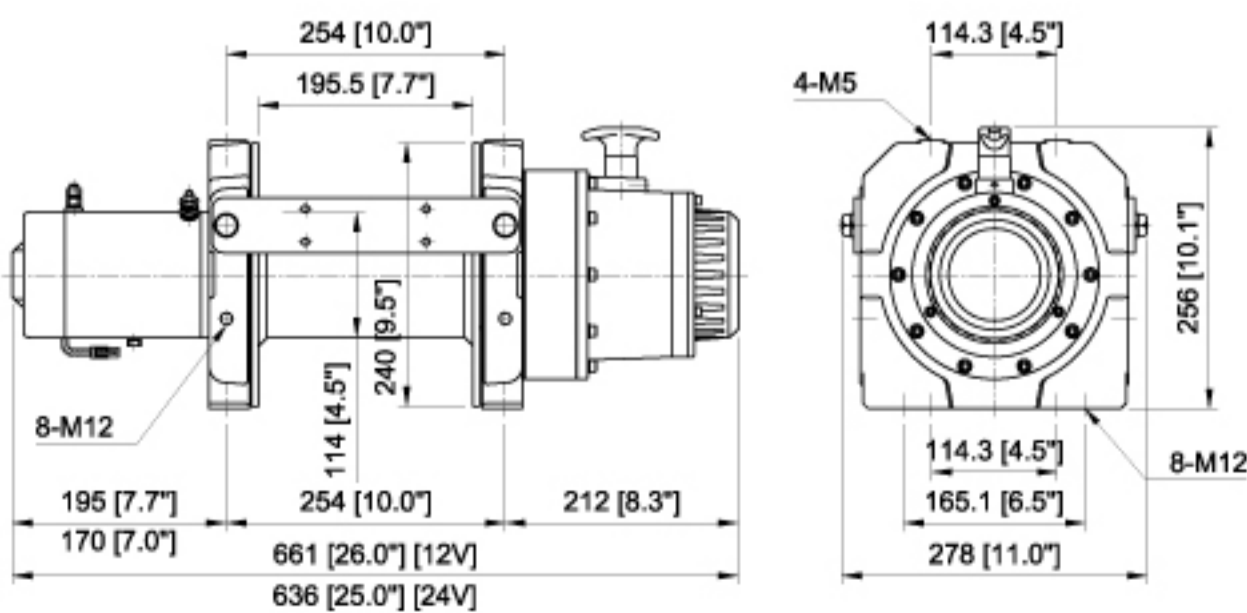
The over-load protector built-in the control box designs to prevent overloading of the winch



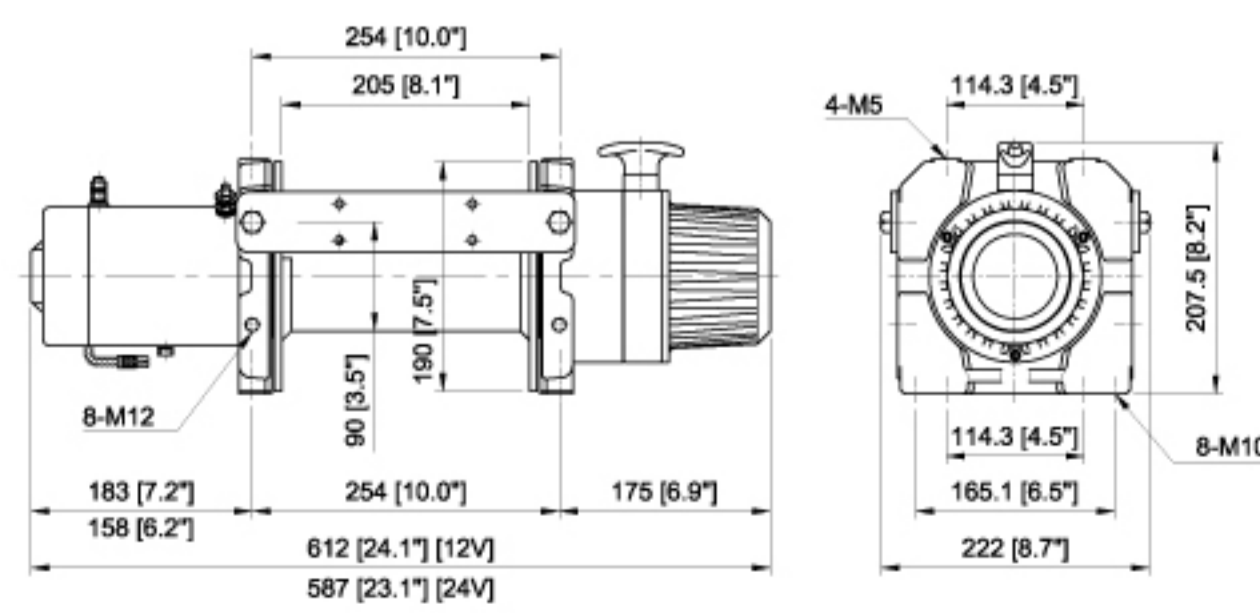
10 equally positioned pin holes ensure seamless clutch transmission and make it easily rotate by 36° Increments.



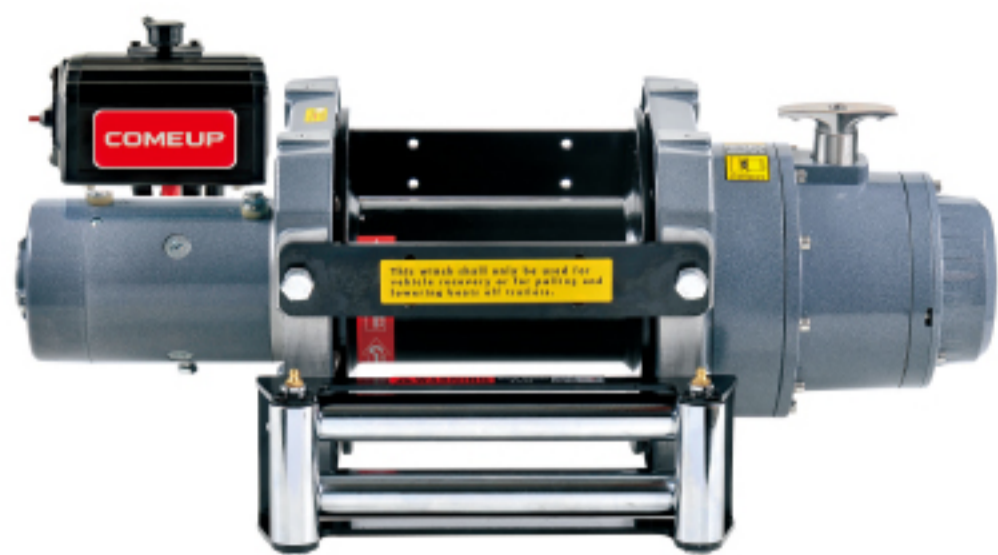
DIMENSION mm/in (Rhino 12)



DIMENSION mm/in (Rhino 8)



Rhino 12 Electric Recovery Winch



- Rated Line Pull: **5,440 kg / 12,000 lb (SAE J706 rating)**
5,100 kg (EN 14492-1 rating)
- Part Number: **PN 851212** 12V DC Motor
PN 851224 24V DC Motor
- Meet SAE J706, CE Machinery Directive 2006/42/EC, and EN 14492-1:2006 Power Driven Winches.

SPECIFICATIONS :

- **Motor** : 4,180 w / 5.6 hp 12V series wound
2,690 w / 3.6 hp 24V series wound
- **Gear ratio** : 3-stage planetary 315:1
- **Clutch (freespooling)** : Rotating ring gear
- **Brake (outside the drum)** : Automatic, full load CBS (Cone Brake Structure)
- **Winch construction** : Aluminum die cast housings with steel drum
- **Drum size** : 114 x 195.5 mm (4.5" x 7.7")
- **Rotation of winch** : Wire rope shall be under-wound orientation only
- **Control** : Weather proof remote with thermometric indicator LED and 5 m (17') cord
- **Mounting bolts pattern** : 254 x 114 mm (10" x 4.5")
254 x 165 mm (10" x 6.5")
- **Wire rope recommended** :
 - * 12 mm x 21.4 m, 1,960N/mm² grade with a minimum breaking strength of 100.5 KN required for EN 14492-1 rating
 - * 1/2" x 100', EIPS grade with a minimum breaking strength of 22,552 lbf required for SAE J706 rating
- **Winch weight** : 47 kg / 104 lb
- **Gross weight** : 61 kg / 134 lb
- **Box dimension** : 693 x 313 x 473 mm (27.3" x 12.3" x 18.6")

PERFORMANCE DATA

Line Pull and Rope Capacity

Layer of Wire Rope	Pull by Layer, kg / lb	Total Rope on the Drum, m / ft
1 st	5,440 / 12,000	5.9 / 19.4
2 nd	4,534 / 9,996	13 / 42.7
3 rd	3,885 / 8,565	21.4 / 70
4 th	3,399 / 7,494	30.5 / 100

Line Speed and Amp. Draw (1st layer of wire rope on the drum)

Line Pull kg / lb	Line Speed mpm / fpm	Amp. Draw	
		12V	24V
No Load	10 / 32.8	40	35
1,814 / 4,000	4.4 / 14.4	140	110
3,630 / 8,000	3.5 / 11.5	280	210
5,535 / 10,000	1.5 / 5	350	260
5,440 / 12,000	1.3 / 4.3	420	310

Rhino 8 Electric Recovery Winch



- Rated Line Pull: **3,630 kg / 8,000 lb (SAE J706 rating)**
3,560 kg (EN 14492-1 rating)
- Part Number: **PN 850812** 12V DC Motor
PN 850824 24V DC Motor
- Meet SAE J706, CE Machinery Directive 2006/42/EC, and EN 14492-1:2006 Power Driven Winches.

SPECIFICATIONS :

- **Motor** : 3,430 w / 4.6 hp 12V series wound
1,940 w / 2.6 hp 24V series wound
- **Gear ratio** : 3-stage planetary 211:1
- **Clutch (freespooling)** : Rotating ring gear
- **Brake (outside the drum)** : Automatic, full load CBS (Cone Brake Structure)
- **Winch construction** : Aluminum die cast housings with steel drum
- **Drum size** : 90 x 205 mm (3.5" x 8.1")
- **Rotation of winch** : Wire rope shall be under-wound orientation only
- **Control** : Weather proof remote with thermometric indicator LED and 5 m (17') cord
- **Mounting bolts pattern** : 254 x 114 mm (10" x 4.5")
254 x 165 mm (10" x 6.5")
- **Wire rope recommended** :
 - * 10 mm x 22.6 m, 1,960N/mm² grade with a minimum breaking strength of 69.8 KN required for EN 14492-1 rating
 - * 3/8" x 100', EIPS grade with a minimum breaking strength of 15,663 lbf required for SAE J706 rating
- **Winch weight** : 31 kg / 68.3 lb
- **Gross weight** : 47 kg / 104 lb
- **Box dimension** : 650 x 260 x 440 mm (25.6" x 10.2" x 17.3")

PERFORMANCE DATA

Line Pull and Rope Capacity

Layer of Wire Rope	Pull by Layer, kg / lb	Total Rope on the Drum, m / ft
1 st	3,630 / 8,000	6.3 / 20.7
2 nd	3,025 / 6,669	13.8 / 45.3
3 rd	2,593 / 5,717	22.6 / 74
4 th	2,269 / 5,002	30.5 / 100

Line Speed and Amp. Draw (1st layer of wire rope on the drum)

Line Pull kg / lb	Line Speed mpm / fpm	Amp. Draw	
		12V	24V
No Load	9 / 29.5	45	30
907 / 2,000	3 / 10	90	60
1,814 / 4,000	1.5 / 5	180	120
2,722 / 6,000	1 / 3.3	260	180
3,630 / 8,000	0.7 / 2.3	340	230

Wolf 12.0 Electric Worm Gear Winch



- Rated Line Pull: **5,443 kg / 12,000 lb**
- Part Number: **PN 782478** 12V DC motor
PN 783415 24V DC motor
- Meet SAE J706, CE Machinery Directive 2006/42/EC

SPECIFICATIONS :

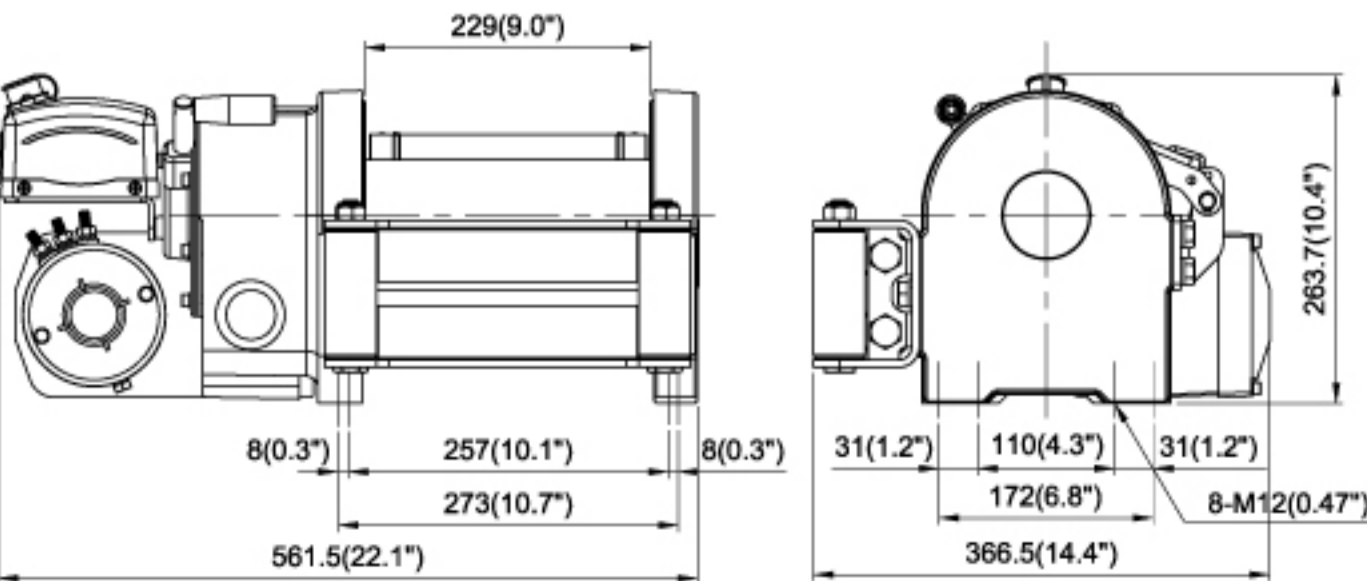
- **Motor** : 3,430 w / 4.6 hp 12V series wound
2,240 w / 3.0 hp 24V series wound
- **Gear ratio** : 2-stage spur gear PLUS worm gear 424:1
- **Clutch (freespooling)** : Mechanism lever
- **Brake** : Irreversible worm gear brake PLUS mechanism ratchets wheel brake
- **Drum size** : 89 x 229 mm (3.5" x 9")
- **Control** : Handheld pendant switch remote control
- **Rope type** : Galvanized aircraft A7 x 19
- **Rope size** : 9.5 mm x 30.5 m (3/8" x 100')
- **Mounting bolts pattern** : 273 x 110 mm (10.7" x 4.3")
257 x 172 mm (10.1 x 6.8")
- **Winch weight** : 41 kg / 90.4 lb
- **Gross weight** : 51 kg / 112.5 lb
- **Box dimension** : 610 x 427 x 350 mm (24" x 16.8" x 13.8")

PERFORMANCE DATA

Line Pull and Rope Capacity		
Layer of Wire Rope	Pull by Layer, kg / lb	Total Rope on the Drum, m / ft
1 st	5,443 / 12,000	7.3 / 24
2 nd	4,563 / 10,060	16 / 52.6
3 rd	3,928 / 8,659	26.1 / 85.8
4 th	3,448 / 7,601	30.5 / 100

Line Speed and Amp. Draw (1 st layer of wire rope on the drum)			
Line Pull kg / lb	Line Speed mpm / fpm	Amp. Draw	
		12V	24V
No Load	6.2 / 20.3	70	40
2,722 / 6,000	2.7 / 8.9	180	85
3,630 / 8,000	1.7 / 5.6	270	120
4,535 / 10,000	1.4 / 4.6	310	150
5,443 / 12,000	1 / 3.3	350	190

DIMENSION mm/in (Wolf 12.0 / 8.5)



Wolf 8.5 Electric Worm Gear Winch



- Rated Line Pull: **3,856 kg / 8,500 lb**
- Part Number: **PN 780254** 12V DC motor
PN 780988 24V DC motor
- Meet SAE J706, CE Machinery Directive 2006/42/EC

SPECIFICATIONS :

- **Motor** : 3,430 w / 4.6 hp 12V series wound
1,940 w / 2.6 hp 24V series wound
- **Gear ratio** : 2-stage spur gear PLUS worm gear 228.9:1
- **Clutch (freespooling)** : Mechanism lever
- **Brake** : Irreversible worm gear brake PLUS mechanism ratchets wheel brake
- **Drum size** : 82 x 229 mm (3.2" x 9")
- **Control** : Handheld pendant switch remote control
- **Rope type** : Galvanized aircraft A7 x 19
- **Rope size** : 8.0 mm x 45 m (5/16" x 150')
- **Mounting bolts pattern** : 273 x 110 mm (10.7" x 4.3")
257 x 172 mm (10.1 x 6.8")
- **Winch weight** : 40 kg / 88.2 lb
- **Gross weight** : 51 kg / 112.5 lb
- **Box dimension** : 610 x 427 x 350 mm (24" x 16.8" x 13.8")

PERFORMANCE DATA

Line Pull and Rope Capacity		
Layer of Wire Rope	Pull by Layer, kg / lb	Total Rope on the Drum, m / ft
1 st	3,856 / 8,500	8 / 26.4
2 nd	3,279 / 7,229	17.5 / 57.4
3 rd	2,853 / 6,289	28.4 / 93.1
4 th	2,524 / 5,566	40.7 / 133.4
5 th	2,264 / 4,991	45 / 150

Line Speed and Amp. Draw (1 st layer of wire rope on the drum)			
Line Pull kg / lb	Line Speed mpm / fpm	Amp. Draw	
		12V	24V
No Load	10.6 / 34.8	55	40
907 / 2,000	4.3 / 14.1	120	70
1,814 / 4,000	3 / 9.8	200	100
2,722 / 6,000	2.4 / 7.9	255	130
3,630 / 8,000	2 / 6.6	320	160
3,856 / 8,500	1.8 / 5.9	350	170

HEAVY DUTY HOIST

COMEUP heavy duty hoist provides an answer to the health and safety recommendations for manual lifting. They come with a U.S. Germany, U.K, France, etc. patented automatic, full load CBS (Cone Brake Structure) PLUS an auxiliary inverted current brake hold full load. The series wound motor with high torque and fast line speed and high efficiency 3-stage planetary gear train makes effortless lifting of heavy-weights. It helps you work more efficiently.

- Heavy duty series wound motor gives high torque and fast line speed.
- Detachable control box mounted anywhere on the vehicle.
- High efficiency 3-stage planetary gear train for greater pulling force.
- The U.S. Germany, U.K., France, etc patents of automatic, full load CBS (Cone Brake Structure) PLUS an auxiliary inverted current brake-hold full load without slip.
- In compliance with ANSI B30.5 standard, D/d≥18, and wire rope safety factor ≥ 3.5
- Provide an answer to the health and safety recommendations for manual lifting
- Meet ANSI B30.5 and CE Machinery Directive2006/42/EC

• DHC Series / 3,000 ~ 1,200 lb



DHC-3000 Heavy Duty Hoist

- Rated Line Pull: **1,361 kg / 3,000 lb**
- Part Number: **PN 751516** 12V DC Motor
PN 751680 24V DC Motor

SPECIFICATIONS :

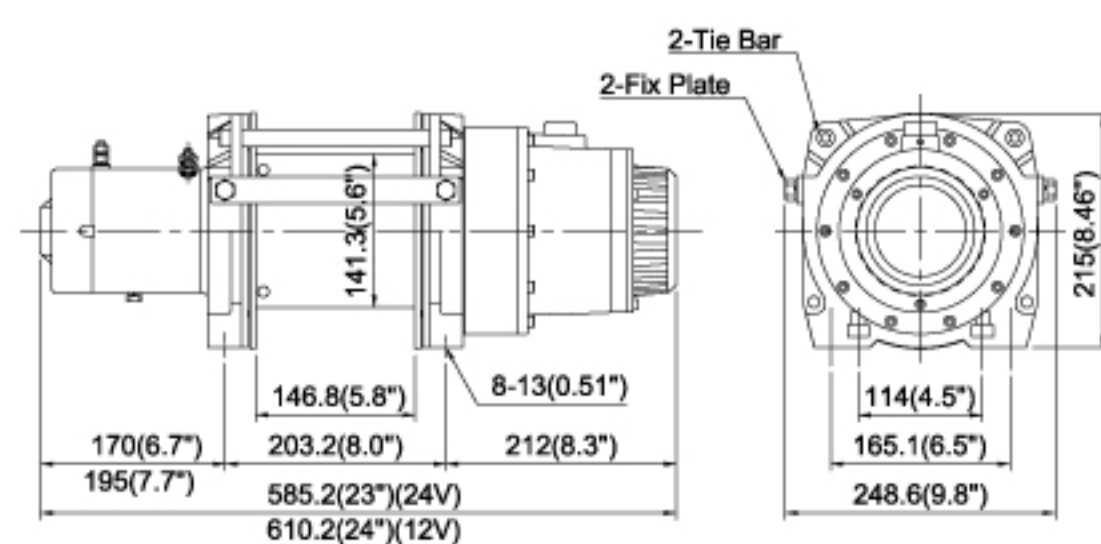
- **Motor** : 4,180 w / 5.6 hp 12V series wound
2,690 w / 3.6 hp 24V series wound
- **Gear ratio** : 3-stage planetary gear 315:1
- **Brake** : Automatic, full load CBS (Cone Brake Structure) PLUS an auxiliary inverted current brake
- **Drum size** : 141.3 x 146.8 mm (5.6" x 5.8")
- **Control** : Handheld pendant switch remote control
- **Rope type** : Galvanized aircraft A7 x 19
- **Rope size** : 8.3 mm x 22.9 m (21/64" x 75')
- **Mounting bolts pattern** : 203.2 x 114 mm (8" x 4.5")
- **Winch weight** : 40 kg / 88 lb
- **Gross weight** : 54.5 kg / 119.7 lb
- **Box dimension** : 620 x 360 x 263 mm (24.4" x 14.2" x 10.4")

PERFORMANCE DATA**Line Pull and Rope Capacity**

Layer of Wire Rope	Pull by Layer, kg / lb	Total Rope on the Drum, m / ft
1 st	1,361 / 3,000	8.1 / 26.6
2 nd	1,225 / 2,701	17.1 / 56.1
3 rd	1,114 / 2,456	22.9 / 75

Line Speed and Amp. Draw (1st layer of wire rope on the drum)

Line Pull kg / lb	Line Speed mpm / fpm	Amp. Draw 12V	Amp. Draw 24V	Percentage Duty Cycle ED%
No Load	11.7 / 38.4	80	50	25
227 / 500	8.8 / 28.9	130	75	23
454 / 1,000	7.6 / 24.9	165	100	20
680 / 1,500	6.5 / 21.3	190	125	18
907 / 2,000	5.6 / 18.4	210	140	15
1,134 / 2,500	4.9 / 16.1	230	155	14
1,361 / 3,000	4.3 / 14.1	250	170	13

DIMENSION mm/in**DHC-2000 Heavy Duty Hoist**

- Rated Line Pull: **907 kg / 2,000 lb**
- Part Number: **PN 751004** 12V DC Motor
PN 751383 24V DC Motor

SPECIFICATIONS :

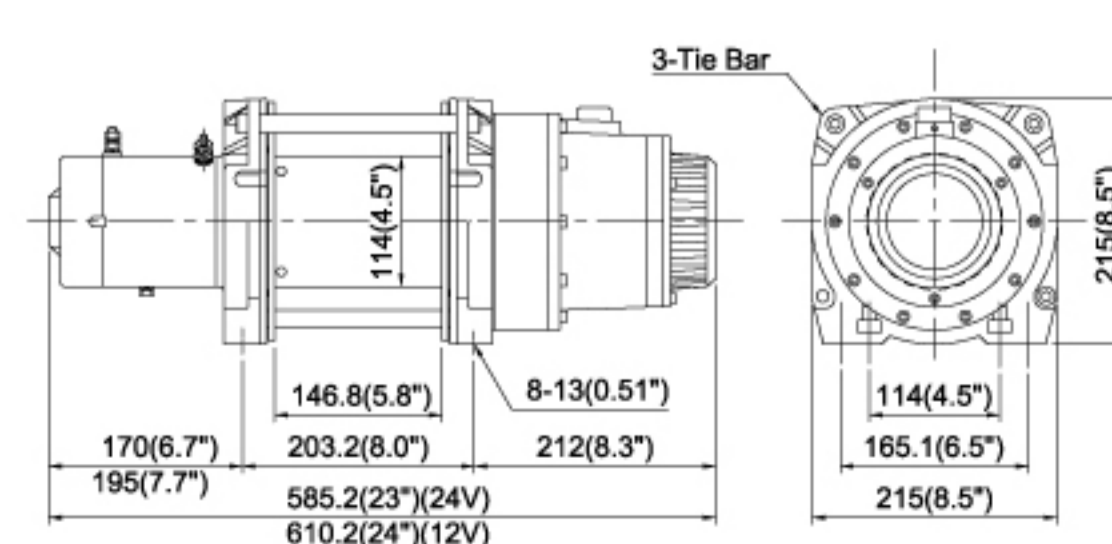
- **Motor** : 4,180 w / 5.6 hp 12V series wound
2,690 w / 3.6 hp 24V series wound
- **Gear ratio** : 3-stage planetary gear 261:1
- **Brake** : Automatic, full load CBS (Cone Brake Structure) PLUS an auxiliary inverted current brake
- **Drum size** : 114 x 146.8 mm (4.5" x 5.8")
- **Control** : Handheld pendant switch remote control
- **Rope type** : Galvanized aircraft A7 x 19
- **Rope size** : 6.3 mm x 30.5 m (1/4" x 100')
- **Mounting bolts pattern** : 203.2 x 114 mm (8" x 4.5")
- **Winch weight** : 37 kg / 81.6 lb
- **Gross weight** : 48 kg / 105.6 lb
- **Box dimension** : 620 x 360 x 263 mm (24.4" x 14.2" x 10.4")

PERFORMANCE DATA**Line Pull and Rope Capacity**

Layer of Wire Rope	Pull by Layer, kg / lb	Total Rope on the Drum, m / ft
1 st	907 / 2,000	8.5 / 27.9
2 nd	820 / 1,808	17.9 / 58.7
3 rd	748 / 1,649	28.2 / 92.5
4 th	688 / 1,517	30.5 / 100

Line Speed and Amp. Draw (1st layer of wire rope on the drum)

Line Pull kg / lb	Line Speed mpm / fpm	Amp. Draw 12V	Amp. Draw 24V	Percentage Duty Cycle ED%
No Load	10.2 / 33.5	75	50	25
227 / 500	7.1 / 23.3	140	80	23
454 / 1,000	6 / 19.7	170	100	20
680 / 1,500	4.9 / 16.1	190	120	18
907 / 2,000	4.2 / 13.8	210	140	15

DIMENSION mm/in**DHC-1600 Heavy Duty Hoist**

- Rated Line Pull: **726 kg / 1,600 lb**
- Part Number: **PN 750937** 12V DC Motor
PN 750985 24V DC Motor

SPECIFICATIONS :

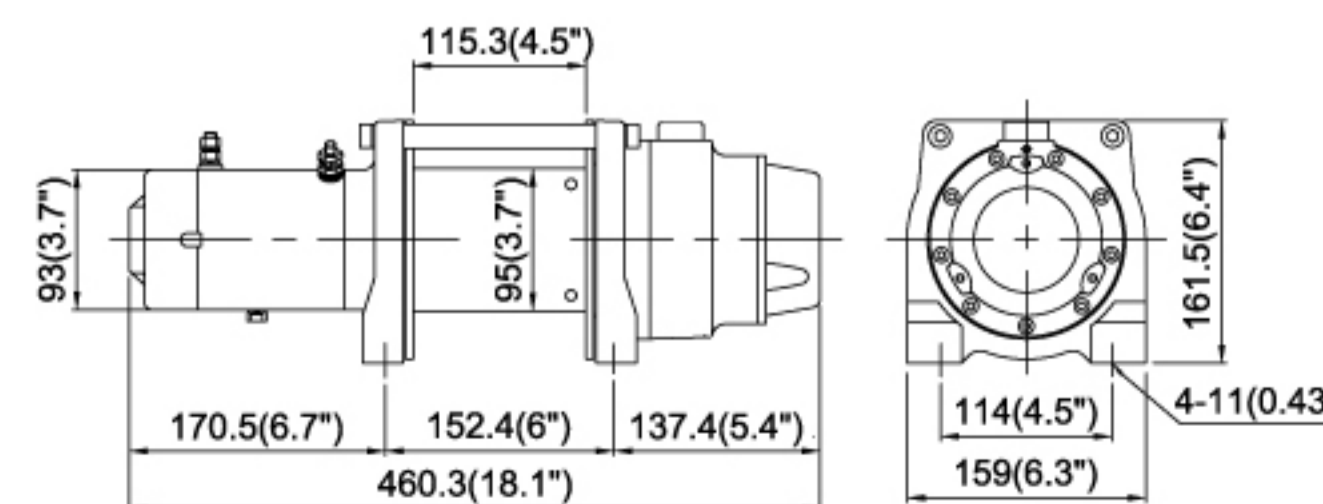
- **Motor** : 900 w / 1.2 hp 12V series wound
600 w / 0.8 hp 24V series wound
- **Gear ratio** : 3-stage planetary gear 216:1
- **Brake** : Automatic, full load CBS (Cone Brake Structure) PLUS an auxiliary inverted current brake
- **Drum size** : 95 x 115.3 mm (3.8" x 4.5")
- **Control** : Handheld pendant switch remote control
- **Rope type** : Galvanized aircraft A7 x 19
- **Rope size** : 5.5 mm x 19.8 m (7/32" x 65')
- **Mounting bolts pattern** : 152.4 x 114 mm (6" x 4.5")
- **Winch weight** : 15 kg / 33 lb
- **Gross weight** : 24 kg / 52.8 lb
- **Box dimension** : 490 x 287 x 193 mm (17.3" x 11.3" x 7.6")

PERFORMANCE DATA**Line Pull and Rope Capacity**

Layer of Wire Rope	Pull by Layer, kg / lb	Total Rope on the Drum, m / ft
1 st	726 / 1,600	6.3 / 20.7
2 nd	653 / 1,440	13.4 / 44
3 rd	594 / 1,309	19.8 / 65

Line Speed and Amp. Draw (1st layer of wire rope on the drum)

Line Pull kg / lb	Line Speed mpm / fpm	Amp. Draw 12V	Amp. Draw 24V	Percentage Duty Cycle ED%
No Load	14 / 45.9	60	35	25
113 / 250	10.6 / 34.8	80	60	23
227 / 500	8.9 / 29.2	110	80	20
340 / 750	7.7 / 25.3	135	90	18
454 / 1,000	6.2 / 20.3	160	100	15
544 / 1,200	5 / 16.4	180	110	13
726 / 1,600	4.5 / 14.8	200	120	11

DIMENSION mm/in**DHC-1200 Heavy Duty Hoist**

- Rated Line Pull: **544 kg / 1,200 lb**
- Part Number: **PN 750552** 12V DC Motor
PN 750566 24V DC Motor

SPECIFICATIONS :

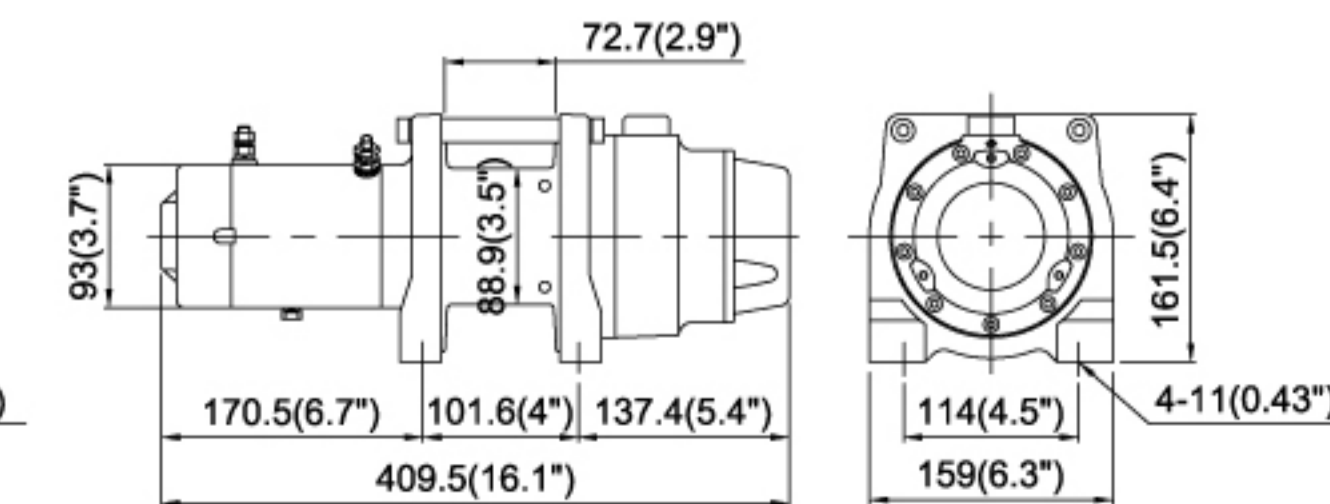
- **Motor** : 900 w / 1.2 hp 12V series wound
600 w / 0.8 hp 24V series wound
- **Gear ratio** : 3-stage planetary gear 216:1
- **Brake** : Automatic, full load CBS (Cone Brake Structure) PLUS an auxiliary inverted current brake
- **Drum size** : 89 x 72.7 mm (3.5" x 2.9")
- **Control** : Handheld pendant switch remote control
- **Rope type** : Galvanized aircraft A7 x 19
- **Rope size** : 4.8 mm x 18.3 m (3/16" x 60')
- **Mounting bolts pattern** : 101.6 x 114 mm (4" x 4.5")
- **Winch weight** : 13.8 kg / 30.4 lb
- **Gross weight** : 22 kg / 48.4 lb
- **Box dimension** : 440 x 287 x 193 mm (17.3" x 11.3" x 7.6")

PERFORMANCE DATA**Line Pull and Rope Capacity**

Layer of Wire Rope	Pull by Layer, kg / lb	Total Rope on the Drum, m / ft
1 st	544 / 1,200	4.2 / 13.8
2 nd	494 / 1,089	8.8 / 28.9
3 rd	452 / 996	6.6 / 21.7
4 th	416 / 917	18.3 / 60

Line Speed and Amp. Draw (1st layer of wire rope on the drum)

Line Pull kg / lb	Line Speed mpm / fpm	Amp. Draw 12V	Amp. Draw 24V	Percentage Duty Cycle ED%
No Load	12.5 / 41	60	35	25
113 / 250	9.5 / 31.2	80	50	23
227 / 500	8 / 26.2	100	60	20
340 / 750	7 / 23	120	68	18
454 / 1,000	6.2 / 20.3	135	75	15
544 / 1,200	5.5 / 18	150	80	13

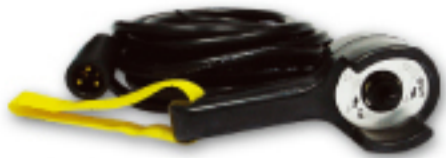
DIMENSION mm/in

Accessories

Remote Control

PN 880025
Switch W/5 m (17') cord for DHC-1200/1600/2000/3000, Wolf 8.5/12.0

PN 880126
Switch W/5 m (17') cord for Rhino 8/12
(coming with protective thermal sensor LED)



DC Solenoid

PN 881743 (12V) / **PN 881744** (24V)
for DHC-1200/1600/2000/3000



Sealed Contactor

PN 881355 (12V) / **PN 881356** (24V)
400A, for Wolf 8.5/12.0, Rhino 8/12

PN 881357 (12V) / **PN 881358** (24V)
250A, for DHC-1200/1600/2000/3000



• PN 881355
• PN 881356



• PN 881357
• PN 881358

Snatch Block

PN 881079
Max load 10,000 kg/22,000 lb
for DHC-1200/1600/2000/3000, Yak 5/7

PN 881082
Max load 13,610 kg/30,000 lb
for HV-8/10/12, Wolf 8.5/12.0, Rhino 8/12



• PN 881079



• PN 881082

Battery Isolation Switch

PN 881097
2 Position Off-On 12V 500 Amp for Wolf 8.5/12.0,
DHC-1200/1600/2000/3000, Rhino 8/12



Roller Fairlead

PN 880160
179 mm throat for HV-8 Std. drum, Bison 30

PN 880180
245 mm throat for HV-8 Long drum, HV-10/12/15

PN 880023
210 mm throat for Wolf 8.5 / 12.0

PN 880198
362 mm throat for HV-20000

PN 881587
210 mm throat for Rhino 8/12

PN 881479
149 mm throat for Yak 5/7 Std. drum

PN 881480
229 mm throat for Yak 5/7 Long drum



Detachable Control Box

PN 881153 (12V) / **PN 881154** (24V) for DHC-1200/1600/2000/3000

PN 880340 (12V) / **PN 880341** (24V) for Wolf 8.5/12.0

PN 881581 (12V) / **PN 881582** (24V)
for Rhino 8 (comes with built-in over-load protector)

PN 881645 (12V) / **PN 881646** (24V)
for Rhino 12 (comes with built-in over-load protector)



• PN 881153 (12V) • PN 880340 (12V) • PN 881581 (12V) / PN 881582 (24V)
• PN 881154 (24V) • PN 880341 (24V) • PN 881645 (12V) / PN 881646 (24V)

Cable Tensioner

PN 881238
for HV-8 Std. drum

PN 880179
for HV-8 Long drum, HV-10/12/15

PN 880197
for HV-20000

PN 881983
for Bison 30

PN 880358
for Wolf 8.5/12.0

PN 881236
for Yak 5/7 Std. drum

PN 881237
for Yak 5/7 Long drum

PN 881667
for Rhino 8/12



Air Clutch

PN 880181
for HV-8/10/12/15/20000



Extended Clutch Kit

PN 881314
for HV-8/10/12/15



Over Center Valve

PN 880145
70-210 bar setting for HV-8/10/12/15

PN 880184
70-210 bar setting for HV-20000



Wire Rope with Hook

PN 881245 4.8 mm x 18.3 m for DHC-1200

PN 881147 5.5 mm x 19.8 m for DHC-1600

PN 881149 6.3 mm x 30.5 m for DHC-2000

PN 881150 8.3 mm x 22.9 m for DHC-3000

PN 881239 8.0 mm x 45 m for Wolf 8.5

PN 880106 9.5 mm x 30.5 m for Wolf 12.0



Winch Accessory Kit

Heavy Duty Kit
Part Number: **PN 882068**
for HV-8/10/12, Wolf 8.5/12.0, Rhino 8/12, Yak 5/7

- 13,610 kg / 30,000 lb maximum capacity snatch block, **PN 881082**
- 100mm x 2.4m (4" x 8') tree trunk protector strap, **PN 881091**
- 75mm x 9m (3" x 30') recovery strap rated to 9,800 kg / 21,600 lb, **PN 881090**
- Bow Shackle, 20 mm (3/4") pin diameter, **PN 881092**
- 3 m of 8 mm (10' of 5/16") grade 70 choker chain with hooks, **PN 881096**
- Recovery damper, **PN 881557**
- Leather gloves, **PN 881558**
- Duffel bag, **PN 881661**



Emergency Stop Switch

400A **PN 881668**



Industrial Winch & Accessories

Series		Hydraulic Recovery Winch							
Model Number		HV-8	HV-10	HV-12	HV-15	HV-20000	Bison 30	Yak 5	Yak 7
Gear Train		Planetary gears						Worm gears	
Rated Line Pull	SAE J706 rating	3,630 kg / 8,000 lb	4,535 kg / 10,000 lb	5,440 kg / 12,000 lb	6,800 kg / 15,000 lb	9,070 kg / 20,000 lb	13,610 kg / 30,000 lb	2,268 kg / 5,000 lb	3,175 kg / 7,000 lb
	EN 14492-1 rating	3,560 kg	4,300 kg	5,100 kg	6,800 kg	-	-	2,200 kg	3,200 kg
Over-Center Valve		●	●	●	●	●	●	●	●
Roller Fairlead	For std. drum	●	●	●	●	●	●	●	●
	For long drum	●	-	-	-	-	-	●	●
Cable Tensioner	For std. drum	○	○	○	○	●	●	○	○
	For long drum	○	-	-	-	-	-	○	○
Air Clutch		○	○	○	○	●	●	-	-
Snatch Block		○	○	○	-	-	-	○	○
Base Plate		-	-	-	-	●	-	-	-

Series		Electric Recovery Winch				Heavy Duty Hoist			
Model Number		Rhino 8	Rhino 12	Wolf 8.5	Wolf 12.0	DHC-1200	DHC-1600	DHC-2000	DHC-3000
Gear Train		Planetary gears		Worm gears		Planetary gears			
Rated Line Pull or Lifting Load	SAE J706 rating	3,630 kg / 8,000 lb	5,440 kg / 12,000 lb	3,856 kg / 8,500 lb	5,443 kg / 12,000 lb	544 kg / 1,200 lb	726 kg / 1,600 lb	907 kg / 2,000 lb	1,361 kg / 3,000 lb
	EN 14492-1 rating	3,560 kg	5,100 kg	-	-	-	-	-	-
Remote Control		●	●	●	●	●	●	●	●
Control Box	12V	●	●	●	●	●	●	●	●
	24V	●	●	●	●	●	●	●	●
Wire Rope w/Hook		○	○	●	●	●	●	●	●
Roller Fairlead		●	●	●	●	-	-	-	-
Battery Lead		●	●	●	●	●	●	●	●
Cable Tensioner		○	○	●	●	-	-	-	-
Snatch Block		○	○	○	○	○	○	○	○

● Means as a standard accessory / ○ Means as an option accessory

