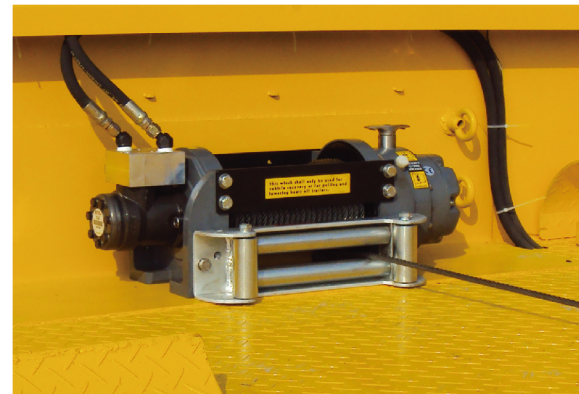


## INDUSTRIAL WINCH

As a professional winch manufacturer, COMEUP provides different models of hydraulic or electric recovery winches and heavy duty hoists for industrial applications. COMEUP Industrial Winches comes with the supreme power and reliability to handle the most demanding situations, including both military and commercial purposes. A greater D/d ratio (wire rope/drum diameter) allows for heavy duty applications on car transporters, wreckers, tractors, trucks and fire / rescue vehicles. COMEUP industrial winches meet international standards such as SAE J706, CE Machinery Directive 2006/42/EC, and EN 14492-1:2006 Power Driven Winches. It wins the clients' trust and appreciation through reliable quality, state-of-the-art process and innovation.

▲ Limited One (1) year Warranty





# HYDRAULIC RECOVERY WINCH

▲ Limited One (1) year Warranty.

Powered by a PTO (power take off) unit driven pump, COMEUP Hydraulic Recovery Winches feature a professional hydraulic system for "Working" applications at cost effective, extremely powerful, reliable, light weight and variable line speed for high work rate. They come with a drag brake and over-center valve providing complete braking without slip. The efficient and constant operating high torque motor supports professional applications in tough situations. All COMEUP hydraulic recovery winches are for particular applications such as rescuing and recovering vehicles, cargo trucks, vehicle recovery and many other commercial vehicles.

- ▲ Bison Series 30,000 ~ 20,000 lb
- ▲ HV Series 15,000 ~ 8,000 lb

## Features:

- Powered by an onboard hydraulic pump or PTO
- Fast and variable recovery speeds for high speed working
- Efficient and constant operating high torque motor
- 2-stage planetary gear train for greater pulling force
- Turn clutch by ergonomic T-handle for rapid wire rope payout
- Drag brake and over-center valve providing complete braking
- EN 14492-1 supported: 10:1 D/d ratio and 2:1 wire rope strength allow severe duty vehicles and commercial recovery
- Meet SAE J706, CE Machinery Directive 2006/42/EC, and EN 14492-1:2006 Power Driven Winches.

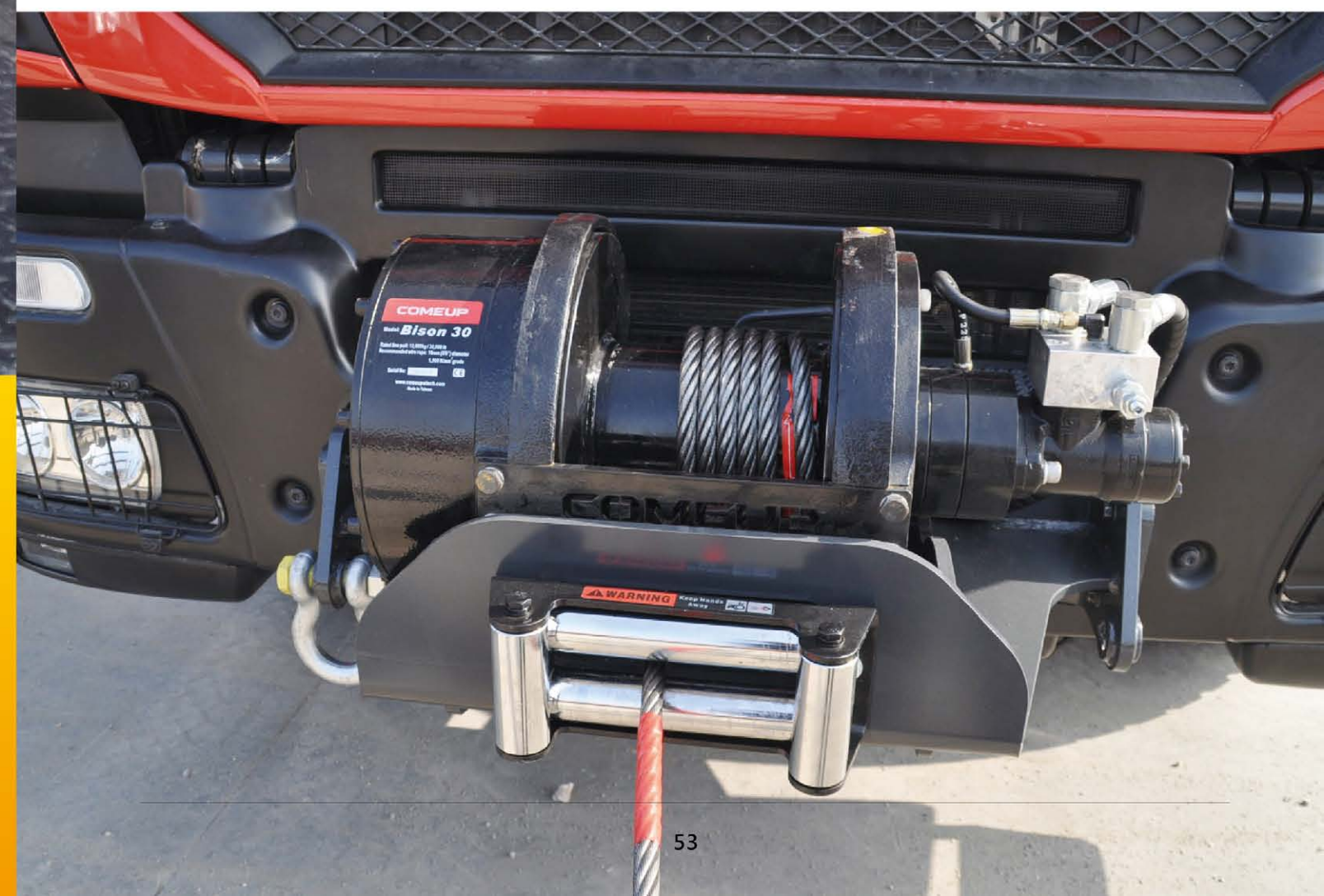
# BISON SERIES

20,000 - 30,000 lb pulling capacities



Remark: Low pressure motor also available upon request

- 1 Powered by a PTO (power take off unit) driven pump with variable recovery speeds for high working.
- 2 Highly efficient and constant operating torque motor.
- 3 The Multi-Disc Brake (MDB) patented for holding full load
- 4 Hardened 2-stage planetary gear train provides faster line.
- 5 Built-in air clutch for rapid wire rope payout





## Bison 30 Hydraulic Recovery Winch



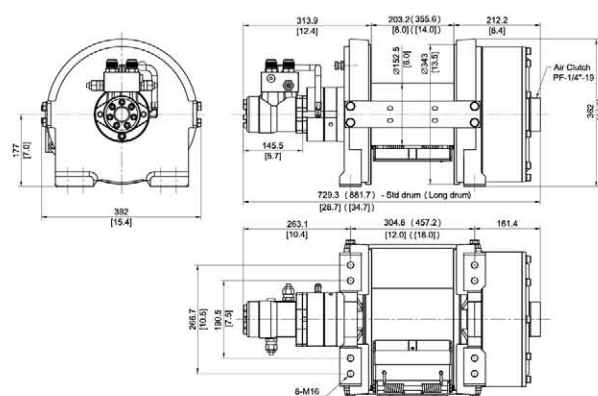
PN 683030 Std. drum | PN 683352 Long. drum

### SPECIFICATIONS :

- **Rated line pull** : 13,600 kg (30,000 lb) SAE J706 rating
- **Line speed (at 1<sup>st</sup> layer of rope)** : 5.0 mpm at 60 l/min (16 fpm at 15.9 g/min)
- **Operation pressure** : 175 bar / 2,540 psi
- **Max oil flow** : 60 l/min (15.9 g/min)
- **Hydraulic motor** : 155.7 cm<sup>3</sup> / rev (9.5 in<sup>3</sup> / rev)
- **Gear ratio** : 2-stage planetary gear 41:1
- **Winch construction** : Steel cast housing with steel drum
- **Clutch (Freespooling)** : Output shaft disengaged
- **Brake** : Multi-Disc Brake (MDB) patented
- **Rotation of winch** : Wire rope shall be under-wound orientation only
- **Drum barrel diameter** : 152.5 mm (6")
- **Drum flange diameter** : 343 mm (13.5")
- **Distance between flanges** : 203.2 mm (8") - Std. drum  
355.6 mm (14") - Long drum
- **Mounting bolts pattern** :  
Std. drum - 190.5 x 304.8 mm (7.5" x 12"); 266.7 x 304.8 mm (10.5" x 12")  
Long drum - 190.5 x 457.2 mm (7.5" x 18"); 266.7 x 457.2 mm (10.5" x 18")
- **Wire rope recommended** : 16 mm x 43 m (5/8" x 141') for Std. drum and 75 m (246') for Long drum, 1,960 N/mm<sup>2</sup> (EIPS) grade with a minimum breaking strength of 179 kN (40,167 lbf) is required for SAE J706 rating.
- **Winch weight** : 175 kg / 386 lb (Std. drum)  
197 kg / 434 lb (Long drum)
- **Gross weight** : 198 kg / 437 lb (Std. drum)  
235 kg / 518 lb (Long drum)
- **Box dimension** : 900 x 510 x 530 mm (35.4" x 20.1" x 20.9") - Std. drum  
1,040 x 620 x 510 mm (40.9" x 24.4" x 20.1") - Long drum

- Powered by a PTO (power take off unit) driven pump with variable recovery speeds for high working rate
- 155.7 cm<sup>3</sup>/rev highly efficient and constant operating torque motor with 13,600 kg / 30,000 lb capacity
- Hardened 2 stage planetary gear train with 41:1 gear ratio provides faster line speed
- Built-in air clutch for rapid wire rope payout
- The Multi-Disc Brake ( MDB ) patented for holding full load
- Great for severe duty trailers, roll-back carriers, and commercial recovery application
- Roller fairlead, cable tensioner and two ways counterbalance valve supplied
- Meet SAE J706 and CE machinery directive 2006/42/EC

### DIMENSION mm/in :



Long drum



Std. drum

### PERFORMANCE DATA :

Layer of Wire Rope	Line Pull and Rope Capacity		Line Speed	
	Pull by Layer, kg / lb	Total Rope on the Drum, m / ft	at 60 l/min (15.9 g/min ), mpm / fpm	
		Std. drum	Long drum	
1 <sup>st</sup>	13,600 / 30,000	6 / 20	11 / 36	5.0 / 16
2 <sup>nd</sup>	11,438 / 25,216	14 / 44	25 / 82	5.9 / 19
3 <sup>rd</sup>	9,864 / 21,745	22 / 73	40 / 131	6.9 / 23
4 <sup>th</sup>	8,670 / 19,115	32 / 104	58 / 190	7.8 / 26
5 <sup>th</sup>	7,735 / 17,052	43 / 141	75 / 246	8.8 / 29

## Bison 20 Hydraulic Recovery Winch



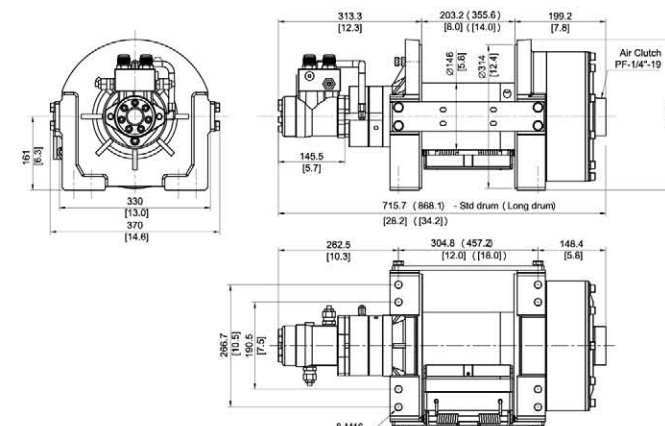
PN 682030 Std. drum | PN 682169 Long. drum

### SPECIFICATIONS :

- **Rated line pull** : 9,070 kg (20,000 lb) EN 14492-1 rating & SAE J706 rating
- **Line speed (at 1<sup>st</sup> layer of rope)** : 7.1 mpm at 60 l/min (23 fpm at 15.9 g/min)
- **Operation pressure** : 175 bar / 2,540 psi
- **Max oil flow** : 60 l/min (15.9 g/min)
- **Hydraulic motor** : 155.7 cm<sup>3</sup> / rev (9.5 in<sup>3</sup> / rev)
- **Gear ratio** : 2-stage planetary gear 30:1
- **Winch construction** : Steel cast housing with steel drum
- **Clutch (Freespooling)** : Output shaft disengaged
- **Brake** : Multi-Disc Brake (MDB) patented
- **Rotation of winch** : Wire rope shall be under-wound orientation only
- **Drum barrel diameter** : 146 mm (5.8")
- **Drum flange diameter** : 314 mm (12.4")
- **Distance between flanges** : 203.2 mm (8") - Std. drum  
355.6 mm (14") - Long drum
- **Mounting bolts pattern** :  
Std. drum - 190.5 x 304.8 mm (7.5" x 12"); 266.7 x 304.8 mm (10.5" x 12")  
Long drum - 190.5 x 457.2 mm (7.5" x 18"); 266.7 x 457.2 mm (10.5" x 18")
- **Wire rope recommended** :  
\*14 mm x 43 m (9/16" x 141') for Std. drum and 80 m (262') for Long drum, 1,960 N/mm<sup>2</sup> (EIPS) grade with a minimum breaking strength of 137 kN (30,742) is required for SAE J706 rating.  
\*16 mm x 30 m (5/8" x 98') for Std. drum and 55 m (180') for Long drum, 1,960 N/mm<sup>2</sup> breaking strength of 179 kN (40,167 lbf) is required for EN 14492-1 rating.
- **Winch weight** : 135 kg / 298 lb (Std. drum)  
150 kg / 331 lb (Long drum)
- **Gross weight** : 165 kg / 364 lb (Std. drum)  
195 kg / 430 lb (Long drum)
- **Box dimension** : 870 x 500 x 510 mm (34.3" x 19.7" x 20.1") - Std. drum  
1,025 x 500 x 510 mm (40.4" x 19.7" x 20.1") - Long drum

- Powered by a PTO (power take off unit) driven pump with variable recovery speeds for high working rate
- 155.7 cm<sup>3</sup>/rev highly efficient and constant operating torque motor with 9,070 kg / 20,000 lb capacity
- Hardened 2 stage planetary gear train with 30:1 gear ratio provides faster line speed
- Built-in air clutch for rapid wire rope payout
- The Multi-Disc Brake ( MDB ) patented for holding full load
- Great for severe duty trailers, roll-back carriers, and commercial recovery application
- Roller fairlead, cable tensioner and two ways counterbalance valve supplied
- Meet SAE J706, CE machinery directive 2006/42/EC or EN 14492-1:2006 Power Driven Winches

### DIMENSION mm/in :



Long drum



Std. drum

### PERFORMANCE DATA :

Line Pull and Rope Capacity					Line Speed	
Layer of Wire Rope	Pull by Layer, kg / lb	Total Rope on the Drum, m / ft				at 60 l/min (15.9 g/min ), mpm / fpm
		Std. drum	Long drum			
		14 mm rope	16 mm rope	14 mm rope	16 mm rope	
1 <sup>st</sup>	9,070 / 20,000	7 / 23	6 / 20	12 / 39	11 / 36	7.1 / 23
2 <sup>nd</sup>	7,719 / 17,017	15 / 49	13 / 43	27 / 89	24 / 79	8.3 / 27
3 <sup>rd</sup>	6,719 / 14,813	24 / 79	21 / 69	43 / 141	39 / 128	9.5 / 31
4 <sup>th</sup>	5,948 / 13,113	34 / 112	30 / 98	62 / 203	55 / 180	10.8 / 35
5 <sup>th</sup>	5,335 / 11,762	43 / 141	-	80 / 262	-	12 / 39



# HV SERIES

8,000 - 15,000 lb pulling capacities



EN 14492-1  
COMPLIANT

- Meet SAE J706, CE Machinery Directive 2006/42/EC, and EN 14492-1:2006 Power Driven Winches.

## 1 Powered by a PTO Device

Adjustable oil flow and pressure allow variable line pull and speed.

## 2 Extreme Motor

Highly efficient and constant operating torque output.

## 3 Doubled Failsafe Brakes

Mechanical drag brake and over-center valve providing full 100% braking.

## 4 Outstanding and Elegant Design

Aluminum die cast housings with steel drum.

## 5 2-stage Planetary Gear Train

Less gear reduction ratio for maximum rated line speed.

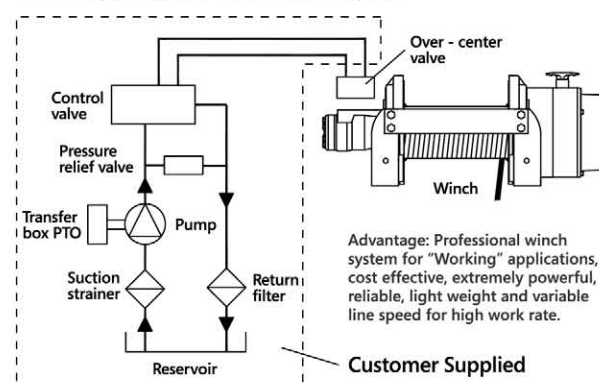
## 6 Turn Clutch by Ergonomic T-handle for Rapid Wire Rope Payout

Easy to turn the T-handle for rapid wire rope payout and workable for left or right side location.

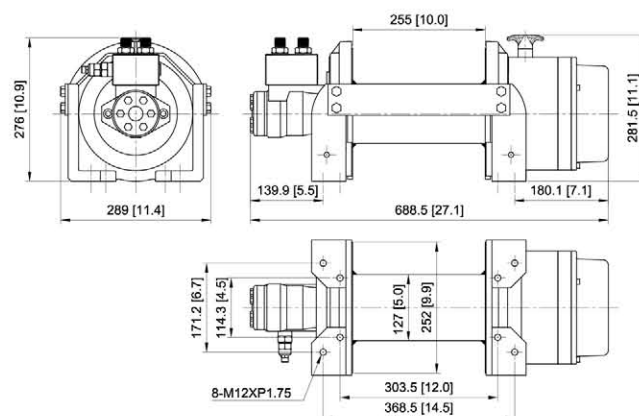
Compliant with EN 14492-1 requirements for recovery winch:  
\* The working coefficient for the first rope layer on the drum shall be at least 2.  
\* The D/d ratio to the center of the rope shall be at least 10 for the drum.  
\* Drum freeboard shall be at least 1.5 x rope diameter.

### Hydraulic System Installation

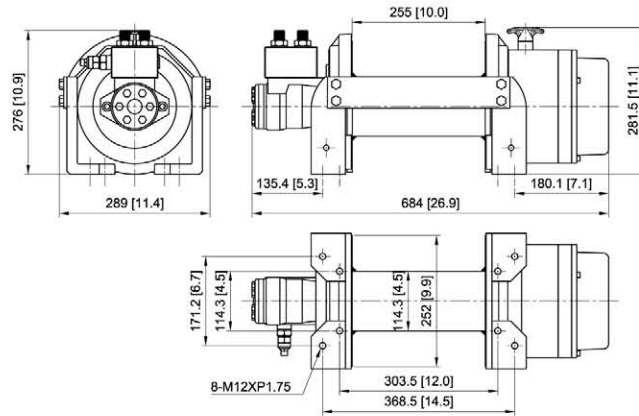
(Powered by a PTO/power take off unit driven pump)



## DIMENSION mm/in : (HV-15)



## DIMENSION mm/in : (HV-12)



## HV-15 Hydraulic Recovery Winch



PN 686732 Std. drum  
PN 687548 Std. drum (Clutch in left side)

## SPECIFICATIONS :

- **Rated line pull** : 6,800 kg (15,000 lb) EN 14492-1 rating & SAE J706 rating
- **Line speed (at 1<sup>st</sup> layer of rope)** : 9 mpm at 60 l/min (30 fpm at 15.9 g/min)
- **Operation pressure** : 150 bar / 2,175 psi
- **Max oil flow** : 60 l/min (15.9 g/min)
- **Hydraulic motor** : 156 cm<sup>3</sup> / rev (9.5 in<sup>3</sup> / rev)
- **Gear ratio** : 2-stage planetary gear 19.4:1
- **Winch construction** : Aluminum die cast housings with steel drum
- **Clutch (Freespooling)** : Rotating ring gear
- **Brake** : Spring applied drag brake together with over-center valve supplied
- **Rotation of winch** : Wire rope shall be under-wound orientation only
- **Drum barrel diameter** : 127 mm (5.0")
- **Drum flange diameter** : 252 mm (9.9")
- **Distance between flanges** : 255 mm (10.0")
- **Mounting bolts pattern** : 303.5 x 114.3 mm (12.0" x 4.5")  
368.5 x 171.2 mm (14.5" x 6.7")
- **Wire rope recommended** : 14 mm x 27 m (9/16" x 89'), 1,960 N/mm<sup>2</sup> grade with a minimum breaking strength of 137 kN (30,742 lbf) is required for SAE J706 and EN 14492-1 ratings.
- **Winch weight** : 72 kg / 158.7 lb
- **Gross weight** : 88 kg / 194 lb
- **Box dimension** : 715 x 415 x 311 mm (28.1" x 16.3" x 12.2")

## PERFORMANCE DATA :

Line Pull and Rope Capacity		Line Speed	
Layer of Wire Rope	Pull by Layer, Total Rope on the at 60 l/min (15.9 g/min), kg / lb Drum, m / ft	mpm / fpm	
1 <sup>st</sup>	6,800 / 15,000 7.8 / 25.6	9.0 / 30.0	
2 <sup>nd</sup>	5,673 / 12,507 17.3 / 56.8	10.5 / 34.4	
3 <sup>rd</sup>	4,867 / 10,730 27.0 / 89.0	12.3 / 40.4	

## HV-12 Hydraulic Recovery Winch



PN 684311 Std. drum  
PN 685433 Std. drum (Clutch in left side)

## SPECIFICATIONS :

- **Rated line pull** : 5,440 kg (12,000 lb) SAE J706 rating  
5,100 kg EN 14492-1 rating
- **Line speed (at 1<sup>st</sup> layer of rope)** : 10 mpm at 60 l/min (33 fpm at 15.9 g/min)
- **Operation pressure** : 150 bar / 2,175 psi
- **Max oil flow** : 60 l/min (15.9 g/min)
- **Hydraulic motor** : 125 cm<sup>3</sup> / rev (7.6 in<sup>3</sup> / rev)
- **Gear ratio** : 2-stage planetary gear 19.4:1
- **Winch construction** : Aluminum die cast housings with steel drum
- **Clutch (Freespooling)** : Rotating ring gear
- **Brake** : Spring applied drag brake together with over-center valve supplied
- **Rotation of winch** : Wire rope shall be under-wound orientation only
- **Drum barrel diameter** : 114 mm (4.5")
- **Drum flange diameter** : 252 mm (9.9")
- **Distance between flanges** : 255 mm (10.0")
- **Mounting bolts pattern** : 303.5 x 114.3 mm (12.0" x 4.5")  
368.5 x 171.2 mm (14.5" x 6.7")
- **Wire rope recommended** : 12 mm x 39 m (1/2" x 128'), 1,960 N/mm<sup>2</sup> grade with a minimum breaking strength of 100.5 kN (22,552 lbf) is required for SAE J706 and EN 14492-1 ratings.
- **Winch weight** : 71 kg / 156.5 lb
- **Gross weight** : 87 kg / 191.8 lb
- **Box dimension** : 715 x 415 x 311 mm (28.1" x 16.3" x 12.2")

## PERFORMANCE DATA :

Line Pull and Rope Capacity		Line Speed	
Layer of Wire Rope	Pull by Layer, Total Rope on the at 60 l/min (15.9 g/min), kg / lb Drum, m / ft	mpm / fpm	
1 <sup>st</sup>	5,440 / 12,000 8.2 / 26.9	10.0 / 33.0	
2 <sup>nd</sup>	4,570 / 10,075 18.0 / 59.1	11.6 / 38.1	
3 <sup>rd</sup>	3,939 / 8,684 29.3 / 96.1	13.5 / 44.3	
4 <sup>th</sup>	3,462 / 7,632 39.0 / 128.0	15.4 / 50.5	



## HV-10 Hydraulic Recovery Winch



PN 682546 Std. drum  
PN 683129 Std. drum (Clutch in left side)

### SPECIFICATIONS :

- **Rated line pull** : 4,535 kg (10,000 lb) SAE J706 rating  
4,300 kg EN 14492-1 rating
- **Line speed (at 1<sup>st</sup> layer of rope)** : 14 mpm at 60 l/min (46 fpm at 15.9 g/min)
- **Operation pressure** : 150 bar / 2,175 psi
- **Max oil flow** : 60 l/min (15.9 g/min)
- **Hydraulic motor** : 97.3 cm<sup>3</sup> / rev (5.9 in<sup>3</sup> / rev)
- **Gear ratio** : 2-stage planetary gear 16:1
- **Winch construction** : Aluminum die cast housings with steel drum
- **Clutch (Freespooling)** : Rotating ring gear
- **Brake** : Spring applied drag brake together with over-center valve supplied
- **Rotation of winch** : Wire rope shall be under-wound orientation only
- **Drum barrel diameter** : 102 mm (4.0")
- **Drum flange diameter** : 201.5 mm (7.9")
- **Distance between flanges** : 253 mm (10")
- **Mounting bolts pattern** : 291.6 x 171.2 mm (11.5" x 6.7")  
374.2 x 114.3 mm (14.7" x 4.5")
- **Wire rope recommended** : 11 mm x 27 m (7/16" x 89'), 1,960 N/mm<sup>2</sup> grade with a minimum breaking strength of 84.4 kN (18,939 lbf) is required for SAE J706 and EN 14492-1 ratings.
- **Winch weight** : 37 kg / 81.4 lb
- **Gross weight** : 46.6 kg / 102.5 lb
- **Box dimension** : 665 x 370 x 285 mm (26.2" x 14.6" x 11.2")

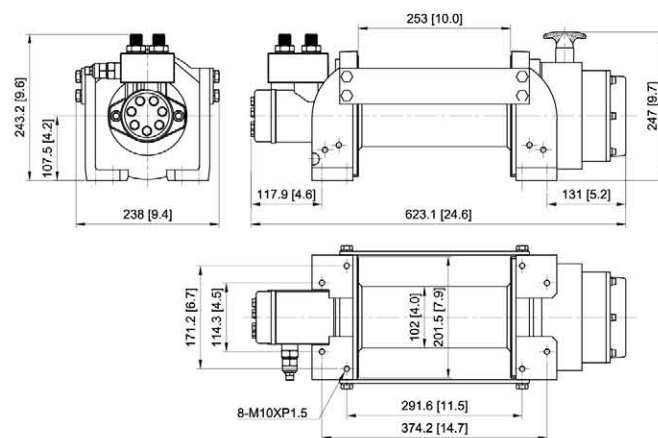
### PERFORMANCE DATA :

Line Pull and Rope Capacity			Line Speed
Layer of Wire Rope	Pull by Layer, kg / lb	Total Rope on the Drum, m / ft	at 60 l/min (15.9 g/min), mpm / fpm
1 <sup>st</sup>	4,535 / 10,000	8.0 / 26.2	14.0 / 46.0
2 <sup>nd</sup>	3,796 / 8,369	17.5 / 57.4	16.3 / 53.5
3 <sup>rd</sup>	3,264 / 7,196	27.0 / 89.0	19.0 / 62.3

## Hydraulic Recovery Winch Applications



### DIMENSION mm/in :



## HV-8 Hydraulic Recovery Winch



PN 680816 Std. drum | PN 681091 Long drum  
PN 681123 Std. drum (Clutch in left side)  
PN 681347 Long drum (Clutch in left side)

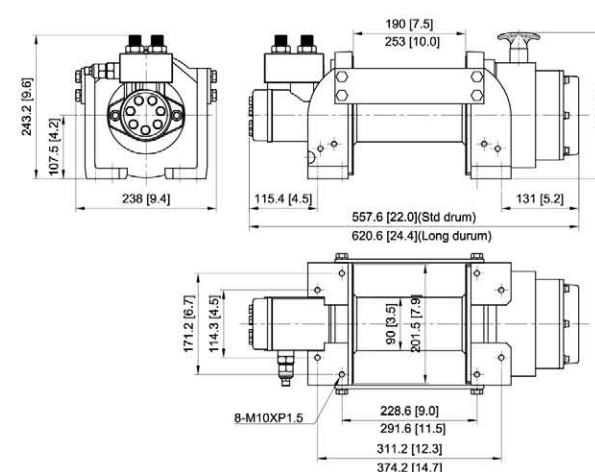
### SPECIFICATIONS :

- **Rated line pull** : 3,630 kg (8,000 lb) SAE J706 rating  
3,560 kg EN 14492-1 rating
- **Line speed (at 1<sup>st</sup> layer of rope)** : 15 mpm at 60 l/min (49 fpm at 15.9 g/min)
- **Operation pressure** : 150 bar / 2,175 psi
- **Max oil flow** : 60 l/min (15.9 g/min)
- **Hydraulic motor** : 77.8 cm<sup>3</sup> / rev (4.7 in<sup>3</sup> / rev)
- **Gear ratio** : 2-stage planetary gear 16:1
- **Winch construction** : Aluminum die cast housings with steel drum
- **Clutch (Freespooling)** : Rotating ring gear
- **Brake** : Spring applied drag brake together with over-center valve supplied
- **Rotation of winch** : Wire rope shall be under-wound orientation only
- **Drum barrel diameter** : 90 mm (3.5")
- **Drum flange diameter** : 201.5 mm (7.9")
- **Distance between flanges** : 190 mm (7.5") - Std. drum / 253 mm (10") - Long drum
- **Mounting bolts pattern** :  
Std. drum - 228.6 x 171.2 mm (9.0" x 6.7") ; 311.2 x 114.3 mm (12.3" x 4.5")  
Long drum - 291.6 x 171.2 mm (11.5" x 6.7") ; 374.2 x 114.3 mm (14.7" x 4.5")
- **Wire rope recommended** : 10 mm x 30 m (3/8" x 98') for Std. drum and 40 m (131') for long drum, 1,960 N/mm<sup>2</sup> grade with a minimum breaking strength of 69.8 kN (15,663 lbf) is required for SAE J706 and EN 14492-1 ratings.
- **Winch weight** : 35.5 kg / 78.1 lb (Std. drum) ; 37.5 kg / 82.7 lb (Long drum)
- **Gross weight** : 43.3 kg / 95.3 lb (Std. drum) ; 45.3 kg / 99.9 lb (Long drum)
- **Box dimension** : 600 x 370 x 285 mm (23.6" x 14.6" x 11.2") - Std. drum; 665 x 370 x 285 mm (26.2" x 14.6" x 11.2") - Long drum

### PERFORMANCE DATA :

Line Pull and Rope Capacity			Line Speed
Layer of Wire Rope	Pull by Layer, kg / lb	Total Rope on the Drum, m / ft	at 60 l/min (15.9 g/min), mpm / fpm
1 <sup>st</sup>	3,630 / 8,000	5.8 / 19.0	15.0 / 49.0
2 <sup>nd</sup>	3,025 / 6,669	12.8 / 42.0	18.2 / 59.7
3 <sup>rd</sup>	2,593 / 5,717	20.9 / 68.6	21.2 / 69.6
4 <sup>th</sup>	2,269 / 5,002	30 / 98	24.2 / 79.4

### DIMENSION mm/in :





# HYDRAULIC WORM GEAR WINCH



## Yak Series

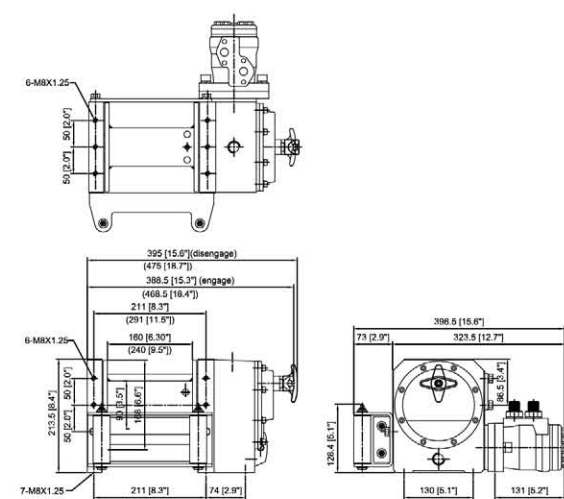
- Powered by an onboard hydraulic pump or PTO
- Fast and variable recovery speeds for high working rate
- High efficient and constant-operating torque motor
- Irreversible single stage worm gear provides instant braking and slip free operation
- An ergonomic T-handle for rapid wire rope payout
- Heavy duty roller fairlead with grease zerk fittings
- EN 14492-1 supported: 10:1 D/d ratio, 2:1 wire rope strength and 1.5d freeboard for severe duty car and commercial recovery
- Standard Compliance : SAE J706, CE Machinery Directive 2006/42/EC, and EN 14492-1:2006 Power Driven Winches.



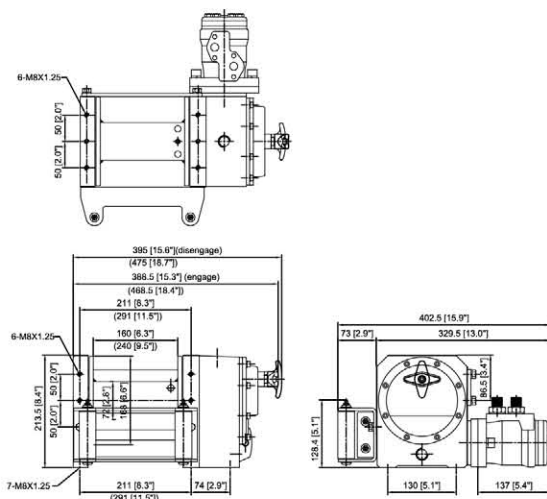
## Compliant with EN 14492-1 requirements for recovery winch:

- \* The working coefficient for the first rope layer on the drum shall be at least 2.
- \* The D/d ratio to the center of the rope shall be at least 10 for the drum.
- \* Drum freeboard shall be at least 1.5 x rope diameter.

## DIMENSION mm/in : (Yak 7)



## DIMENSION mm/in : (Yak 5)



## Yak 7 Hydraulic Worm Gear Winch



PN 681260 Std. drum | PN 681266 Long drum

## SPECIFICATIONS :

- **Rated line pull** : 3,175 kg (7,000 lb) SAE J706 rating  
3,200 kg EN 14492-rating
- **Line speed (at 1<sup>st</sup> layer of rope)** : 5.2 mpm at 40 l/min (17.1 fpm at 10.6 g/min)
- **Operation pressure** : 110 bar / 1,595 psi
- **Max oil flow** : 40 l/min (10.6 g/min)
- **Hydraulic motor** : 48.6 cm<sup>3</sup> / rev (3.0 in<sup>3</sup> / rev)
- **Gear ratio** : 1-stage worm gear 50:1
- **Winch construction** : Aluminum die cast housings with steel drum
- **Clutch (Freespooling)** : Worm gear disengaged
- **Brake** : Irreversible worm gear
- **Rotation of winch** : Wire rope shall be under-wound orientation only
- **Drum barrel diameter** : 90 mm (3.5")
- **Drum flange diameter** : 168 mm (6.6")
- **Distance between flanges** : 160 mm (6.3") - Std. drum / 240 mm (9.5") - Long drum
- **Mounting bolts pattern** : 130 x 211 mm (5.1" x 8.3") - Std. drum  
130 x 291 mm (5.1" x 11.5") - Long drum
- **Wire rope recommended** :  
\* 10 mm x 10.7m for Std. drum and 16.2 m for Long drum, 1,960N/mm<sup>2</sup> grade with a minimum breaking strength of 69.8 kN required for EN 14492-1 rating  
\* 3/8" x 57.4' for Std. drum and 87.3' for Long drum, EIPS grade with a minimum breaking strength of 15,663 lbf required for SAE J706 rating
- **Winch weight** : 29 kg / 63.9 lb (Std. drum) ; 33 kg / 72.8 lb (Long drum)
- **Gross weight** : 33 kg / 72.8 lb (Std. drum) ; 37 kg / 81.6 lb (Long drum)
- **Box dimension** : 431 x 386 x 256 mm (17" x 15.2" x 10.1") - Std. drum  
511 x 386 x 256 mm (20.1" x 15.2" x 10.1") - Long drum

## PERFORMANCE DATA :

Layer of Wire Rope	Line Pull and Rope Capacity		Line Speed	
	Pull by Layer, kg / lb	Total Rope on the Drum, m / ft Std. drum Long drum	at 40 l/min (10.6 g/min), mpm / fpm	
1 <sup>st</sup>	3,175 / 7,000	4.9 / 16.1 7.4 / 24.3	5.2 / 17.1	
2 <sup>nd</sup>	2,646 / 5,833	10.7 / 35.1 16.2 / 53.1	6.2 / 20.3	
3 <sup>rd</sup>	2,268 / 5,000	17.5 / 57.4 26.6 / 87.3	7.2 / 23.6	

## Yak 5 Hydraulic Worm Gear Winch



PN 681330 Std. drum | PN 681350 Long drum

## SPECIFICATIONS :

- **Rated line pull** : 2,268 kg (5,000 lb) SAE J706 rating  
2,200 kg EN 14492-1 rating
- **Line speed (at 1<sup>st</sup> layer of rope)** : 4.4 mpm at 45 l/min (14.4 fpm at 11.9 g/min)
- **Operation pressure** : 60 bar / 870 psi
- **Max oil flow** : 45 l/min (11.9 g/min)
- **Hydraulic motor** : 51.7 cm<sup>3</sup> / rev (3.2 in<sup>3</sup> / rev)
- **Gear ratio** : 1-stage worm gear 50:1
- **Winch construction** : Aluminum die cast housings with steel drum
- **Clutch (Freespooling)** : Worm gear disengaged
- **Brake** : Irreversible worm gear
- **Rotation of winch** : Wire rope shall be under-wound orientation only
- **Drum barrel diameter** : 72 mm (2.8")
- **Drum flange diameter** : 168 mm (6.6")
- **Distance between flanges** : 160 mm (6.3") - Std. drum / 240 mm (9.5") - Long drum
- **Mounting bolts pattern** : 130 x 211 mm (5.1" x 8.3") - Std. drum  
130 x 291 mm (5.1" x 11.5") - Long drum
- **Wire rope recommended** :  
\* 8 mm x 25.5m for Std. drum and 38.6 m for Long drum, 1,960N/mm<sup>2</sup> grade with a minimum breaking strength of 44.7 kN required for EN 14492-1 rating  
\* 5/16" x 112.5' for Std. drum and 170.3' for Long drum, EIPS grade with a minimum breaking strength of 10,030 lbf required for SAE J706 rating
- **Winch weight** : 26 kg / 59.3 lb (Std. drum) ; 29 kg / 63.9 lb (Long drum)
- **Gross weight** : 30 kg / 66.1 lb (Std. drum) ; 33 kg / 72.8 lb (Long drum)
- **Box dimension** : 431 x 386 x 256 mm (17" x 15.2" x 10.1") - Std. drum  
511 x 386 x 256 mm (20.1" x 15.2" x 10.1") - Long drum

## PERFORMANCE DATA :

Layer of Wire Rope	Line Pull and Rope Capacity		Line Speed	
	Pull by Layer, kg / lb	Total Rope on the Drum, m / ft Std. drum Long drum	at 45 l/min (11.9 g/min), mpm / fpm	
1 <sup>st</sup>	2,268 / 5,000	4.9 / 16.1 7.4 / 24.3	4.4 / 14.4	
2 <sup>nd</sup>	1,890 / 4,167	10.8 / 35.4 16.2 / 53.5	5.3 / 17.4	
3 <sup>rd</sup>	1,620 / 3,571	17.6 / 57.7 26.7 / 87.6	6.1 / 20.0	
4 <sup>th</sup>	1,418 / 3,126	25.5 / 83.7 38.6 / 126.6	7.0 / 23.0	
5 <sup>th</sup>	1,260 / 2,778	34.3 / 112.5 51.9 / 170.3	7.9 / 25.9	



# ELECTRIC RECOVERY WINCH

COMEUP, as an international brand of winch manufacturer, is aiming to provide a superior product that is inherently safe to operate in all conditions by all users. COMEUP further assures that its industrial winches comply with all European Standards and Directives including but not limited to EN 14492-1, the Machinery Safety regulations and all current Health and Safety regulations. COMEUP Rhino Series winch is designed to comply the above regulation requirements that ensures maximum performance in the toughest environment and is ideal for commercial, industrial and severe duty application.

▶ Rhino Series 12,000 ~ 8,000 lb

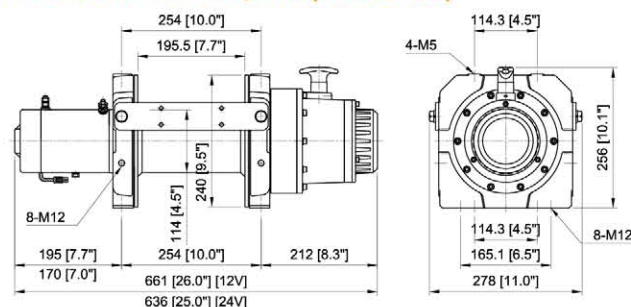
▶ Wolf Series 12,000 ~ 8,500 lb

## Rhino Series

- Reliable electric winch for commercial, industrial and severe duty applications
- 10 equally positioned pin holes with a ergonomic T-handle make end housing may be rotated in 36 degree increments
- Hardened steel, 3-stage planetary gear train for efficient and reliable operation
- Waterproof remote control with thermometric LED indicator alerts when the motor is over-heated
- U.S. Germany, U.K. France, etc patented mechanical cone brake holds full load
- Over-load protector build-in the control box prevents the overloading of the winch
- Submersible sealed contactor handles high amps and allows higher duty cycle
- Standard Compliance: CE Machinery Directive 2006/42/EC, CE Electromagnetic Compatibility Directive 2004/108/EC, EN 14492-1:2006 Power Driven Winches and SAE J706



## DIMENSION mm/in : (Rhino 12)

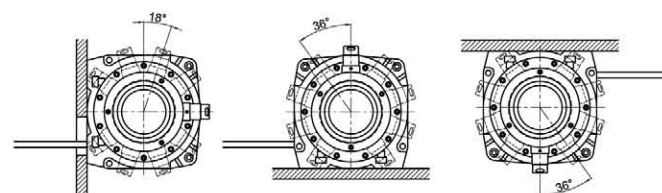


## ▶ OLP (Over-Load Protector) function

The over-load protector built-in the control box designs to prevent overloading of the winch



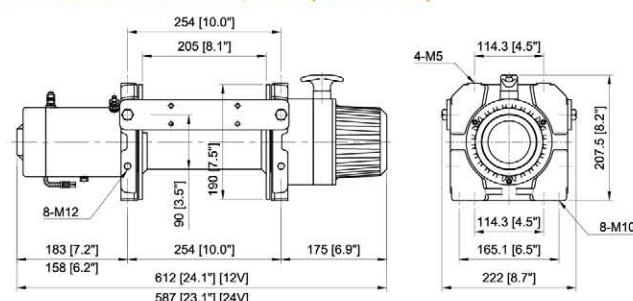
- ▶ 10 equally positioned pin holes ensure seamless clutch transmission and make it easily rotate by 36° Increments.



## ▶ Compliant with EN 14492-1 requirements for recovery winch :

- The working coefficient for the first rope layer on the drum shall be at least 2
- The D/d ratio to the center of the rope shall be at least 10 for the drum.
- Drum freeboard shall be at least 1.5 x rope diameter

## DIMENSION mm/in : (Rhino 8)



## Rhino 12 *Electric Recovery Winch*



PN 851212 (12V) | PN 851224 (24V)

## SPECIFICATIONS :

- **Rated line pull** : 5,440 kg (12,000 lb) SAE J706 rating  
5,100 kg EN 14492-1 rating
- **Motor** : 4,180 w / 5.6 hp 12V series wound  
2,690 w / 3.6 hp 24V series wound
- **Gear ratio** : 3-stage planetary 315:1
- **Clutch (freespooling)** : Rotating ring gear
- **Brake (outside the drum)** : Automatic, full load CBS (Cone Brake Structure)
- **Winch construction** : Aluminum die cast housings with steel drum
- **Drum size** : 114 x 195.5 mm (4.5" x 7.7")
- **Rotation of winch** : Wire rope shall be under-wound orientation only
- **Control** : Waterproof remote with thermometric indicator LED and 5 m (17') cord
- **Mounting bolts pattern** : 254 x 114 mm (10" x 4.5")  
254 x 165 mm (10" x 6.5")
- **Wire rope recommended** :  
\* 12 mm x 21.4m, 1,960N/mm<sup>2</sup> grade with a minimum breaking strength of 100.5 kN required for EN 14492-1 rating  
\* 1/2" x 100', EIPS grade with a minimum breaking strength of 22,552 lbf required for SAE J706 rating
- **Winch weight** : 47 kg / 104 lb
- **Gross weight** : 61 kg / 134 lb
- **Box dimension** : 693 x 313 x 473 mm (27.3" x 12.3" x 18.6")

## PERFORMANCE DATA :

Line Pull and Rope Capacity		
Layer of Wire Rope	Pull by Layer, kg / lb	Total Rope on the Drum, m / ft
1 <sup>st</sup>	5,440 / 12,000	5.9 / 19.4
2 <sup>nd</sup>	4,534 / 9,996	13 / 42.7
3 <sup>rd</sup>	3,885 / 8,565	21.4 / 70
4 <sup>th</sup>	3,399 / 7,494	30.5 / 100

Line Speed and Amp. Draw ( 1 <sup>st</sup> layer of wire rope on the drum )			
Line Pull kg / lb	Line Speed mpm / fpm	Amp. Draw, A	
		12V	24V
No Load	10 / 32.8	40	35
1,814 / 4,000	4.4 / 14.4	140	110
3,630 / 8,000	3.5 / 11.5	280	210
5,535 / 10,000	1.5 / 5.0	350	260
5,440 / 12,000	1.3 / 4.3	420	310

## Rhino 8 *Electric Recovery Winch*



PN 850812 (12V) | PN 850824 (24V)

## SPECIFICATIONS :

- **Rated line pull** : 3,630 kg (8,000 lb) SAE J706 rating  
3,560 kg EN 14492-1 rating
- **Motor** : 3,430 w / 4.6 hp 12V series wound  
1,940 w / 2.6 hp 24V series wound
- **Gear ratio** : 3-stage planetary 211:1
- **Clutch (freespooling)** : Rotating ring gear
- **Brake (outside the drum)** : Automatic, full load CBS (Cone Brake Structure)
- **Winch construction** : Aluminum die cast housings with steel drum
- **Drum size** : 90 x 205 mm (3.5" x 8.1")
- **Rotation of winch** : Wire rope shall be under-wound orientation only
- **Control** : Waterproof remote with thermometric indicator LED and 5 m (17') cord
- **Mounting bolts pattern** : 254 x 114 mm (10" x 4.5")  
254 x 165 mm (10" x 6.5")
- **Wire rope recommended** :  
\* 10 mm x 22.6 m, 1,960N/mm<sup>2</sup> grade with a minimum breaking strength of 69.8 kN required for EN 14492-1 rating  
\* 3/8" x 100', EIPS grade with a minimum breaking strength of 15,663 lbf required for SAE J706 rating
- **Winch weight** : 31 kg / 68.3 lb
- **Gross weight** : 47 kg / 104 lb
- **Box dimension** : 650 x 260 x 440 mm (25.6" x 10.2" x 17.3")

## PERFORMANCE DATA :

Line Pull and Rope Capacity		
Layer of Wire Rope	Pull by Layer, kg / lb	Total Rope on the Drum, m / ft
1 <sup>st</sup>	3,630 / 8,000	6.3 / 20.7
2 <sup>nd</sup>	3,025 / 6,669	13.8 / 45.3
3 <sup>rd</sup>	2,593 / 5,717	22.6 / 74
4 <sup>th</sup>	2,269 / 5,002	30.5 / 100

Line Speed and Amp. Draw ( 1 <sup>st</sup> layer of wire rope on the drum )			
Line Pull kg / lb	Line Speed mpm / fpm	Amp. Draw, A	
		12V	24V
No Load	9.0 / 29.5	45	30
907 / 2,000	3.0 / 10	90	30
1,814 / 4,000	1.5 / 5.0	180	120
2,722 / 6,000	1.0 / 3.3	260	180
3,630 / 8,000	0.7 / 2.3	340	230



## Wolf 12.0 Electric Worm Gear Winch



PN 782478 (12V) | PN 783415 (24V)

### SPECIFICATIONS :

- **Rated line pull** : 5,443 kg (12,000 lb)
- **Motor** : 3,430 w / 4.6 hp 12V series wound  
2,240 w / 3.0 hp 24V series wound
- **Gear ratio** : 2-stage spur gear PLUS worm gear 424:1
- **Clutch (freespooling)** : Mechanism lever
- **Brake** : Irreversible worm gear brake PLUS mechanism ratchets wheel brake
- **Drum size** : 89 x 229 mm (3.5" x 9")
- **Control** : Waterproof remote w/5 m (17') cord
- **Rope type** : Galvanized aircraft A7 x 19
- **Rope size** : 9.5 mm x 30.5 m (3/8" x 100')
- **Mounting bolts pattern** : 273 x 110 mm (10.7" x 4.3")  
257 x 172 mm (10.1" x 6.8")
- **Winch weight** : 41 kg / 90.4 lb
- **Gross weight** : 51 kg / 112.5 lb
- **Box dimension** : 610 x 427 x 350 mm (24" x 16.8" x 13.8")

### PERFORMANCE DATA :

#### Line Pull and Rope Capacity

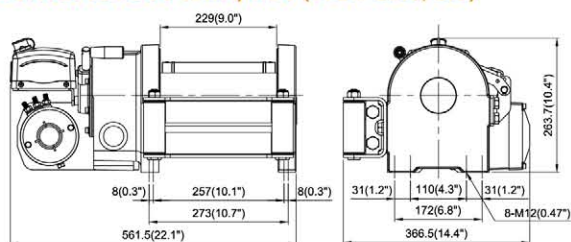
Layer of Wire Rope	Pull by Layer, kg / lb	Total Rope on the Drum, m / ft
1 <sup>st</sup>	5,443 / 12,000	7.3 / 24.0
2 <sup>nd</sup>	4,563 / 10,060	16.0 / 52.6
3 <sup>rd</sup>	3,928 / 8,659	26.1 / 85.8
4 <sup>th</sup>	3,448 / 7,601	30.5 / 100

#### Line Speed and Amp. Draw

( 1<sup>st</sup> layer of wire rope on the drum )

Line Pull kg / lb	Line Speed mpm / fpm	Amp. Draw, A 12V	24V
No Load	6.3 / 20.3	70	40
2,722 / 6,000	2.7 / 8.9	180	85
3,630 / 8,000	1.7 / 5.6	270	120
4,535 / 10,000	1.4 / 4.6	310	150
5,443 / 12,000	1.0 / 3.3	350	190

### DIMENSION mm/in : (Wolf 12.0/8.5)



## Wolf 8.5 Electric Worm Gear Winch



PN 780254 (12V) | PN 780988 (24V)

### SPECIFICATIONS :

- **Rated line pull** : 3,856 kg (8,500 lb)
- **Motor** : 3,430 w / 4.6 hp 12V series wound  
1,940 w / 2.6 hp 24V series wound
- **Gear ratio** : 2-stage spur gear PLUS worm gear 228.9:1
- **Clutch (freespooling)** : Mechanism lever
- **Brake** : Irreversible worm gear brake PLUS mechanism ratchets wheel brake
- **Drum size** : 82 x 229 mm (3.2" x 9")
- **Control** : Waterproof remote w/5 m (17') cord
- **Rope type** : Galvanized aircraft A7 x 19
- **Rope size** : 8.0 mm x 45 m (5/16" x 150')
- **Mounting bolts pattern** : 273 x 110 mm (10.7" x 4.3")  
257 x 172 mm (10.1" x 6.8")
- **Winch weight** : 40 kg / 88.2 lb
- **Gross weight** : 51 kg / 112.5 lb
- **Box dimension** : 610 x 427 x 350 mm (24" x 16.8" x 13.8")

### PERFORMANCE DATA :

#### Line Pull and Rope Capacity

Layer of Wire Rope	Pull by Layer, kg / lb	Total Rope on the Drum, m / ft
1 <sup>st</sup>	3,856 / 8,500	8.0 / 26.4
2 <sup>nd</sup>	3,279 / 7,229	17.5 / 57.4
3 <sup>rd</sup>	2,853 / 6,289	28.4 / 93.1
4 <sup>th</sup>	2,524 / 5,566	40.7 / 133.4
5 <sup>th</sup>	2,264 / 4,991	45.0 / 150.0

#### Line Speed and Amp. Draw

( 1<sup>st</sup> layer of wire rope on the drum )

Line Pull kg / lb	Line Speed mpm / fpm	Amp. Draw, A 12V	24V
No Load	10.6 / 34.8	55	40
907 / 2,000	4.3 / 14.1	120	70
1,814 / 4,000	3.0 / 9.8	200	100
2,722 / 6,000	2.4 / 7.9	255	130
3,630 / 8,000	2.0 / 6.6	320	160
3,856 / 8,500	1.8 / 5.9	350	170

- Wolf Series meet SAE J706, CE Machinery Directive 2006/42/EC, CE Electromagnetic Compatibility Directive 2001/108/EC

# HEAVY DUTY HOIST

### GTD Series

- Provides an answer to the health and safety recommendations for manual lifting
- High efficient low amp. draw and sealed permanent magnet motor.
- Lightweight and compact design is ideal for easy installation..
- Waterproof industrial remote control with 5 m lead
- Full metal 3 stage planetary gear train for greater pulling force.
- Submersible sealed contactor handles high amps and allows higher duty cycle.
- In compliance with standard of ANSI B30.5 for D/d ≥ 18 and rope safety factor ≥ 3.5
- Meet CE Machinery Directive 2006/42/EC, CE EMC Directive 2004/108/EC and ANSI B30.5



## GTD-1200 Heavy Duty Hoist



PN 751321 (12V) | PN 751375 (24V)

### SPECIFICATIONS :

- **Rated line lift** : 544 kg (1,200 lb)
- **Line speed (at 1<sup>st</sup> layer of rope) :**  
12V : 7.4 mpm / 24.3 fpm 30 A at no load  
5.5 mpm / 18.0 fpm 130 A at full load  
24V : 5.9 mpm / 19.4 fpm 15 A at no load  
5.0 mpm / 16.4 fpm 50 A at full load
- **Motor** : 900 w / 1.2 hp 12/24V permanent magnet
- **Gear ratio** : 3-stage planetary 216:1
- **Brake (outside the drum)** : Mechanical cone brake and permanent motor dynamic brakes together
- **Winch construction** : Aluminum die cast housings and cast iron drum
- **Drum size** : 89 x 73 mm (3.5" x 2.9")
- **Control** : Remote control with 5 m (17') lead
- **Rope type** : Galvanized aircraft A7 x 19
- **Rope size** : 4.8 mm x 18.3 m (3/16" x 60')
- **Mounting bolts pattern** : 114 x 101.6 mm (4.5" x 4")
- **Hoist weight (including rope)** : 15.3 kg / 33.7 lb
- **Gross weight** : 20.2 kg / 44.5 lb
- **Box dimension** : 504 x 214 x 363 mm (19.8" x 8.4" x 14.3")

### PERFORMANCE DATA :

#### Line Pull and Rope Capacity

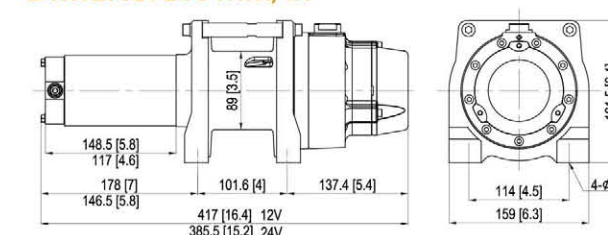
Layer of Wire Rope	Lift by Layer, kg / lb	Line Speed mpm / fpm	Total Rope on the Drum, m / ft
1 <sup>st</sup>	544 / 1,200	5.5 / 18	4.2 / 13.8
2 <sup>nd</sup>	494 / 1,089	6.1 / 19.9	8.8 / 28.9
3 <sup>rd</sup>	452 / 996	6.6 / 21.7	13.8 / 45.3
4 <sup>th</sup>	416 / 917	7.2 / 23.6	18.3 / 60

#### Line Speed and Amp. Draw

( 1<sup>st</sup> layer of wire rope on the drum )

Line Lift kg / lb	Line Speed mpm / fpm 12V	24V	Amp. Draw, A 12V	24V	Percentage Duty Cycle Min / 10 min
No Load	7.4 / 24.3	5.9 / 19.4	30	15	2.5
136 / 300	6.9 / 22.6	5.7 / 18.7	55	19	2.3
212 / 600	6.4 / 21.0	5.5 / 18.0	75	25	2.0
408 / 900	5.9 / 19.4	5.2 / 17.1	95	36	1.8
544 / 1,200	5.5 / 18.0	5.0 / 16.4	130	50	1.5

### DIMENSION mm/in





## GTD-800 Heavy Duty Hoist



PN 750925 (12V) | PN 750955 (24V)

### SPECIFICATIONS :

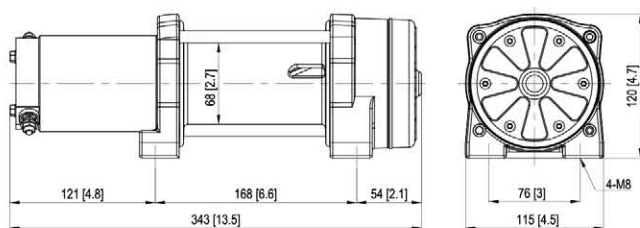
- **Rated line lift** : 362 kg (800 lb)
- **Line speed (at 1<sup>st</sup> layer of rope) :**
  - 12V : 3.6 mpm / 11.8 fpm 20 A at no load  
3.2 mpm / 10.5 fpm 55 A at full load
  - 24V : 4.2 mpm / 13.8 fpm 15 A at no load  
4.0 mpm / 13.1 fpm 35 A at full load
- **Motor** : 800 w / 1.0 hp 12/24V permanent magnet
- **Gear ratio** : 3-stage planetary 191:1
- **Brake (outside the drum)** : Mechanical spring applied and permanent motor dynamic brakes together
- **Winch construction** : Aluminum die housings with and drum
- **Drum size** : 68 x 119 mm (2.7" x 4.7")
- **Control** : Remote control with 5 m (17') lead
- **Rope type** : Galvanized aircraft A7 x 19
- **Rope size** : 4.0 mm x 18.3 m (5/32" x 60')
- **Mounting bolts pattern** : 168 x 76 mm (6.6" x 3")
- **Hoist weight (including rope)** : 8.3 kg / 18.3 lb
- **Gross weight** : 12.2 kg / 26.9 lb
- **Box dimension** : 430 x 170 x 300 mm (16.9" x 6.7" x 11.8")

### PERFORMANCE DATA :

Line Pull and Rope Capacity			
Layer of Wire Rope	Lift by Layer, kg / lb	Line Speed mpm / fpm	Total Rope on the Drum, m / ft
1 <sup>st</sup>	362 / 800	3.2 / 10.5	6.2 / 21.7
2 <sup>nd</sup>	327 / 721	3.6 / 11.8	14.0 / 45.9
3 <sup>rd</sup>	297 / 655	3.9 / 12.8	18.3 / 60

Line Speed and Amp. Draw ( 1 <sup>st</sup> layer of wire rope on the drum )					
Line Lift kg / lb	Line Speed mpm / fpm		Amp. Draw, A		Percentage Duty Cycle Min / 10 min
	12V	24V	12V	24V	
No Load	3.6 / 11.8	4.2 / 13.8	20	15	3.0
181 / 400	3.4 / 11.2	4.1 / 13.5	40	25	2.0
362 / 800	3.2 / 10.5	4.0 / 13.1	55	35	1.5

### DIMENSION mm/in :



## GTD-650 Heavy Duty Hoist



PN 750265 (12V) | PN 750280 (24V)

### SPECIFICATIONS :

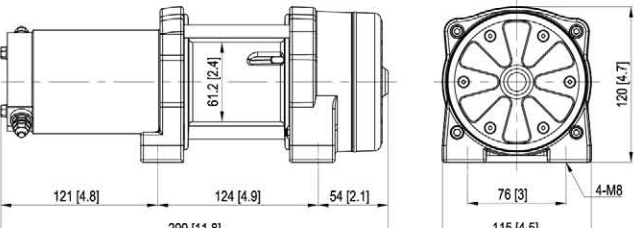
- **Rated line lift** : 295 kg (650 lb)
- **Line speed (at 1<sup>st</sup> layer of rope) :**
  - 12V : 4.3 mpm / 14.1 fpm 25 A at no load  
4.0 mpm / 13.1 fpm 55 A at full load
  - 24V : 5.0 mpm / 16.4 fpm 15 A at no load  
4.6 mpm / 15.1 fpm 30 A at full load
- **Motor** : 800 w / 1.0 hp 12/24V permanent magnet
- **Gear ratio** : 3-stage planetary 138.5:1
- **Brake (outside the drum)** : Mechanical spring applied and permanent motor dynamic brakes together
- **Winch construction** : Aluminum die housings and drum
- **Drum size** : 61.2 x 75 mm (2.4" x 3.0")
- **Control** : Remote control with 5 m (17') lead
- **Rope type** : Galvanized aircraft A7 x 19
- **Rope size** : 3.6 mm x 18.3 m (9/64" x 60')
- **Mounting bolts pattern** : 124 x 76 mm (4.9" x 3")
- **Hoist weight (including rope)** : 7.7 kg / 17 lb
- **Gross weight** : 11.6 kg / 25.6 lb
- **Box dimension** : 390 x 170 x 300 mm (15.4" x 6.7" x 11.8")

### PERFORMANCE DATA :

Line Pull and Rope Capacity			
Layer of Wire Rope	Lift by Layer, kg / lb	Line Speed mpm / fpm	Total Rope on the Drum, m / ft
1 <sup>st</sup>	295 / 650	4.0 / 13.1	4.1 / 13.5
2 <sup>nd</sup>	266 / 586	4.5 / 14.8	8.7 / 28.5
3 <sup>rd</sup>	241 / 531	4.9 / 16	13.8 / 45.3
4 <sup>th</sup>	221 / 487	5.4 / 17.7	18.3 / 60

Line Speed and Amp. Draw ( 1 <sup>st</sup> layer of wire rope on the drum )					
Line Lift kg / lb	Line Speed mpm / fpm		Amp. Draw, A		Percentage Duty Cycle Min / 10 min
	12V	24V	12V	24V	
No Load	4.3 / 14.1	5.0 / 16.4	25	15	3.0
147 / 320	4.2 / 13.8	4.8 / 15.7	45	22	2.0
295 / 650	4.0 / 13.1	4.6 / 15.1	55	30	1.5

### DIMENSION mm/in :



### Remote Control

PN 880025 for GTD-650/800/1200, Wolf 8.5/12.0

PN 880126 for Rhino 8/12 (coming with protective thermal sensor LED)

### Sealed Contactor

PN 881355 (12V) / PN 881356 (24V)

400A, for Wolf 8.5/12.0, Rhino 8/12

PN 881357 (12V) / PN 881358 (24V)

250A, for GTD-650/800/1200

### Detachable Control Box

PN 882313 (12V) / PN 882314 (24V)

for GTD-650/800/1200

PN 880340 (12V) / PN 880341 (24V) for Wolf 8.5/12.0

PN 881581 (12V) / PN 881582 (24V) for Rhino 8

(comes with built-in over-load protector)

PN 881645 (12V) / PN 881646 (24V) for Rhino 12

(comes with built-in over-load protector)

### Roller Fairlead

PN 880160 179 mm throat for HV-8 Std. drum,

Bison 20/30 Std. drum

PN 880180 245 mm throat for HV-8 Long drum,

HV-10/12/15

PN 880023 210 mm throat for Wolf 8.5/12.0

PN 881587 210 mm throat for Rhino 8/12

PN 881479 149 mm throat for Yak 5/7 Std. drum

PN 881480 229 mm throat for Yak 5/7 Long drum

PN 882238 330 mm throat for Bison 20/30 Long drum

### Snatch Block

PN 881079 Max. load 10,000 kg / 22,000 lb for for GTD-650/800/1200, Yak 5/7

PN 881082 Max. load 13,610 kg / 30,000 lb for

HV-8/10/12, Wolf 8.5/12.0, Rhino 8/12

### Wire Rope with hook

PN 881245 4.8 mm x 18.3 m (3/16"

x 60') for GTD-1200

PN 882321 4.0 mm x 18.3 m (5/32"

x 60') for GTD-800

PN 882323 3.6 mm x 18.3 m (9/64"

x 60') for GTD-650

PN 881239 8.0 mm x 45 m (5/16" x 150') for Wolf 8.5

PN 880106 9.5 mm x 30.5 m (3/8" x 100') for Wolf 12.0

### Battery Isolation Switch PN 881097

2 Position Off-On 12V 500 Amp for Wolf 8.5/12.0,

GTD-650/800/1200, Rhino 8/12

### Cable Tensioner

PN 881238 for HV-8 Std. drum, Rhino 12

PN 880179 for HV-8 Long drum, HV-10/12/15

PN 881667 for Rhino 8

PN 881983 for Bison 20/30 Std. drum

PN 882195 for Bison 20/30 Long drum

PN 880358 for Wolf 8.5/12.0

PN 881236 for Yak 5/7 Std. drum

PN 881237 for Yak 5/7 Long drum

### Air Clutch

PN 880181 for HV-8/10

PN 882352 for HV-12/15

### Extended Clutch Kit

PN 881314 for HV-8/10/12/15

### Over Center Valve

PN 880145 70-210 bar setting

for HV-8/10/12/15

### Winch Accessory Kit

#### Heavy Duty Kit

Part Number: PN 882068 for HV-8/10/12, Wolf 8.5/12.0, Rhino 8/12, Yak 5/7

Designed for winch single line capacity to 6,803 kg / 15,000 lb

Includes:

- 13,610 kg / 30,000 lb maximum capacity snatch block, PN 881082
- 100 mm x 2.4 m (4" x 8') tree trunk protector strap, PN 881091
- 75 mm x 9 m (3" x 30') recovery strap rated to 9,800 kg/21,600 lb, PN 881090
- Bow shackle, 20 mm (3/4") pin diameter, PN 881092
- 3 m of 8 mm (10' of 5/16") grade 70 choker chain with hooks, PN 881096
- Recovery damper, PN 881557
- Leather gloves, PN 881558
- Duffel bag, PN 881661



Emergency Stop Switch, PN 881668 400A



## Industrial Winch Accessories Chart

Series		Hydraulic Recovery Winch							
Model Number		Bison 30	Bison 20	HV-15	HV-12	HV-10	HV-8	Yak 7	Yak 5
Gear train		Planetary gears						Worm gears	
Rated line pull	SAE J706 rating	13,600 kg / 30,000 lb	9,070 kg / 20,000 lb	6,800 kg / 15,000 lb	5,440 kg / 12,000 lb	4,535 kg / 10,000 lb	3,630 kg / 8,000 lb	3,175 kg / 7,000 lb	2,268 kg / 5,000 lb
	EN 14492-1 rating	-	9,070 kg	6,800 kg	5,100 kg	4,300 kg	3,560 kg	3,200 kg	2,200 kg
Over center valve		●	●	●	●	●	●	●	●
Roller fairlead	for Std. drum	●	●	●	●	●	●	●	●
	for Long drum	●	●	-	-	-	●	●	●
Cable tensioner	for Std. drum	●	●	◎	◎	◎	◎	◎	◎
	for Long drum	●	●	-	-	-	◎	◎	◎
Air clutch		-	-	◎	◎	◎	◎	-	-
Snatch block		-	-	-	◎	◎	◎	◎	◎

Series		Electric recovery Winch				Heavy Duty Hoist		
Model Number		Rhino 12	Rhino 8	Wolf 12.0	Wolf 8.5	GTD-1200	GTD-800	GTD-650
Gear train		Planetary gears		Worm gears		Planetary gears		
Rated line pull or lift	SAE J706 rating	5,440 kg / 12,000 lb	3,630 kg / 8,000 lb	5,443 kg / 12,000 lb	3,856 kg / 8,500 lb	544 kg / 1,200 lb	362 kg / 800 lb	295 kg / 650 lb
	EN 14492-1 rating	5,100 kg	3,560 kg	-	-	-	-	-
Remote control		●	●	●	●	●	●	●
Control box	12V	●	●	●	●	●	●	●
	24V	●	●	●	●	●	●	●
Wire rope w/hook		◎	◎	●	●	●	●	●
Roller fairlead		●	●	●	●	-	-	-
Battery lead		●	●	●	●	●	●	●
Cable tensioner		◎	◎	●	●	-	-	-
Snatch block		◎	◎	◎	◎	◎	◎	◎

● Means as a standard accessory / ◎ Means as an option accessory

